




RANGER_{RX} Q

QUADRA 
ASYMMETRIC

Outdoor Flash System



The Ranger Quadra RX Asymmetric is a lightweight compact portable 400ws battery flash system. This is a perfect system for anyone who shoots in the studio, outdoors and in places where there is no electricity. The Ranger Quadra RX Asymmetric offers "Action Freezing" flash duration with speedy recycle times and wireless power control, flash triggering and modelling light control.

Features

The Ranger Quadra offers many additional features:

EL-SKYPOR (built-in)

Remote power control, **power settings**, **flash triggering** and **modeling light on/off** control right from the top of your camera.

POWER OPTIONS

Two outlets – 2 : 1 ratio.
Single high power channel and a single superfast flash channel.

BATTERY

Recharges from full in 2 hours and to 80% power in 1 hour. Car charger available.

MODELING LIGHT

Programmable cool running small efficient daylight balanced LED modeling light.

INTELLIGENT SLAVE CELL

Eye-Cell auto pre-flash detection allows Quadra RX Asymmetric to be mixed with tilt-head TTL flashes by allowing them to learn the number of pre-flashes and not fire until the last one. Standard manual setting option also available.

RANGER QUADRA HEADS

- Compact, lightweight.
- User replaceable plug-in flashtube.
- Interchangeable cables.
- RQ A Speed Head version for "Action Freezing" photography (RQ A Head connected to the superfast channel B - 1/6000 s).
- RQ S Head portraiture, event, architectural and all studio photography. (RQ S Head connected to the superfast channel B - 1/3200 s).



Accessories



Ranger Quadra rx Accessories

For more detailed Information and NEWS, visit www.elinchrom.com

RQ Ringflash n° EL 20495

The ultimate combination for "In" and "Out" door photography! RQ Ringflash, complete with 4-pole flashtube, freezes movement with a 1/2600 s (t0.5) @ full power. 78.8" flash cable enables photographers to use it freehand (with the battery pack shouldered or in a backpack).



**RQ A Plug-In Flashtube
n° EL 24000**
High quality "long-life" A-Type (action) flashtube for RQ A Heads.

**RQ S Plug-In Flashtube
n° EL 24009**
High quality "long-life" S-Type (standard) flashtube for RQ S Heads.



**RQ Extension Cable
(straight ends)
16.4' / EL 11003
32.8' / EL 11004**

NOTE: Cable extensions reduce the flash power and they slow down the flash duration



**RQ Flashhead Cable
(right angle ends)**

**5' / EL 11000
8' / EL 11001 (standard cable)
11' / EL 11002**



**RQ Adapter Cable for
Ranger S/A Heads
n° EL 11036**

Adapts Flashheads from the Ranger RX System



**RQ Adapter Cable EL
n° EL 11097**

Adapts EL Flashheads to RQ packs.



**RQ Battery
12 V / 3.6 Ah**

n° EL 19294
The replacement or spare Gel-Electrolyte Battery is rock solid and offers up to 150 flashes at full power. No Memory Effect.



**RQ Multi-voltage Charger
n° EL 19284**

Includes mains adaptors for EURO, UK and USA.



**RQ Car Charger
n° EL 11093**

Charges the RQ Battery from the 12 V car outlets.



**Shoulder Strap
n° EL 19287**

Air cushioned Shoulder Strap, adjustable, made of non-slip fabrics.



**RQ Snappy
n° EL 19286**

Offers carrying comfort and protection; the Snappy requires the Shoulder Strap.



**RQ Case
n°33214**

The small size, robust RQ Case (22" x 16.5" x 5.7") carries safely 1x pack, 2x batteries, 2x heads with cables and 5.3" reflectors. The ideal car trunk set for on location and outdoor use.



**RQ A Speed Flashhead
n° EL 20110**

Ultra lightweight and compact with detachable flash cable; plug-in SPEED flashtube and LED modeling light, for "Action Freezing" photography with ultra short flash duration.



**RQ S Flashhead
n° EL 20107**

Ultra lightweight and compact with detachable flash cable; plug-in flashtube and LED pilot light, for universal outdoor photography.



**EL Skyport
Transmitter ECO
n° EL 19349**

Flash trigger, speed sync function and 4 frequency channels.



**EL Skyport Transmitter Speed
n° EL 19350**

Remote control for flash power and LED modeling light, flash trigger, speed sync function, 4 Groups and 8 frequency channels.



**RQ-EL Reflector Adapter
n° EL 26339**

This adapter is required, to use the wide range of Elinchrom Reflectors, Accessories, Rotalux softboxes up to 39" or the Indirect EL-Light Banks up to 74.8".

**RQ Multifunction Cap
n° EL 25100**

Three in one: Protection for LED and flash tube / frost diffusion filter / the filter support accepts colored gel filters. The cap fits to the standard RQ 5.3" reflector.



**RQ Reflector 70° - 5.3"
n° EL 26145**

This standard reflector is part of single heads and sets and offers a wide-angle light distribution as standalone or umbrella reflector.



**RQ Portalite 15.75" x 15.75"
n° EL 26151**

The RQ softbox is easy to set up and ultra transportable. The small size softbox offers a wide soft light when used with the outer diffuser.



**RQ Reflector 56° - 7.25"
n° EL 26056**

The internal recess accepts 7.25" push in Grids and supports umbrellas. The universal reflector combines a high output with a good spread of light.



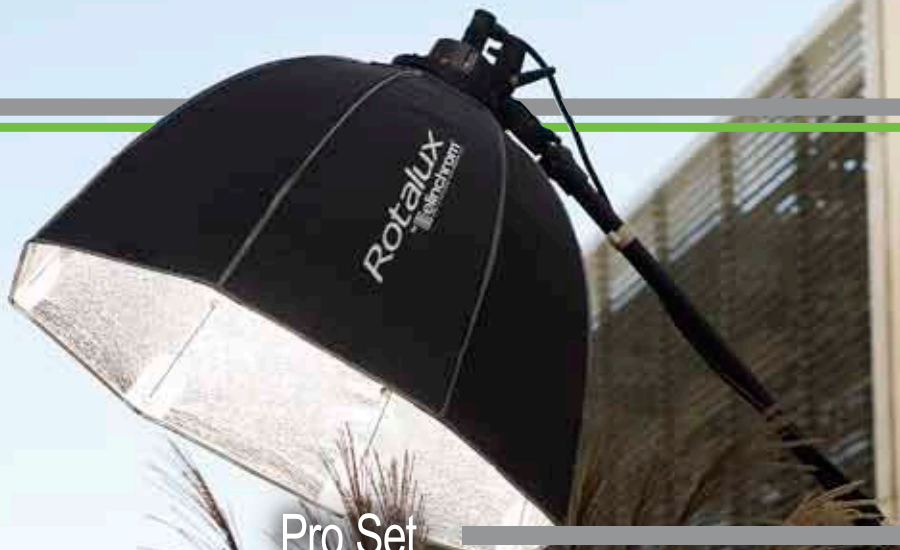
**RQ Portalite Octa 22"
n° EL 26600**

What makes Elinchrom softboxes unique are the optional sets of deflectors – gold, silver and translucent that enable the softness / hardness and color to be modified. The perfect light source for beauty and portraiture.



To Go Sets

Elinchrom Skyport 3.0 software manages remote power, flash power consistency, LED modelling lamp and even more RX features than are currently available on any other Elinchrom RX flash unit.



Pro Set

Ranger Quadra - ProSet - A Heads EL 10291 *
Ranger Quadra - ProSet - S Heads EL 10290 **

Q

1



Ranger Quadra RX Asymmetric

2



RQ A or S Flashheads (*/**)
+ RQ Reflector 5.3"

2



Multifunction Cap
(without Reflector)

2



RQ Flashhead Cable 8'

1



RQ Case

1



RQ Spare Battery

1



El-Skyport
Transmitter Speed

Standard Set

Ranger Quadra - Standard Set - A Heads EL 10293 *
Ranger Quadra - Standard Set - S Heads EL 10292 **

Q

1



Ranger Quadra RX Asymmetric

1



RQ A or S Flashhead (*/**)
+ RQ Reflector 5.3"

1



Multifunction Cap
(without Reflector)

1



RQ Flashhead Cable 8'

Ranger Quadra
Standard Set



* A / Action - Heads for "Action Freezing" photography!

** S / Standard - Heads for universal use!

***Set configurations may change, for latest Sets visit www.elinchrom.us

! All Sets come with Shoulder Strap, Multivoltage Charger and Manuals

Ranger Quadra
Pro Set

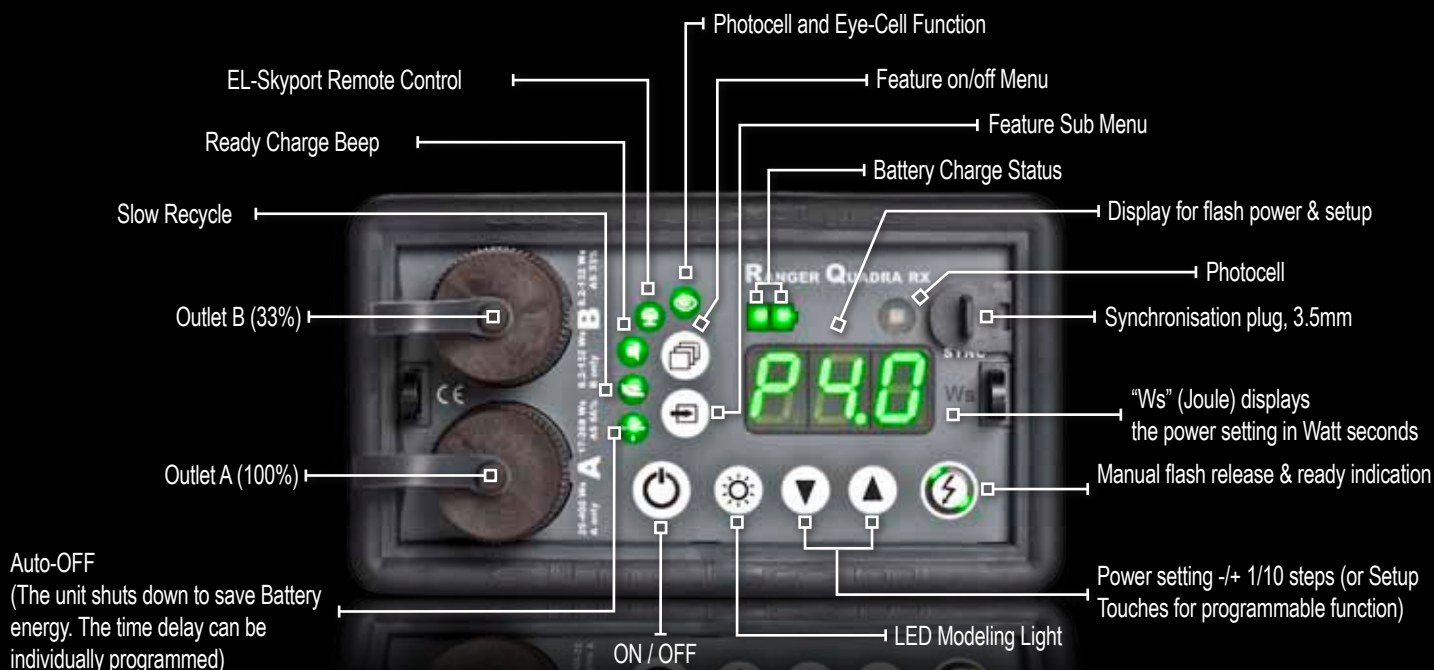


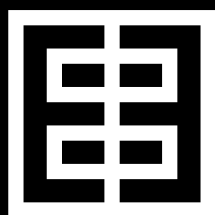
Technical Data

Flash power	J(Ws)	400
F-stop, 1m, 100 ISO, with reflector 48°	-	64.5
Power range	J(Ws)	100% A Output: 25 – 400 // 33% B Output: 8.2-133
Variable flash power	f-stops	6.6 f-stops / 8.2 - 400 Ws
Recycling, 100% FAST @ min. / max. power (A or A+B Output)	s	0.35 / 2.2 s
Recycling, 100% SLOW @ min. / max. power (A or A+B Output)	s	0.8 / 6 s
Recycling, 33% @ FAST min. / max. power (B Output only)	s	0.2 / 0.8 s
Recycling, 33% @ SLOW min. / max. power (B Output only)	s	0.35 / 2.3 s
Flash duration (t 0,5) RQ Head S / A, max. power:	s	A Output (100%) 1/1200 // 1/2800 B Output (33%) 1/3000 // 1/5700 A+B Output (100%) 1/1500 // 1/4000
Color temperature 1/1 power (Output A / B)	°K	5560
Flashes out of one charged battery @ min. power, SLOW / FAST recycle	-	2000 / 1500
Flashes out of one charged battery @ max. power, SLOW / FAST recycle	-	150 / 110
Voltage stabilization	f-stops	0.05
Sync voltage	V	5 V
Battery (gel-electrolyte)	-	12 V / 3.6 Ah
Modeling light: LED		20 W (approx. 50 W Halogen)
Quick charger: recharging time	h	2 h to full charge, 1h to 80% charge
EL-Skyport interface	-	Integrated transceiver module, 4 groups - 8 frequencies, RX computer remote control, wireless firmware update
Dimensions: Ranger Quadra power pack including battery // Head (without tilt bracket)	inches	Ø 5.9 x 3.3 x 8.3 // 3.5 x 3.2 x 4.3
Weight: Ranger Quadra unit including battery // battery box // Head // head cable (8')	lbs.	Ø 6.6 // 3.5 // 0.55 // 0.9
Code number:	N°	
Ranger Quadra, Battery Box, Sync Cord, Charger, Shoulder Strap		EL 10261.1
Ranger Quadra A / S Head, 8' Flash Cable, Reflector 5.3", Multifunction Cap		S Head - EL 20107 // A Head - EL 20110
Ranger Quadra Spare Battery Box		EL 19294

* Tolerances of specifications and components conform to IEC and CE standards.
Technical data subject to change. No guarantee for misprints.
The listed values can differ due to tolerances in components, or measuring instruments.

Control Panel





elinchrom[®]
creative image lighting technology 



Quadra

catch your image

ANYWHERE

72047 EN Ranger Quadra

#14 - 06/2010

www.elinchrom.com switzerland 2010
www.elinchrom.us