



The

Light

Ahead

Elinchrom Flash System

English

The Light Ahead

Contents

Compacts	Starters – D-Lite-it	2
	Entry Professional – BXRi	4
	Professional – Style RX	6
Power Packs	Digital RX & AS	9
	Digital RX & AS – Flashheads	10
Battery Flash System	Ranger Quadra RX	13
	Ranger RX	16
Radio Remote System	EL – Skyport	22
Continuous Light	ScanLite	28
	MiniLite	29
Accessories	Rotalux Softbox	32
	Special Effect Lights	35
	Indirect Softlites	36
	Reflector & Grids	38
	Reflector & Filter	39
	Umbrellas	40
	Tripods	42
	Tripods & Bags	43
	Cases & Tables	44
	Sync Cords	45
Power Specifications	Last but not Least	48

Please read carefully the notes about this catalogue!

This brochure may show images of products with accessories, which are not part of Sets or single units. Elinchrom Set and single unit configurations may change without advise and they might be different in other countries. Actual configurations please find at www.elinchrom.com

For further details, upgrades, news, the latest information about the Elinchrom System, please visit frequently the Elinchrom website. In the Support area, the latest user guides and technical specifications can be downloaded. Technical data, features and functions of Elinchrom flash units and the EL-Skyport system may change without advise.

Tolerances of specifications and components conform to IEC and CE standards. The listed values can differ due to tolerances in components, or measuring instruments. Technical data, subject to change.

No guarantee for misprints.

The conception and photography of the Beauty & Fashion images in this brochure are from Anoush Abrar & Aimée Hoving www.anoushaimee.com

Compacts



D-Lite-it

The D-Lite-it studio flash system is the entry range into the Elinchrom studio flash family.

Ideal for small business applications, portraiture, for anyone interested in the art and creativity of lighting, these Swiss designed and tested units will not only give many years of satisfactory service and pleasure, but allow the upgrading to more advanced units as necessary. This is «it»... The Best «D-Lite-it» Ever.

What's New

- EL-Skyport Receiver built-in for triggering, Frequency Channel settings and Speed Sync mode.
- EL-Skyport with 4 Frequency Channels, compatible with the ELS Transmitter and ECO Transmitter.
- EL-Skyport with 4 Groups, available with the EL-Skyport Transmitter and Transmitter Speed.
- EL-Skyport Speed Sync Mode, for fast SLR camera synchronisation up to 1/250 s, compatible with the ECO and Transmitter Speed.
- Red Eye pre-flash management system, plus programmable modes.
- Power Auto-Dump.
- Automatic temperature controlled ventilation.
- Multivoltage auto-detection, 90-270 V (excluding modelling lamp).
- New housing re-design, robust, function and elegance in one go.
- New reflector bayonet with speed locking, accepts Rotalux softboxes up to 135 cm.
- New larger, rubberised handle with spare fuse storage.
- New pro stand bracket with extra umbrella fitting for larger umbrella shafts.



D-Lite-it 2 | 200 Ws | code N° 20483.1



D-Lite-it 4 | 400 Ws | code N° 20484.1





D-Lite-it 2 To Go

code N° 20804.2

Qty	Code n°	Article
2x	20483.1	D-Lite-it 2 / 200 Ws, mains cable, flashtube, modelling lamp
1x	19349	EL-Skyport Transmitter ECO
1x	11088	Sync cable 5 m
2x	26124	Protective cap
1x	26143	Reflector 16 cm / 90°
2x	26129	Softbox 66 x 66 cm incl. protection bag
1x	33198	Carrying bag for two D-Lite-it
1x	30162	Stand Set / Carrying bag & two stands 88 – 235 cm

D-Lite-it 4 To Go

code N° 20805.2

Qty	Code n°	Article
2x	20484.1	D-Lite-it 4 / 400 Ws, mains cable, flashtube, modelling lamp
1x	19349	EL-Skyport Transmitter ECO
1x	11088	Sync cable 5 m
2x	26124	Protective cap
1x	26143	Reflector 16 cm / 90°
2x	26129	Softbox 66 x 66 cm incl. protection bag
1x	33198	Carrying bag for two D-Lite-it
1x	30162	Stand Set / Carrying bag & two stands 88 – 235 cm



D-Lite-it 2/4 To Go

code N° 20803.2

Qty	Code n°	Article
1x	20484.1	D-Lite-it 4 / 400 Ws, mains cable, flashtube, modelling lamp
1x	20483.1	D-Lite-it 2 / 200 Ws, mains cable, flashtube, modelling lamp
1x	19349	EL-Skyport Transmitter ECO
1x	11088	Sync cable 5 m
2x	26124	Protective cap
2x	26143	Reflector 16 cm / 90°
1x	33198	Carrying bag for two D-Lite-it
1x	20564	Stand-Umbrella Set / Umbrella translucent & silver 83 cm

EL-Skyport Transmitter ECO included!

BXRi

The BXRi compact flash units are a further evolution of the features and quality that are Elinchrom.

The concept is simple. Control, power, speed and versatility – with many new programmable features and the EL-Skyport remote system, enabling the photographer the greatest freedom to express his or her individuality.



BXRi 250 | 250Ws | code N° 20460.1



BXRi 500 | 500Ws | code N° 20461.1

- EL-Skyport Receiver built-in for radio remote control of flash power settings, modelling lamp on/off, Speed Sync mode and flash trigger.
- EL-Skyport with 8 Frequency Channels, compatible with the ELS Transmitter Speed and ECO Transmitter (4 Frequency Channels).
- EL-Skyport with 4 Groups, available with the EL-Skyport Transmitter Speed and previous ELS Transmitter versions.
- Red Eye pre-flash management system, plus programmable modes.
- EL-Skyport Speed Sync Mode, for fast SLR camera synchronisation up to 1/250s, compatible with the ECO and Transmitter Speed.
- Power Auto-Dump.
- Automatic temperature controlled ventilation.
- VFC, Visual flash confirmation option.
- PLS, proportionality adjustment of the modelling lamp range.
- VSS, Variable f-stop steps.
- Speed flash tube for sharper images.
- High impact resistant body shell.
- Rubberised handgrip with built in fuse storage.
- Multivoltage auto-detection, 90-270 V (excluding modelling lamp).
- Programmable ready beep function.



* The touches on this display are multifunctional to program / scroll the advanced features and to set up the integrated EL-Skyport Transceiver.



BX Ri 250/250 To Go

code N° 20753.2

Qty	Code n°	Article
2x	20460.1	BX Ri 250, mains cable, flashtube, modelling lamp
1x	19350	EL-Skyport Transmitter Speed
2x	11088	Sync cable 5 m
2x	26124	Protective Hood
2x	26129	Portalite softbox 66 x 66 cm
1x	33199	Tube Bag / for 2 BX-Ri

Optional Stand Set To Go

1x	30162	Stand Set / Carrying bag & two stands 88 – 235 cm
----	-------	---

BX Ri 500/500 To Go

code N° 20751.2

Qty	Code n°	Article
2x	20461.1	BX Ri 500, mains cable, flashtube, modelling lamp
1x	19350	EL-Skyport Transmitter Speed
2x	11088	Sync cable 5 m
2x	26124	Protective Hood
2x	26129	Portalite softbox 66 x 66 cm
1x	33199	Tube Bag / for 2 BX-Ri

Optional Stand Set To Go

1x	30162	Stand Set / Carrying bag & two stands 88 – 235 cm
----	-------	---



BX Ri 250/500 To Go

code N° 20752.2

Qty	Code n°	Article
1x	20460.1	BX Ri 250, mains cable, flashtube, modelling lamp
1x	20461.1	BX Ri 500, mains cable, flashtube, modelling lamp
1x	19350	EL-Skyport Transmitter Speed
2x	11088	Sync cable 5 m
2x	26124	Protective Hood
2x	26129	Portalite softbox 66 x 66 cm
1x	33199	Tube Bag / for 2 BX-Ri

Optional Stand Set To Go

1	30162	Stand Set / Carrying bag & two stands 88 – 235 cm
---	-------	---



EL-Skyport Transmitter Speed included! All BX Ri flash units offer radio trigger and remote control options with the built-in EL-Skyport Receiver and Transmitter system. Each Set contains two BX Ri multivoltage flash units one EL-Skyport Transmitter Speed and two Portalite 66x66 cm softboxes. The EL- standard bayonet with security breech lock accepts all Elinchrom accessories and reflectors. Elinchrom offers many powerful accessories for individual lighting. The Stand Set is optional and contains two stands 88-235 cm and the carrying bag, which comes in a separate box.

Style RX

Style RX 300 / 600 / 1200 is professional digital performance Made in Switzerland. Precise repeatability with ultra stable electronics controlled by large digital displays. Elinchrom performance characteristics now exceed the most demanding criteria. The range of Style RX units, with power variation from 1200 Ws to 9 Ws, offer optional digital 2-way remote control and provide the possibility to interface with MAC™ and WIN™ workstations, combining seamlessly with the Digital RX power packs, the Ranger RX Battery system and the latest Quadra RX battery unit.



EL-Skyport 3.0
Compatible

Style RX Facts

- Super Fast Recycling.
- Action Freezing.
- Unique EL-Skyport Remote Options.
- Set flash power and modelling light with the EL-Skyport Transmitter Speed.
- Remote you're complete RX Studio with the EL-Skyport Computer Remote System...
- Control extra features like flash counter or flash delay for strobing effects.
- Full compatible with Digital RX 1200 / 2400 ws power packs and Ranger / Quadra RX battery units.

Features

- Interface for MAC™ and WIN™ workstations. Control 1, 2, 3 or 4 studios each with 16 units, with EL-Skyport.
- EL-Skyport, radio remote control and triggering! Set flash power and switch on/off the modelling lamp with the ELS Transmitter Speed, or control and set all features with MAC™ and WIN™ computer.
- Ultra consistent performance, for every digital application (multi and single shot digital imaging).
- Rapid re-cycling times, maintaining stability.
- Action freezing flash durations at full power Style RX 300-1/2850 s; RX 600-1/2050 s; RX 1200-1/1450 s / t=0.5.
- Low 5 V sync voltage protects digital camera systems.
- Optional cable remote control with large digital LED feedback display of all functions!
- Dark grey, fire retardant, robust body shell encasing the die cast alloy chassis.
- Lightweight elegance for easy "out of studio use".
- Integral reflector, designed to maximise power efficiency combined with our plug-in omega flashtube precisely positioned avoids the inherent uneven illumination produced by non-concentric or U-shaped flash tubes.

Style RX 300

230 V | code N° 20625

110 V | code N° 20725

Style RX 600

230 V | code N° 20626

110 V | code N° 20726

Style RX 1200

230 V | code N° 20627

110 V | code N° 20727

RX Hand Remote Control

code N° 19342



Style RX power and control with the EL-Skyport Radio Remote System



EL-Skyport 3.0
Compatible

Style RX 300 / 600 Compact Set with EL-Skyport

230V | Set code N° 20629.2 – 110V | Set code N° 20729.2

Qty	230 V	110 V	Article
1x	20625	20725	Style RX 300, includes mains cable, modelling lamp, flash tube, sync cable 5 m
1x	20626	20726	Style RX 600, includes mains cable, modelling lamp, flash tube, sync cable 5 m
1x	19358	19358	EL Skyport Remote and Trigger Set, controls flash power, modelling lamp on/of and trigger

Style RX 600 / 600 Compact Set with EL-Skyport

230V | Set code N° 20628.2 – 110V | Set code N° 20728.2

Qty	230 V	110 V	Article
2x	20626	20726	Style RX 600, includes mains cable, modelling lamp, flash tube, sync cable 5 m
1x	19358	19358	EL Skyport Remote and Trigger Set, controls flash power, modelling lamp on/of and trigger

Style RX 1200 / 1200 Compact Set with EL-Skyport

230V | Set code N° 20655.2 – 110V | Set code N° 20755.2

Qty	230 V	110 V	Article
2x	20627	20727	Style RX 1200, includes mains cable, modelling lamp, flash tube, sync cable 5 m
1x	19358	19358	EL Skyport Remote and Trigger Set, controls flash power, modelling lamp on/of and trigger



Style RX comfort sets with carrying case and accessories

Qty	230 V	110 V	Article
1x	20643	20743	Style RX 300 / 300 Case Set
1x	20644	20744	Style RX 600 / 600 Case Set
1x	20645	20745	Style RX 1200 / 1200 Case Set

Included set accessories:

Qty	Code n°	Article
2x	26143	Reflectors 90° 16 cm
1x	26061	Snoot & Grid
1x	26129	Portalite 66 x 66 cm
1x	33209	Elinchrom carrying case for three compacts or heads
1x	20564	Umbrella Stand Set, includes 2x EL-Tripods 88 – 235 cm, 1x silver umbrella 83 cm, 1x translucent umbrella, 1x carrying bag



Power Packs



Digital RX

Elinchrom has a long tradition of excellent power pack designs for professional imaging. The latest Digital RX series incorporates electronic know how combined with high manufacturing quality at affordable prices. Highlights like computer interface, ultra stable circuitry for consistent flash power and low sync voltage to protect digital cameras are just some of many advantages.



EL-Skyport 3.0
Compatible

Digital RX Facts

- Interface for MAC™ and WIN™ workstations. Control 1, 2, 3 or 4 studios each with 16 units, with EL-Skyport.
- Ultra stable circuitry for absolutely consistent flash power.
- Unique dedicated Digital S flashheads for QTVR and 4-shot durability and stability.
- Budget priced Digital SE, SEE flashheads for single shot use.
- High Speed A - and regular S heads available for fashion and general purpose photography.
- Precise digital power display to complement advanced technology.
- Digital power values compatible with the Elinchrom system.
- Modelling lamps proportional or independent, with display.
- Fast recycling consistent with precision and stability.
- Remote control (optional), 2-way with read out. Extension cables available for tracking / wall installations.
- Surge resistant circuits, Auto Dump Function, twin sync sockets, ready beep, sensitive photocell, anti shock edgings, fan cooled.
- EL-Skyport, wireless control and triggering! Set flash power and switch on/off the modelling lamp with the Transmitter, or control and set all features with MAC™ or WIN™ computer.

Digital 1200 RX

230 V code N° 10256
110 V code N° 10255

Digital 2400 RX

230 V code N° 10258
110 V code N° 10257

**RX Hand
Remote Control**
code N° 19342



Digital AS

The super stabilised Digital AS line for single and multi-shot digital photography with user friendly total power asymmetry allow 57 (power variation options) in 1/10 f-stop on each head and permit hundreds of 2 head or 3 head power combinations. Maximum total power is always available as the microprocessor compensates for each and every modification.

Digital 1500 AS

230 V code N° 10248
110 V code N° 10247

Digital 3000 AS

230 V code N° 10254
110 V code N° 10253

**IR Hand
Remote Control**
code N° 19319



Digital AS Facts

- Total power asymmetry, each head accepts different power settings.
- Large green LED power displays.
- Charge speed selectors, rapid, speed, normal.
- Full modelling lamp control with soft start function to increase lamp life.
- Initial charge control, when the pack has not been recently used, to reform capacitors it will charge slow.
- 8 channel infrared remote control.
- Surge resistant circuits, Auto Dump Function, twin sync sockets, ready beep, sensitive photocell, anti shock edgings, fan cooled.

Digital Flashheads For Elinchrom Power Packs

Digital Flashheads Facts

- Efficient built-in reflector, with a 90° light distribution to maximise softbox performance.
- Small flashtube diameters for short flash durations and better subject control. UV coated.
- Extremely lightweight, only 2.4 kg includes the heavy-duty 5 m cable.
- Reflector-bayonet with breech locking ring, fits a huge range of Elinchrom reflectors and softboxes.
- Aluminium chassis with polyamide fire resistant housing.
- Centred umbrella fitting, with additional umbrella support for larger umbrellas shafts on the stand adapter.
- Efficient, low noise fan cooling.
- Three optional Pyrex domes: transparent, mat and 400°K warm.
- Illuminated, on/off modelling lamp switch. All Heads accepts 300 W halogen modelling lamps except the Mini and R range.
- To ensure the ultimate retention of colour balance, Digital flashheads with advanced specifications will satisfy the most demanding digital applications. Designed to withstand extreme frequency of use, the heavier duty "S" flashtubes minimise changes in light characteristics and output.
- NB. For best digital multi-shot results, flashheads should be of similar type and make. "Do not mix flashheads!"



X 6000 N

230 V code N° 20182
110 V code N° 20183

The flat twin interlocking flashtubes bring a focusable light source to high power users. Cabled into a single 6000 Ws power source, the flash duration is halved. Cabled into two 3000 Ws power sources, faster discharges may be cycled quicker.



Digital SEE

230 V code N° 20172
110 V code N° 20173

This flashhead accepts up to 2400 Ws. The "long life" Swiss made flashtube covers all universal studio use.



Digital SE

230 V code N° 20174
110 V code N° 20175

The Digital SE accepts 3000 Ws and is suitable for standard multi-shot imaging. The heavier duty flashtube has electrodes that are less affected by colour variations with frequent use e.g. normal three or four shot systems.

Digital S

230 V code N° 20150
110 V code N° 20149

This head is top line and offers the ultimate in stability or standard multishot imaging. To resist heat stress, these flashtubes have over sized heavy-duty electrodes complementing and optimising the precision of the Digital RX units.





A 3000 N Speed

230 V code N° 20168

110 V code N° 20167

The A-Head offer a super short flash duration with a single, twin electrode flashtube to ensure even light distribution.

Mini S "Standard Head"

230 V code N° 20106

110 V code N° 20105

Mini A "Action Head"

230 V code N° 20104

110 V code N° 20103

The classical metal housings complement the compact dimensions of the RX power packs. These are not eco-units; all components, flashtubes, fans, power cables conform to the normal Elinchrom standards. The Mini heads are available with „S“ Standard or „A“ Action-Speed flash tubes with E27 modelling lamp socket.



Ringflash 3000

code N° 20494

The RF 3000 is dedicated to Elinchrom power packs discharging up to a maximum of 3000 ws per exposure. To retain ease of handling, the unit has a single 5 m power cable, which reduces weight to approximately 1.9 kg. The universal camera adapter with full adjustments enables any 35 mm or medium format camera to be conveniently fitted. The Ringflash is a unique light source ensuring totally shadow less but concentrated illumination for high contrast or high key lighting. Very popular light source for fashion, beauty, industrial and much advertising photography. To modify the light characteristic into a semi diffuse light source, replace the protection glass filter with the matt glass diffuser code 402.013. To use the RF 3000 with Ranger RX the Ranger adapter cable 11095 is required.



Digital RE

230 V code N° 20170

110 V code N° 20169

This head creates sharp linear shadows and spreads light evenly over a wide area. Excellent for sunlight effects, (windows, Venetian blinds), depth enhancing "oblique" and dynamic shadow effects. The articulated head facilitates precise positioning to any angle. Integral supports for barndoors and filters.



Twin X4

230 V code N° 20180

110 V code N° 20181

Twin cables and flashtubes extend the range of use. Both cables in one unit, halves flash durations. The twin cables plugged into two Digital RX 1200 power units give the power of a Digital RX 2400 with the recharge time of a Digital RX 1200 or the head delivers 4800 Ws maximum power units. An economical Twin-Head for softboxes.



Pyrex Glass Domes

Glass domes are delivered in transparent, as protection and in satin matt to soften shadow edges. The 440° K glass dome gives a warm tone for portraiture or food photography.

Glass Dome Transparent

with fitting set N° 24925

Glass Dome Satin

with fitting set N° 24926

Glass Dome 400°K warm

with fitting set N° 24927

Spare Fitting set N° 620.207 / 3 x


Flashhead Extension Cables

5 m – N° 21040 10 m – N° 21041

Ringflash Glass-Diffuser

code N° 402.013

To modify the light characteristic into a semi diffuse light source, replace the protection glass filter with the matt glass diffuser.

A woman with her hair in a bun is captured mid-jump against a clear blue sky with a few wispy clouds. She is wearing a sleeveless, form-fitting dress with a vibrant green and yellow abstract pattern and a black lace hem. She has several bracelets on both wrists. In her right hand, she holds a small white balloon with green leaf-like patterns. To her right, a large green balloon shaped like a cartoon frog with large eyes is visible, along with another white balloon with green patterns below it.

Battery Flash

Systems

Ranger Quadra RX



EL-Skyport 3.0
Compatible

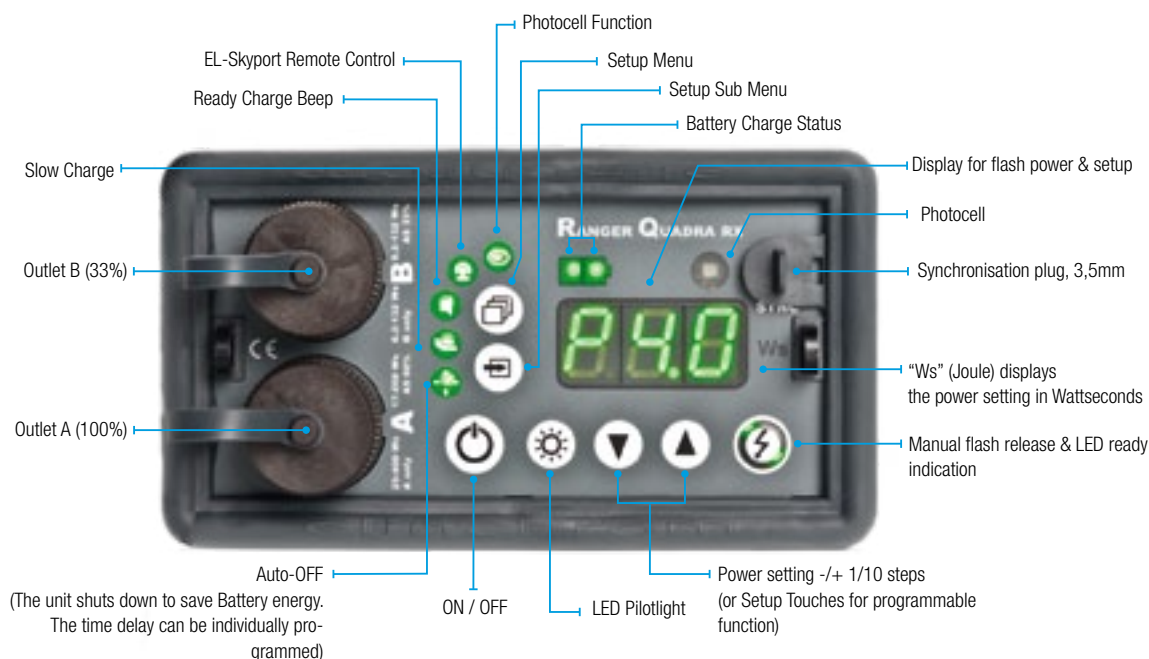
The Ranger Quadra AS is a compact portable 400 Ws battery flash system for studio and outdoors use. A perfect system, for anybody, who like un-plugged (not connected to the mains) photography. The RQ System offers "Action Freezing" flash duration with fast flash recycling time and also wireless trigger and remote options. Our latest firmware manages flash power consistency, remote power variation, LED modelling lamp and even more RX features than are currently available on any other unit.

Features

- EL-SKYPORT (built-in): Radio remote control of power settings and flash triggering.
- POWER OPTIONS: Two outlets – 2:1 ratio, single high power channel, single superfast flash channel.
- BATTERY: Battery power management, included auto power stop. Programmable, cool running, small, efficient LED pilot light.
- INRELLIGENT SLAVE CELL: Red eye pre-flash auto-detect with optional and pre-set effect modes.
- RANGER QUADRA HEADS: Compact, lightweight. Plug-In flashtube. Interchangeable cables. RQ A Speed Head version for "Action Freezing" photography (One RQ A Head connected to the superfast channel B - 1/6000 s).



Ranger Quara RX
code N° 10261.1



Ranger Quadra RX – Accessories

Battery Flash Systems



RQ A Speed Flashhead

code N° 20110

Ultra lightweight and compact with detachable flash cable; plug-in SPEED flashtube and LED pilot light, for ACTION photography with ultra short flash duration.



RQ A Plug-In Flashtube

code N° 24000

High quality "long-life" A -Type (action) flashtube for RQ A Heads.



RQ S Flashhead

code N° 20107

Ultra lightweight and compact with detachable flash cable; plug-in flashtube and LED pilot light, for universal outdoor photography.



RQ S Plug-In Flashtube

code N° 24009

High quality "long-life" S -Type (standard) flashtube for RQ S Heads.



RQ-EL Reflector Adapter

code N° 26339

This adapter is required, to use the wide range of EL-Reflectors, Accessories, Rotalux softboxes up to 100 cm or the Indirect EL-Light Banks up to 190 cm.



RQ Ringflash

code N° 20495

The ultimate combination for "In" and "Out" door photography! RQ Ringflash, complete with 4-pole flashtube, freezes movement with a 1/2600 s (t0.5) at full power. The two metre flash cable enables photographers to use it freehand (with the battery pack shouldered or in a backpack). The 10 cm inner diameter will accept a wide range cameras and lenses.



RQ Ringflash ECO

code N° 20492

This RQ Ringflash accepts up 400 ws with a standard 2-pole flashtube for universal photography. Included is a white diffuser cap and a 2 m detachable flash cable. There are also 1 m, 2 m, 5 m flash cables optional available.



RQ Snappy

code N° 19286

Offers carrying comfort and protection; the Snappy requires the Shoulder Strap.



RQ Car Charger

code N° 11093

Charges the RQ Battery from the 12 V car outlets.



RQ Battery 12 V / 3.6 Ah

code N° 19294

The replacement or spare Gel-Electrolyte Battery is rock solid and offers up to 150 flashes at full power. No Memory Effect.



RQ Multivoltage Charger

code N° 19284

Includes mains adaptors for EURO, UK and USA.



RQ Case

code N° 33214

The small size, robust RQ Case (56 x 42 x 14.5 cm) carries safely 1x pack, 2x batteries, 2x heads with cables and 13.5 cm reflectors.



RQ Flashhead Cable

1.5 m – code N° 11000

2.5 m – code N° 11001

(standard cable)

3.5 m – code N° 11002



RQ Extension Cable & Ringflash ECO

1 m – code N° 11005

2 m – code N° 11006

5 m – code N° 11003

10 m – code N° 11004

NOTE: Cable extensions are reducing the flash power and they slow down the flash duration.



Shoulder Strap

code N° 19287

Air cushioned Shoulder Strap, adjustable, made of non-slip fabrics.



RQ Adapter Cable for Ranger S/A Heads

code N° 11036

Adapts Flashheads from the Ranger RX System.



RQ Adapter Cable EL

code N° 11097

Adapts EL Flashheads to RQ packs.

RQ Portalite 40 x 40 cm

code N° 26151

The RQ softbox is easy to set up and ultra transportable. The small size softbox offers a wide soft light when used with the outer diffuser.



RQ Portalite Octa 56 cm

code N° 26600

What makes Elinchrom softboxes unique are the optional sets of deflectors – gold, silver and translucent that enable the softness / hardness and colour to be modified. The perfect light source for beauty and portraiture.



RQ Reflector 70° - 13.5 cm

code N° 26145

This reflector is part of single heads and sets and offers a wide-angle light distribution as standalone or umbrella reflector.



RQ Multifunction Cap

code N° 25100

Three in one: Protection for LED and flash tube / frost diffusion filter / the filter support accepts coloured gelatine filters. The cap fits to the RQ 13.5 cm reflector.



RQ Reflector 56° - 18 cm

code N° 26056

The internal recess accepts 18 cm push in Grids and supports umbrellas. The universal reflector combines a high output with a good spread of light.



Ranger Quadra Standard Set

A Heads | code N° 10293 *

S Heads | code N° 10292 **

Qty	Code n°	Article
1x	10261.1	Ranger Quadra RX AS
1x	20107 / 20110	RQ S/A Flashhead (*/**)
1x	26145	RQ Reflector 13.5 cm
1x	25100	Multifunction Cap (without reflector)
1x	11001	RQ Flashhead Cable 2.5 m



Ranger Quadra Pro Set

A Heads | code N° 10291 *

S Heads | code N° 10290 **

Qty	Code n°	Article
1x	10261.1	Ranger Quadra RX AS
1x	20107 / 20110	RQ S/A Flashhead (*/**)
1x	26145	RQ Reflector 13.5 cm
1x	25100	Multifunction Cap (without reflector)
1x	11001	RQ Flashhead Cable 2.5 m
1x	33214	RQ Case
1x	19294	RQ Spare Battery
1x	19350	EL-Skyport Transmitter Speed

! All Sets come with Shoulder Strap and Multivoltage Charger

* A / Action - Heads for action freezing photography!

** S / Standard - Heads cover all universal use!

*** Set configurations may change, for latest Sets visit www.elinchrom.com

EL-Skyport Transmitter Speed included!



Ranger RX

The Ranger RX, Speed and Speed AS units are designated RX because they may be operated by remote control – by computer or by a handset – enormously increasing the ease of use on location. The basic unit has an improved “fast” recycling sequence and the Speed unit will recycle to full power in 2.9 seconds plus up to 250 flashes. The Speed unit is available with either 2:1 asymmetrical or symmetrical output. It incorporates the most advanced miniaturised components weighing in at only 8 kg – much lighter and smaller than any comparable unit. The power range is 7 f-stops.



EL-Skyport 3.0
Compatible

Features

- Consistent flash power at any battery level.
- Guide number; all units max. power f-64.1 at 2m distance 100 ISO.
- Charger; Multivoltage with European, USA and UK adapters.
- Battery re-charging - to full power- 3 hours.
- Power saving, auto cut off of modelling lamp and charging.
- Modelling Lamp modes, 15s, 30s & off.
- Photocell, adapted to release in bright ambient light.
- Charge Ready Beep, on/off, with green LED indicator.
- Charge Ready Light / Open Flash, indicated with bright LED!
- Auto Dump Function, adjusts reduced power levels automatically.
- Battery Charge Indicator, two green LED 100%, one green LED 50%, one red LED approx. 10%. The Ranger electronic protects the battery from over and complete discharging. There is no “Memory-Effect”!
- Battery-Box Quick Release, replace batteries in seconds.
- Moisture resistant rubber protectors.
- Raised sockets complete with covers; electronics only in the upper part of the unit.
- EL-Skyport, wireless control and triggering! Set flash power and switch on/off the modelling lamp with the Transmitter Speed, or control and set all features with MAC™ or WIN™ computers.

Ranger RX

code N° 10263

Ranger RX Speed

code N° 10265

Ranger RX Speed AS

code N° 10267

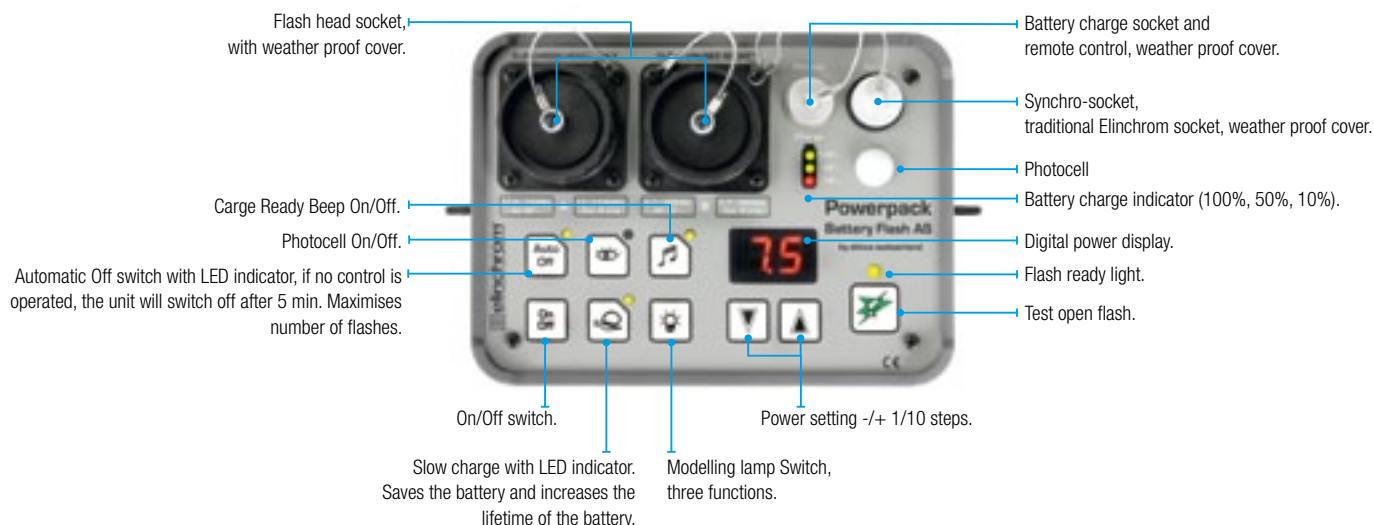
incl. Shoulder Strap,
Battery Box, Sync cord,
Multivoltage Charger &
EL Skyport Adapter.



	Ranger RX	Ranger RX Speed	Ranger RX Speed AS
Quick re-charging to full power	5.5 s	2.9 s	2.9 s
Power range 7 f-stop	1100 Ws – 8.5 Ws		1100 Ws – 5.5 Ws
Remote connection	For optional RX Hand Remote Control / all models		
PC interface	To connect to computers with MAC/Windows operating systems / all models		
Asymmetrical power	Symmetrical	Symmetrical	66% - 33%, two heads connected
Autonomy max. / min. power	140 – 3800	250 - 5100	
Weight	6 kg	8 kg only, smallest unit in this class	

Ranger RX – Accessories

Battery Flash Systems



Accessories for Ranger RX, RX Speed & RX Speed A



Ranger S Head
code N° 20100

For universal use, head with a "long-life" flash tube.



Ranger A Head „Action“
code N° 20101

Unique super short flash duration, with a single, twin electrode flashtube to ensure even light distribution.



Ranger RX Ringflash 1500
code N° 20493

The ultimate combination for "In" and "Out" door photography! Ranger RF 1500, complete with 4-pole flashtube, freezes movement with a 1/2600 s (t0.5) at full power. Two metre flash cable enables photographers to use it freehand (with the battery pack shouldered or in a backpack). The internal Ringflash diameter of 100 mm accepts a wide range of camera lenses.



EL-Power Pack Case
code N° 33215

This case fits Ranger RX and Digital RX power packs and two flashheads.



EL Ranger Snappy
code N° 19288

The Ranger Snappy is a lightweight and easy to fit carrying option with an ergonomically designed shoulder strap. Fits to all Ranger RX models.



Shoulder Strap
code N° 19289

Ranger RX – Accessories

Battery Flash Systems



Ranger RX Hand Remote

code N° 19343

Includes a 1.6 m Ranger RX Remote Cable

The Hand Remote Control enormously increases the flexibility of "Ranger RX" flash units. The integrated highly sensitive photocell and the 3.5 mm sync socket, controls and triggers RX flash units at long distances, in almost all functions. (Slow charge and the head A or B selection for is not available. Only the MAC™ / WIN™ software operates all functions).

For EL-Skyport & Hand Remote

Remote cable 1.6 m | code N° 11106

Remote cable 3.2 m | code N° 11107

Remote cable 6.4 m | code N° 11108

Ranger RX Adapter cable 20 cm | code N° 11110

Ranger A/S Extension Cable

code N° 11096

4 m only for Ranger S and A flashheads.



Car Battery Charger 12V

code N° 11093

This device charges the Ranger RX batteries from any 12 V car accessory plugs.



EL-Skyport Transceiver RX Adapter

code N° 19374

The Remote Adapter is required for the EL-Skyport Transceiver RX.



Ranger Adapter Cable

code N° 11095

Adapts EL standard flashheads to the Ranger RX power packs. (Mains modelling lamp and fan are deactivated.)



Accessories only for Ranger RX



Battery Box

code N° 19290

Includes the battery for approximately 140 flashes at full power.



Multivoltage Quickcharger

code N° 19293

With UK, EURO, USA multi-socket adapters.

Car Battery Supply 12V

code N° 11094

This device connects to any 12 V car battery and replaces the internal Ranger RX battery.

Used with a standard 55 Amp / h car battery, about 600 – 800 full power flashes can be released, depending on the battery condition. Integrated protection circuit against reversed polarity.



Accessories only for Ranger RX Speed & Speed AS



Multivoltage Quickcharger

code N° 19283

Only for Ranger RX Speed & Ranger RX Speed AS.



Battery Box

code N° 19280

Includes the battery for approximately 250 flashes at full power.

Basic Sets

Pro Sets

Ranger RX To Go Action Sets

Qty	Code n°	Ranger RX / A - Head To Go N° 10274	Ranger RX / A - Head To Go Case Set N° 10285
1x	10263	Ranger RX, incl. shoulder strap, battery box sync cord, Multivoltage charger, EL-Skyport Remote Adapter	
1x	20101	Ranger A – Head, 50 W modelling lamp, 3 m flash head cable	
1x		–	see description A below

Qty	Code n°	Ranger RX Speed / A - Head To Go N° 10275	Ranger RX Speed / A - Head To Go Case Set N° 10286
1x	10265	Ranger RX Speed, incl. shoulder strap , battery box sync cord, Multivoltage charger, EL-Skyport Remote Adapter	
1x	20101	Ranger A – Head, 50 W modelling lamp, 3 m flash head cable	
1x		–	see description B below

Qty	Code n°	Ranger RX Speed AS / A - Head To Go N° 10276	Ranger RX Speed AS / A - Head To Go Case Set N° 10287
1x	10267	Ranger RX Speed AS, incl. shoulder strap, battery box sync cord, Multivoltage charger, EL-Skyport Remote Adapter	
1x	20101	Ranger A – Head, 50 W modelling lamp, 3 m flash head cable	
1x		–	see description B below

Ranger RX To Go Standard Sets

Qty	Code n°	Ranger RX / S-Head To Go N° 10271	Ranger RX / S-Head To Go Case Set N° 10280
1x	10263	Ranger RX, incl. shoulder strap , battery box sync cord, Multivoltage charger, EL-Skyport Remote Adapter	
1x	20100	Ranger S – Head, 50 W modelling lamp, 3 m flash head cable	
1x		–	see description A below

Qty	Code n°	Ranger RX Speed / S-Head To Go N° 10272	Ranger RX Speed / S-Head To Go Case Set N° 10281
1x	10265	Ranger RX Speed, incl. shoulder strap , battery box sync cord, Multivoltage charger, EL-Skyport Remote Adapter	
1x	20100	Ranger S – Head, 50 W modelling lamp, 3 m flash head cable	
1x		–	see description B below

Qty	Code n°	Ranger RX Speed AS / S-Head To Go N° 10273	Ranger RX Speed AS / S-Head To Go Case Set N° 10282
1x	10267	Ranger RX Speed AS, incl. shoulder strap, battery box sync cord, Multivoltage charger, EL-Skyport Remote Adapter	
1x	20100	Ranger S – Head, 50 W modelling lamp, 3 m flash head cable	
1x		–	see description B below

Included In All Case Sets

Qty	Code n°	A	B
1x	26386	Varistar Umbrella Set 85 cm, includes Varistar Reflector 24 cm	Varistar Umbrella Set 85 cm, includes Varistar Reflector 24 cm
1x	26144	Reflector 18 cm / 60°	Reflector 18 cm / 60°
1x	33215	EL-Carrying Case	EL-Carrying Case
1x	19280	–	Spare Battery Box



Basic Sets



Pro Sets B

Radio Remote

System





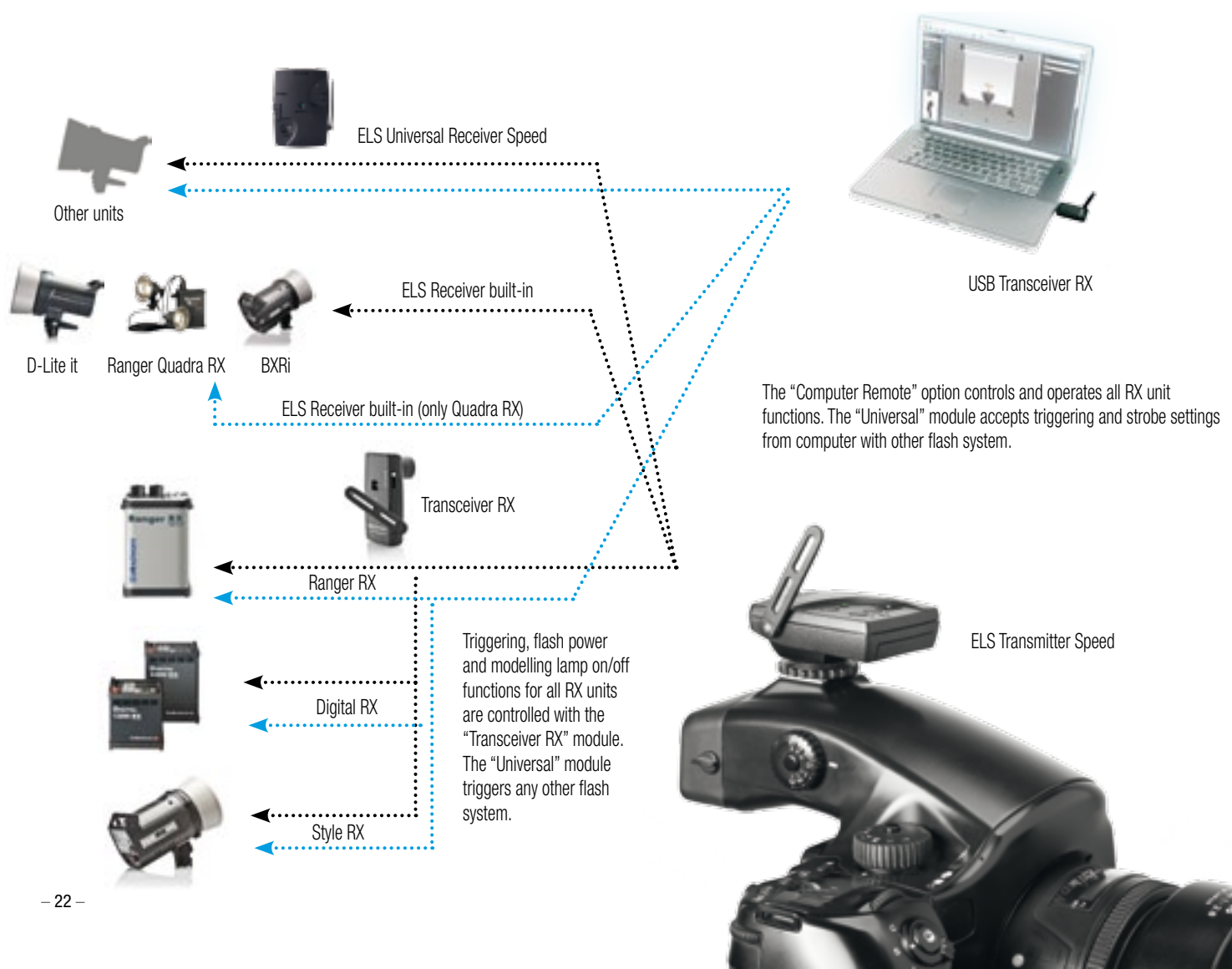
EL-Skyport Speed System

The EL-Skyport update includes new features and many improvements in compatibility and look.

The ELS System provides flash triggering and the remote control of all RX flash unit functions. For our latest compact flashes BXRI 250 / 500, D-Lite-it 2 / 4 and the Quadra RX battery unit with built-in EL-Skyport Transceiver, we offer the new Speed modus function, to enable faster synchronisation speeds with SLR cameras (up to 1/250 s). The Speed mode is also available for the new Universal Receiver Speed module, which is compatible with Elinchrom classic units and most of other flash brands. The Universal Receiver Speed module offers in addition the camera triggering using the sync socket. Just connect the camera and the Universal with optional available shutter release cables and trigger your camera wireless.

What's New

- New housing design with improved touch and function buttons.
- Camera Triggering, the Universal can shoot remotely Nikon / Canon cameras.
- Speed Sync function to sync SLR cameras up to 1/250 s.
- The LED shows the actual status of the ELS modules, if used in charging mode, Speed or Normal sync mode and the battery status.
- New free EL-Skyport software, with new features and performance at www.elincrom.com



EL-Skyport Transmitter Speed

The new ELS Transmitter Speed controls basic functions of BXRI 250/500, Ranger Quadra with the built-in ELS Receiver and Elinchrom RX units to which a Transceiver RX is attached. The D-Lite-it offers triggering, Group / Frequency channel settings and Speed Sync. To control all RX functions of Style RX, Ranger RX, Quadra RX (Only Quadra RX with serial numbers from 4001 onwards) and Digital RX power packs from a computer, the USB Transceiver RX 19354 / 19348 and the latest EL-Skyport software is required.

The ELS software, offers additional features such as Strobing, Flash-Counter, On/Off-Counter and more. The Transmitter Speed synchronizes remote flash units when each is fitted with either a "Universal" (fitting other flash brands) or the Transceiver RX (fitting Style RX, Digital RX and Ranger RX units) or units with built-in ELS Transceiver (BXRI 250/500 & Quadra RX). The RX Transceiver also provides control over the power and modelling lamp of all Elinchrom RX flash units, directly from the Skyport Transmitter Speed.

EL-Skyport Transmitter Speed
code N° 19350



What's New

- NORMAL & SPEED Sync modes. The "Normal" mode is fully compatible with previous EL-Skyport versions.
- Up to 1/150s shutter speed for SLR cameras in NORMAL mode and a 1/250 s in SPEED mode.
- Up to 60 m range indoor for NORMAL mode and up to 40 m in SPEED mode.
- Up to 120 m range outdoors for NORMAL mode and up to 70 m in SPEED mode.
- LED status for EL-Skyport sync mode and battery charge status.
- New integrated Hot-shoe with screw lock.
- New housing and switches.

Features

- +/- buttons to change flash power settings and modelling lamp on/off of RX, Quadra RX and BXRI units.
- Test button for manual flash trigger.
- Switch to select 8 Frequency channels, to avoid interferences with other wireless devices, or to separate workgroups.
- Switch to select 4 workgroups - adjusting and synchronising individual units or workgroups.
- The Long life Lithium Battery provides over 30000 flashes.
- The "All" switch controls all units in Workgroup 1-4.
- The moveable antenna optimises reception and working distance.

EL-Skyport Transmitter Eco code N° 19349

The ELS Transmitter ECO is part of every D-Lite-it Set and is available as a single item. The Transmitter Eco can be used as a spare item for the ELS Universal Receiver and Elinchrom flash units, like D-Lite-it 2 / 4, BXRI 250 / 500 and Quadra AS, or to release manually flashes to measure lights with a flash meter.

Features

- NORMAL & SPEED Sync modes. The "Normal" mode is fully compatible with previous EL-Skyport versions.
- The SPEED function is available for Quadra AS, BXRI 250 / 500 and D-Lite-it and all other units, when used with the EL-Skyport Universal Speed.
- Up to 50 m range indoor for Normal mode and up to 30 m in SPEED mode.
- Up to 80 m range outdoors for Normal mode and up to 40 m in SPEED mode.
- Battery life up to 6 Months - over 30'000 flashes.
- Test trigger button and feature button.
- Integrated Hot-shoe (middle contact).
- LED Status for Sync modes and battery status.
- 4 Frequency channels.

EL-Skyport Transmitter ECO
code N° 19349



EL-Skyport Universal Receiver Speed

The Universal SPEED Receiver is compatible with Classic Elinchrom units and any other flash brand. Delivered with EL- standard sync cable and 3.5 mm jack, to connect to other flash brands. The internal, rechargeable Li-Ion battery provides about 30 hours of battery operation. To maximise battery life, the Auto-Standby function activates when the unit is not used for 4 hours. The charger can be connected to the mains whilst the Universal Receiver is in operation. The status LED shows charge and operating modes. The Universal Receiver Speed includes several sync cables, adapters and the Multivoltage Charger with Euro, UK and USA mains adapters.

EL-Skyport Universal Receiver Speed | code N° 19347

EL-Skyport Universal Receiver Speed REPLACE | code N° 19346



EL-Skyport Universal Receiver Speed REPLACE

To purchase the ELS Universal Receiver REPLACE unit, a used Universal Receiver with a defective, or end of life battery must be returned to the dealer. The defective Universal modules will be recycled at Elinchrom to save the environment. The Universal Receiver REPLACE does not include sync cables or charger.

What's New

- SPEED and NORMAL SYNC Mode. The "Normal" mode is fully compatible with previous EL-Skyport versions.
- The SPEED function is also available for Quadra RX, BXRi and D-Lite-it with built in ELS Receivers and all other units using the Universal Speed.
- Up to 1/150s shutter speed for SLR cameras in NORMAL mode and a 1/250s in SPEED mode.
- Up to 60 m range indoor for NORMAL mode and up to 40 m in SPEED mode.
- Up to 120 m range outdoors for NORMAL mode and up to 70 m in SPEED mode.
- Camera Triggering, this feature requires special optional camera sync cables).
- LED Status for Normal and Speed sync modes and battery status.
- New housing and switches.

Features

- The included Charger recharges the Li-Ion battery in approximately 3 hours.
- The EL-Skyport software recognises this module as a flash unit and accepts triggering and Flash-Delay settings.
- Switch to select 8 Frequency channels, to avoid interferences with other wireless devices, or to separate workgroups.
- Switch to select 4 workgroups - adjusting and synchronising individual units or workgroups.
- Integrated Quick-Charge circuit with intelligent charging for deeply discharged Lithium-Ion batteries,
- Super small.. only 4 x 5 cm.
- Ultra lightweight.. only 54 g with the battery included.

EL-Skyport Transceiver RX

code N° 19353



EL-Skyport Transceiver RX

This module fits only Elinchrom RX units, using the integrated multiple interface for triggering. No internal battery is required, just plug into a Style RX, Digital RX unit and the Transceiver RX is ready to use. For Ranger RX, Speed and Speed AS, the ELS Transceiver Adapter 19374 is required.

The Transmitter Speed can control flash power, modelling lamp on/off and flash synchronisation. To control all RX functions with a computer, the latest EL-Skyport software and the USB RX Speed module is required. The EL-Skyport software offers additional features, such as the programmable "Flash Delay", Flash-Counter and other features. The software is available as a free download from www.elinchrom.com for MAC™ and WIN™ operating systems.

The Transceiver RX does not offer the Speed sync function, which is only available for the built-in ELS Receivers and the Universal Speed module.

EL-Skyport Universal Speed Trigger Set

code N° 19357

For classic Elinchrom flash units and other flash brands.

Qty	Code n°	Article
1x	19350	Transmitter Speed, incl. battery
1x	19347	Universal Receiver Speed
1x	19355	Multivoltage Charger with Euro, UK and USA mains adapter
1x	11120	Sync cable 20 cm, 2.5 mm jack – camera pc
1x	11122	Sync cable 40 cm, 3.5 mm - 3.5 mm Jack
1x	11123	Sync cable 40 cm, 3.5 mm jack - EL Standard Sync socket
1x	11126	Sync Adapter 3.5 - PC female
1x	11125	Sync Adapter 6.2 - 3.5 jack



EL-Skyport RX Trigger Set

code N° 19358

Only for Style RX, Digital RX and Ranger RX battery units.

Qty	Code n°	Article
1x	19350	Transmitter Speed, incl. battery
2x	19353	Transceiver RX
1x	11120	Sync cable 20 cm, 2.5 mm jack - camera pc

EL-Skyport Computer Remote & Trigger Set

code N° 19359

Only for Style RX, Digital RX and Ranger RX battery units.

Qty	Code n°	Article
1x	19350	Transmitter Speed, incl. battery
2x	19353	Transceiver RX
1x	19348	USB Transceiver RX
1x	11120	Sync cable 20 cm, 2.5mm Jack / Camera X-socket
1x	11121	USB extension cable

The latest EL-Skyport Software for MAC™ or WIN™ operating systems is required, which is available as a free download at www.elinchrom.com. The Ranger RX requires the ELS Transceiver RX Adapter 19374, which is part of every Ranger RX unit.



For further details, upgrades, news, the latest information about the EL-Skyport system and «how to do», please visit frequently the Elinchrom website. In the Support area the latest user guides and technical specifications can be downloaded. Technical data, features and functions of Elinchrom flash units and the EL-Skyport system may change without advise. No guarantee for misprints.

USB Transceiver RX

code N° 19348



USB Transceiver RX

The USB RX Transceiver Speed module fits any MAC™ or WIN™ computer. By installing the EL-Skyport software, all Elinchrom RX flash units can be controlled. The program automatically searches for the “Transceiver RX”, “Universal Receiver Speed” and the built-in ELS Receiver (Quadra RX) modules. The “Universal Receiver” can only offer synchronisation and Strobing option.

Features

- Full remote control for the Quadra RX (Only Quadra RX with serial numbers from 4001 onwards) with built-in ELS Receiver.
- Full remote control with all Elinchrom RX units; Style RX 300/600/1200, Digital RX 1200/2400, and Ranger RX, RX Speed and RX Speed AS, using the ELS Transceiver RX. Note: The Ranger RX Battery power packs require the ELS Transceiver RX Adapter (19374)
- The EL-Skyport software is available as a «Free Download» in our «Support» section at www.elinchrom.com.

EL-Skyport Studio Management Software

The latest release of the EL-Skyport software includes exciting features for photographers who are optimising their digital workflow by using MAC™ or WIN™ operating systems. The modern, digital studio management software operates Style RX compacts, Ranger RX battery power packs, Digital RX studio power packs and Quadra RX battery units in all functions and adds even more features to EL- RX flash units such as Flash-Counter and Stobing-Effects. For the Quadra RX we offer the Firmware update option. The Quadra RX is the first unit, which accepts a wireless Firmware update. More Elinchrom units will offer this useful

feature in the future, which saves money and time. Another improved feature is the Photo-Job function. Photo-Job can simulate and store a complete Studio setup with EL-flash units, reflectors and all unit settings. In addition images of the setup or the results can be imported. The data files can be submitted to another photographer, who can import all data into his ELS software to simulate studio setups, if required. Students, or anybody who wants to learn more about lighting can exchange results in photography forums.

Features

- Modelling lamp setting in 1/10 f-stop, proportional, free and off.
- Photocell on/off.
- Ready charge beep on/off.
- Flashhead socket selection A/B (only activated with Digital RX power packs).
- Programmable Photocell Pre-Flash Management feature.
- Programmable EL-Skyport features for built-in Receivers (Quadra RX).
- Firmware Update (Quadra RX).
- Programmable Timer (Quadra RX).
- Flash-Counter and ON/OFF-Counter;

the software reads out online RX flash information. This data is stored in the RX Micro controller and is not resettable. This is useful information for Rental, Service and Second-User.

- Flash-Delay; Individually programmable for Strobing effects.
- Standby.
- Photo-Job Studio Management;
- Preferences; Individually programmable.

NOTE: The program automatically searches for "RX" units. Unit control displays are different, depending if compacts, power pack and battery units are activated and found in the system. Flash power setting in 1/10 f-stop or in individually settable steps.

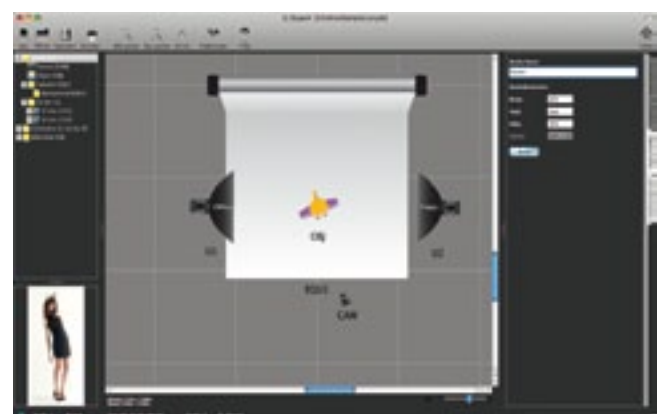
What you need to make it work

- Elinchrom Style RX compacts, Digital RX power packs, or Ranger RX battery power packs with the included computer interface, with one Transceiver RX module for each RX unit. The Quadra RX offers the built-in ELS Receiver, no extra Transceiver is required.
- EL Skyport USB RX Transceiver RX for the computer
- The latest release of the EL Skyport software for MAC™ or WIN™ operating systems and of course a computer. The software is available as a free download at www.elinchrom.com.

NOTE: Some EL-flash units do not offer the Computer Remote option, but Studio Setups can be simulated manually.



EL-Skyport 3.0



Continuous Light



ScanLite

Halogen ScanLites are an excellent choice for low cost digital photography, video and many other imaging requirements. Essentially they are flashheads without full electronics, they have the same low noise fan and the huge range of Elinchrom accessories. Available as single units of three different powers, two head and three head sets are offered with included selection of lamps and fuses to allow varied power combinations. Housed in the stylish Elinchrom 33209 case, they make an elegant outfit when in use. The approximate stand sets and carrying bag are listed separately as requested by the owners of flash systems who wish to purchase the lamp heads. If the stand umbrella sets are required, they are priced very competitively.



Why ScanLite?

- Asymmetrical distribution by using 150 W, 300 W, 650 W & 1000 W Halogen lamps with Pyrex dome.
- Low noise cooling fan and overheat protection (thermal cut out).
- Huge range of accessories; reflectors, umbrellas and softboxes.
- Reflector bayonet with breech locking ring, accepts Elinchrom accessories since 1974.

230 V

ScanLite 300 W

code N° 20996

incl. glass dome, lamp

ScanLite 650 W

code N° 20997

incl. glass dome, lamp

ScanLite 1000 W

code N° 20994

incl. glass dome, lamp

110 V

ScanLite 1000 W

code N° 20993

incl. glass dome, lamp

Halogen 1000 W

code N° 23053

ScanLite To Go 2 Head Set

code N° 20657

230 V		
Qty	Code n°	Article
1x	20996	ScanLite 300W incl. glass dome, lamp
1x	20997	ScanLite 650W incl. glass dome, lamp
2x	26143	Reflector 16 cm
1x	23005	Halogen 650 W
1x	23052	Halogen 1000 W + 19037. PC
1x	33209	Elinchrom black case

Note: Replace fuse when used with other halogen lamp wattage. The images may show accessories, which are not included in this set.



The Stand Set must be ordered separately!

ScanLite To Go 3 Head Set

code N° 20658

230 V		
Qty	Code n°	Article
1x	20996	ScanLite 300 W incl. glass dome, lamp
1x	20997	ScanLite 650W incl. glass dome, lamp
1x	20994	ScanLite 1000 W incl. glass dome, lamp
3x	26143	Reflector 16 cm
1x	23005	Halogen 650 W
1x	23052	Halogen 1000 W
1x	33209	Elinchrom black case

Note: Replace fuse when used with other halogen lamp wattage. The images may show accessories, which are not included in this set.



The Stand Set must be ordered separately!

MiniLite

A low priced professional lighting system ideal for digital imaging of small portable products. Supplied as head sets alone for users already equipped with stands or as a complete "Ready to Go" kit.



Why MiniLite?

- Robust lightweight metal housing. Classic Elinchrom!
- Low noise fan cooling and illuminated on / off switch!
- Multi-purpose reflector, for direct or indirect lighting!
- Detachable mains cable!
- Accepts all Prolinca and Elinchrom accessories! since 1974.

MiniLite To Go, Set & Kit

These are super economy units using a modified Elinchrom flashhead for tungsten (Halostar) imaging. The Set is a single system without stand. The Kit is a double set without stands. A stand set with carrying bag is available at a promotional price and any Elinchrom accessory may be used to create an almost unlimited range of effects.



MiniLite Kit

code N° 20653

230 V		
Qty	Code n°	Article
2x	20990	MiniLite incl. cable
2x	23018	Halolux 250 W / E27
2x	23002	Lamp 100 W / E27
2x	26144	Reflector 18 cm

MiniLite Set

code N° 20651

230 V		
Qty	Code n°	Article
1x	20990	MiniLite incl. cable
1x	23018	Halolux 250 W / E27
1x	23002	Lamp 100 W / E27
1x	26144	Reflector 18 cm

Stand / Umbrella Set To Go

code N° 20564

Optional (not included in the MiniLite Kit & Set)		
Qty	Code n°	Article
2x	30101	Stand 88 – 235 cm
1x	26351	Umbrella translucent 83 cm
1x	26350	Umbrella silver 83 cm
1x	33220	Elinchrom Carrying bag





Accessories

Rotalux Softbox

The easy mounting Rotalux system is probably the most widely copied of all softbox systems. However, it is easier to copy a design than a quality and they remain the best units in their class. What continues to make the Elinchrom units unique are the sets of deflectors – gold, silver and translucent that enable the softness / hardness and colour to be modified; fitting centrally over the flashtube at your chosen distance. Folding down like an umbrella, they are easily transported, or just kept clean in their included carrying bag. Rotalux Speedring with improved mechanics and extremely light weight, only 263 g. Improved finish of the Rotalux reflector tissue with grey piping. Better light efficiency.

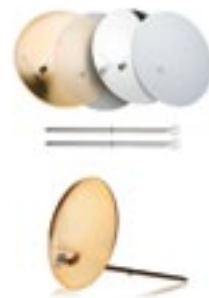
Every Sofboxes come with:

- Reflectiv Fabric
- External Diffuser
- Internal Diffuser
- Speed Ring
- Rods
- Carrying Bag

360° rotating system for all Rotalux softboxes



Rotalux folds like an umbrellas for transportation.



Deflector Set
(silver, gold, translucent, frost)

code N° 26310

Elinchrom is the only system with the central umbrella fitting, which is essential when Reflectors or Rotalux softboxes are used with Deflector Sets. Accessories, which can eliminate, soften and tone sharp shadow edges. Very efficient with Rotalux softboxes. The set contains four different deflectors; gold, silver, frost and translucent with 14 cm diameter.

Rotalux Square



Rotalux
70 x 70 cm

code N° 26178
Depth : 32 cm



Hooded Diffuser
70 x 70 cm

code N° 26322



RotaGrid
70 x 70 cm

code N° 26117



Rotalux
100 x 100 cm

code N° 26179
Depth : 42 cm



Hooded Diffuser
100 x 100 cm

code N° 26323

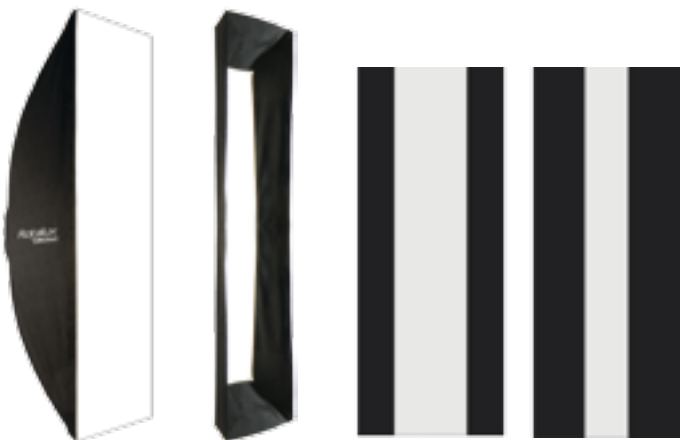
Rotalux Strip



Rotalux
35 x 90 cm
code N° 26180
Depth : 25 cm

Hooded Diffuser
35 x 90 cm
code N° 26324

Strip Diffuser
15 x 90 cm
code N° 26268



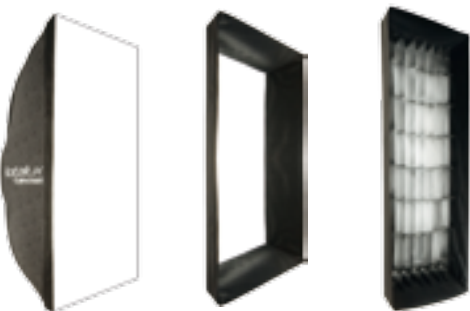
Rotalux
50 x 130 cm
code N° 26181
Depth : 42 cm

Hooded Diffuser
50 x 130 cm
code N° 26325

Strip Diffuser
25 x 130 cm
code N° 26270

Strip Diffuser
15 x 130 cm
code N° 26269

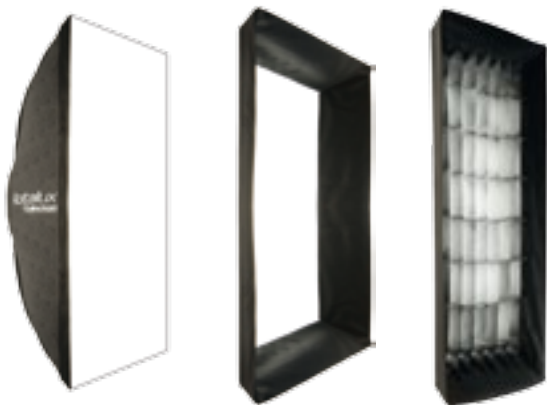
Rotalux Recta



Rotalux
60 x 80 cm
code N° 26175
Depth : 30 cm

Hooded Diffuser
60 x 80 cm
code N° 26318

RotaGrid
60 x 80 cm
code N° 26110



Rotalux
90 x 110 cm
code N° 26176
Depth : 42 cm

Hooded Diffuser
90 x 110 cm
code N° 26319

RotaGrid
90 x 110 cm
code N° 26111

Rotalux Octa



Rotalux
ø 100 cm

code N° 26183
Depth : 35 cm



Hooded Diffuser
ø 100 cm

code N° 26326



Rotalux
ø 135 cm

code N° 26184
Depth : 42 cm



Hooded Diffuser
ø 135 cm

code N° 26327



Rotalux
ø 175 cm

code N° 26186
Depth : 50 cm



Hooded Diffuser
ø 175 cm

code N° 26320

Rotalux Deep Octa



Rotalux
ø 70 cm

code N° 26187
Depth : 40 cm



Hooded Diffuser
ø 70 cm

code N° 26770



Rotalux
ø 100 cm

code N° 26185
Depth : 65 cm



Hooded Diffuser
ø 100 cm

code N° 26328

Portalite

The new Portalite diffuser and black-silver tissue are the same quality materials which Elinca uses for Rotalux but priced to budget. The EL Speed-Ring and rods are re-designed and the result is a softbox better stability and is easier to assemble. The single diffuser softbox line is available in 40 x 40 cm, 55 x 55 cm and 66 x 66 cm. Portalite is an entry-level softbox system with great light performance and fits to all Prolinca and Elinchrom flash units since 1974. Instead of using third party accessories, which may not fit to required specifications, Portalite is a professional and low price alternative. ideal car boot set for outdoor use.



Portalite
66 x 66 cm

code N° 26129

Portalite
55 x 55 cm

code N° 26126

Portalite
40 x 40 cm

code N° 26123

Spot on at Elinchrom

The Elinchrom Fresnel- and Projection Spot-Line covers all professional needs for sophisticated lighting in portrait and commercial photography. High quality projection-lenses allow precise and crisp illumination. Spot - Accessory Type: Usable with any Elinchrom/Prolinca head.



Zoom Spot 18°- 36°

code N° 26481

The new accessory spot accepts all Elinchrom and Prolinca heads. High quality lenses for size and sharpness control. Complete with four integral masking "blades". To simplify maintenance, the lenses are easily accessible for cleaning.



Minispot - Accessory Type

code N° 26420

A basic hard edged spot. Supplied complete with gobo/filter holder and one set of gobo's, various shapes and spots. Fits to any ventilated Elinchrom flashhead.

Zoom Spot Accessory Set

code N° 26484

Gobo holder, 10 gobos, 2 front masks, filter holder, set of 10 assorted filters. The ultimate "Zoom Set".



Incl. listed accessories:

Set of 5 gobos ø 52.5mm code N° 26418

Filter holder code N° 26422

Lens code N° 26423

Fibre Optic Kit

The "captor" holds up to three cables, one metre long and 10 mm diameter for maximum light transmission. Correctly colour balanced, they are indispensable for most small object- photography and dynamise larger subjects by highlighting or throwing long isolated shadows. Fits to any ventilated Elinchrom flashhead.



Fibre Optic Kit 1

code N° 26431

Kit with **one** glass fibre cable
Incl. case and listed accessories:

- **Fibre cable adapter** | code N° 26433
- **Accessory/filter-holder** | code N° 26434
- **Focussing tube** | code N° 26435
- **Lens hood** | code N° 26436
- **Adapter f. duct extension** | code N° 26437
- **Set of 10 filters** | code N° 26438
- **Quick coupling device** | code N° 31150
- **Metal base plate** | code N° 31153
- **Articulated arm** | code N° 31161
- **Fibre duct holder** | code N° 31162
- **Mini holder for accessories** | code N° 31163
- **Carrying base** | code N° 33208
- **Fibre duct** | code N° 50163

Fibre Optic Kit 2

code N° 26430

Kit with **two** glass fibre cables
Additional to Kit 1:

- **Accessory/filter holder** | code N° 26434
- **Focussing tube** | code N° 26435
- **Lens hood** | code N° 26436
- **Articulated arm** | code N° 31161
- **Fibre cable holder** | code N° 31162
- **Fibre duct** | code N° 50163

Invented in 1982, their unique patented construction and design have won these large lightweight softboxes worldwide popularity. A lightweight die cast rigid central mounting for the flashhead inside the unit, which places the flashtube at the point of focus. The optical result is a light source, which is so even at the diffuser surface, that many famous photographers use the Octa as a single light source for portrait photography. In the U.S.A. it is often referred to as "The Beauty Light". This exceptional softness of the light has sold many of thousands of units, adapted to other flash systems which do not have equivalent light sources.

Indirect Lights Advantages

- Super fast to set up, with the unique EL folding construction.
- 360° rotating system.
- All Indirect Light Banks are supplied with a Carrying Bag.
- Accepts BXRi or Style RX compact flashes, which can be easily controlled with the EL-Skyport Remote and Trigger System.
- Accepts all Elinchrom flashheads including the Ranger Quadra Heads, with Adapter Ring 26339.



Product with diffuser

EL-Octa 190 cm

code N° 26158

360° rotating system, incl. diffuser and carrying bag. Does not include flashhead and tripod.



EL-Quadra 145 x 145 cm

code N° 26156

360° rotating system, incl. diffuser and carrying bag. Does not include flashhead and tripod.

EL-Recta 72 x 175 cm

code N° 26154

360° rotating system, incl. diffuser and carrying bag. Does not include flashhead and tripod.



**EL-Strip
33 x 175 cm**

code N° 26158

360° rotating system, incl. diffuser and carrying bag. Does not include flashhead and tripod.

Rotalux Deep Indirect

This new design is based on the Rotalux softbox range and accepts an indirectly, internally fitted flash unit.

This design offers a superb crispy light, when used without diffuser and can be modified to a soft light with softer shadows by using the included diffuser. All Fashion / Beauty images in this brochure are photographed with the new Rotalux Deep 150.

Included is a carrying bag and the external diffuser. The indirect light bank folds down like the Rotalux softboxes and can be easily transported.

The Facts

- Diameter 150 cm
- Depth 73 cm / total depth with tilt head and handle 96 cm
- 360° revolving system with screw locking
- Including carrying bag and external diffuser
- Optional available Hooded Diffuser // 26771
- Requires the EL-Tripod 31043 or heavier

Rotalux Deep Indirect 150 cm

code N° 26188

incl. standard diffuser and carrying bag.

Hooded Diffuser (optional)

code N° 26771



A wide range of superbly designed accessories, completely compatible with the entire Elinchrom and Prolinca studio flash system. Each reflector is designed to do a different job. Decide how you want the lighting to look like and there will be a reflector with precisely the right profile. Endless lighting possibilities guaranteed!



Reflector Standard 21 cm 50°

code N° 26141

This standard reflector combines a high output with a good spread of light. Now with internal recess, for push in high efficiency grids.



Reflector Compact 21 cm 65°

code N° 26140

A medium, to wide-angle reflector, well suited for colour gelling large areas.



Reflector 18 cm 60°

code N° 26144

A general-purpose reflector for travelling. Now with internal recess, for push in 18 cm grids.



Reflector Wide 16 cm 90°

code N° 26143

Gives a wide even coverage, excellent for copy work, single source or groups.



Reflector High Performance 26 cm 48°

code N° 26137

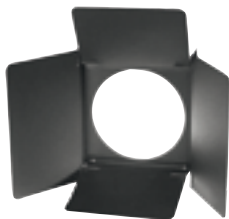
A bright, high performance reflector, ideal for general sports applications.



Reflector Grid Set 21 Basic

code N° 26049

Reflector 21 cm 50° 26141
30° Grid 26052
20° Grid 26053



Barndoor Set 21

code N° 26037

Light shaper carrier 26034
Barndoors 26x16 cm 26006 / 2x
Barndoors 21x15 cm 26009 / 2x



Reflector Grid Set 18 Complete

code N° 26135

Reflector 18 cm 65° 26144
30° Grid 26100
20° Grid 26101
12° Grid 26102
Gel holder Grid 26132



Reflector Background

code N° 26165

Delivers an oval pool of evenly distributed light for background and still life. 32 x 21 cm; 360° rotating.



Reflector Maxi-Lite 40 cm 43°

code N° 26147

Ideal for sunlight effects through windows; creates hard and brilliant highlights.



Reflector Grid Set 21 Complete

code N° 26051

Reflector 21 cm 50° 26141
30° Grid 26052
20° Grid 26053
12° Grid 26054
8° Grid 26055

Barndoor Set 21 Professionnal

code N° 26039

Light shaper carrier 26034
Including Trapezium, various sizes:
Barndoors 26x16 cm 26006 / 2x
Barndoors 21x15 cm 26009 / 2x
Barndoors 20 x 15 cm / 4x



Bayonet Reflector Support Set

code N° 22061

This useful set of four bayonet adapter rings accepts Elinchrom reflectors since 1974. Mounted on free studio wall, reflectors and Rotalux softboxes are safely stored.



Reflector Varistar 24 cm 90°

code N° 26164

Wide coverage with central "hotspot".



Reflector Maxi-Spot 40 cm 29°

code N° 26149

The same shape as the Maxi-Lite Reflector, but produced with brilliant, glossy reflection material for very high efficiency, throws light even over longest distances. A narrow powerful beam creates deep, sharp shadows.

Protective Hood

code N° 26124

For all heads and compacts.



The Beauty Dishes

Ideal reflectors for soft and diffused light used with either the gold, silver, translucent or frost deflector dish. The Deflectors modify colour and softness.



Reflector Softlite 70 cm 81°

code N° 26169
white, incl. Deflector Set 26310



Reflector Softlite 70 cm 76°

code N° 26167
silver, incl. Deflector Set 26310

Reflector Softlite 44 cm 84°

code N° 26168
white, incl. Deflector Set 26310

Reflector Softlite 44 cm 69°

code N° 26166
silver, incl. Deflector Set 26310

EL-Deflector Set

Elinchrom and Prolinca are the only systems with the central umbrella fitting, which is essential when EL-reflectors or Rotalux softboxes are used with Deflector Sets. Accessories, which can eliminate, soften and tone sharp shadow edges. Very efficient with Rotalux softboxes.



Deflector Set

code N° 26310
The Deflector Set includes each one Deflector in silver, gold, translucent, frost and 2x Deflector Rods.



Deflector translucent 14 cm

code N° 26305



Snoot

code N° 26061
A traditional accessory, designed to give an approx. 15° controlled spot of light, with a hard shadow effect. Includes one Snoot Grid.



Snoot Grid Set 3

code N° 26427
Grids of various honeycomb sizes deliver a sharply defined concentrated light source of exceptional quality. The grid is an easy retro fit, with clips to grip the interior of the snoot.

The Grid necessarily restricts ventilation of the Snoot. Please monitor heat level at all times. High wattage tungsten lamps or high power multi-flashing are liable to cause overheating.

Diffusing Filters

Add extra softness. The diffusers are available in three sizes. Manufactured from a spun glass material to provide resistance to heat.

Diffusing Filters 21 cm

code N° 26249
Set of ten filters, to fit the 21 cm Accessory holder 26034

Polarizing Filters

The rotating facility of the Accessory holder means that Elinchrom flash can be successfully polarized to help control reflections and unwanted highlights. Polarizing filters absorb heat, so reduce modelling lamp power whenever possible.

Polarizing Filter 21cm

code N° 26244
One filter, to fit the 21 cm Accessory holder 26034

Colour Gels 21 cm

code N° 26243
Set of ten assorted gels in bright colours. They can be fitted on the 21 cm 26034 to bring vivid colour to any photography. Note: green blue and purple all absorb heat rapidly and may melt.



Varistar 85 & 105 cm

The multitasking umbrella, for in and out of studio use. Easy to erect, lightweight and fits into most Elinchrom carrying bags. The umbrella comes with protective bag and the Varistar Set includes one 26164 Reflector Varistar 24 cm. Ideal for industrial, portraits and groups. Varistar is even in light distribution due to its central positioning over reflector and flashtube.

Varistar Umbrella 85 cm

code N°26383

Incl. protection bag.

Varistar Set 85

code N°26386

Includes: Varistar 85 cm, protection bag, and Reflector Varistar 24 cm.

Varistar Umbrella 105 cm

code N°26384

Incl. protection bag.

Varistar Set 105

code N°26385

Includes: Varistar 105 cm, protection bag and Reflector Varistar 24 cm.



ECO Umbrellas

ECO Umbrella

Silver 83 cm

code N°26350

ECO Umbrella

Translucent 83 cm

code N°26351



ECO Umbrella Set

code N°26062

Includes 1x 26351, 1x 26350

EL-Daylight Blue 105 cm

code N°26380

Converts Tungsten-Halogen light 3200° into Daylight 5500° Kelvin

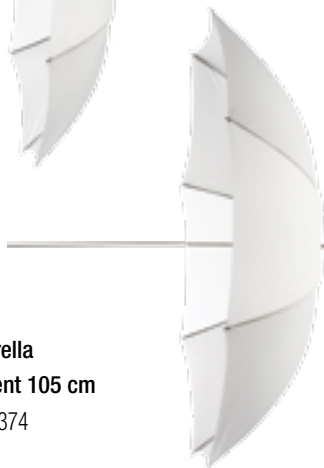


Professional Umbrellas

Pro Umbrella
Translucent 85 cm
code N°26371



Pro Umbrella
Translucent 105 cm
code N°26374



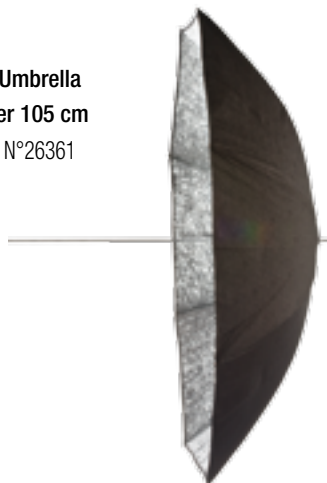
Pro Umbrella
White 85 cm
code N°26372



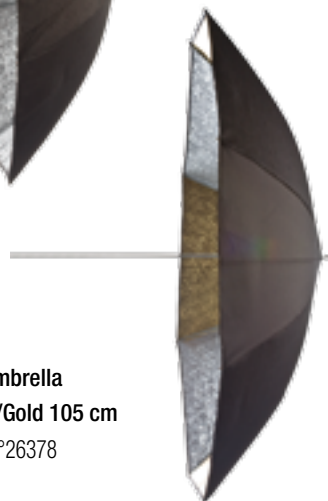
Pro Umbrella
White 105 cm
code N°26375



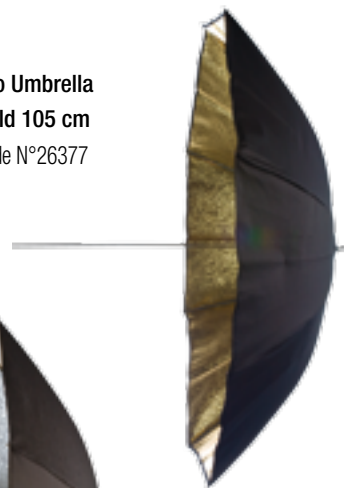
Pro Umbrella
Silver 105 cm
code N°26361



Pro Umbrella
Silver/Gold 105 cm
code N°26378



Pro Umbrella
Gold 105 cm
code N°26377



Pro Umbrella
Bronze 105 cm
code N°26379



EL-Boom Arm 63 – 156 cm

code N° 31049

The EL- Boom Arm with rubberised handgrip extends head / hair lights up to 156 cm. This is a comfortable way, to hold up lighting gear over the subject. The profiled extension tube avoids heads, reflectors spinning around, even when used with a softbox. The two sections of the EL-Boom Arm can be quickly adjusted with the clip-locks.

- Min. size: two sections, 63 cm
- Max. extension 156 cm
- Weight: 0.44 kg
- Rubberised handgrip
- Profiled aluminium tubes
- Standard spigot for EL-Flashheads and the Ranger Quadra heads.



Vacuum Grip

code N° 22900

The Vacuum Grip allows you to fix Elinchrom Heads and accessories on glossy glass surfaces. Very usefull when taking images in small spaces.

- Maximum load: up to 2.5 kg
- Bracket length: 15 cm with 16 mm Spigot
- Grip surface in diameter: 12 cm
- Length over all: 18.3 cm



Polystand

code N° 31045

With the Polystand unique sliding column and adjustable permanently mounted boom a head or accessory can be placed up to 335 cm, or as low as 5 cm from floor level. Folds flat for travelling.

- Folded min. size: two sections, 150 cm
- Max. height: 335 cm
- Weight: 5.5 kg
- Max load: 8 kg/Boom 3kg
- Dimensions: 150 x 33 x 21 cm
- Boom: 154 cm



EL-Tripods Specifications

	Polystand	EL-Tripod Air 201-265cm	EL-Tripod 88-235cm	EL-Tripod 52-190cm	EL-Boom Arm 63-156cm
Code	31045	31043	30101	31048	31049
Folded size in.	150 cm	102 cm	88 cm	52 cm	63 cm
Extention max.	335 cm	265 cm	235 cm	190 cm	156 cm
Extra	-	Air Cushioned	-	-	-
Boom	154 cm	-	-	-	156 cm
Load max	8 kg/Boom 3kg	9.5 kg	4.5 kg	1.8 kg	2 kg
Diameter	33 x 21 cm	9.5 cm	8 cm	7.5 cm	3 cm
Weight	5.5 kg	2.09 kg	1.72 kg	1.19 kg	0.44 kg

Studio Stand

code N° 30151

Sliding arm studio stand with braked wheels. It features a very low minimum head position (15 to 250 cm) and accepts additional sliding arms. Weight 7.5 kg.



Tripod 52–190 cm | code N° 31048

The new compact, aluminium lightweight stand is designed for small heads, e.g. the Quadra heads. With only 1.19 kg and 52 cm folded size, this stand is ultra transportable. The EL-Stand Set includes one carrying bag with shoulder strap and two stands. The perfect add on for our Quadra Sets.

Tripod Set 52-190 cm | code N° 31050

2x Tripods 52 - 190 cm 31048, 1x EL-Carrying bag



Tripod 88 – 235 cm | code N° 30101

The EL stand/umbrella sets are dedicated to the Elinchrom flash sets and can be ordered separately. The configurations are covering 2 and 3-headed sets.

Tripod Set 2 | code N° 30162

2x Tripod 88–235 cm 30101, 1x EL-Carrying bag 33230



Tripod Set 3 | code N° 30161

3x Tripod 88–235 cm 30101, 1x EL-Carrying bag 33220



Tripod Air 102-264 cm | code N° 31043 (Air cushioned)

Tripod Air Set 102-264 cm | code N° 31051 (Air cushioned)

2x Tripod 102-264 cm, 1x EL-Carrying bag 33222



Tripod - Umbrella Set To Go | code N° 20564

2x Tripod 88–235 cm 30101, 1x Umbrella translucent 83 cm 26351, Umbrella silver 88 cm 26350, 1x EL-Carrying bag 33220

Tripod - Umbrella Set To Go | code N° 20536

2x Tripod 88–235 cm 30101, 1x Umbrella translucent 85 cm 26371, 1x Umbrella white 88 cm 26372, 1x EL-Carrying bag 33220



EL-Carrying Bags

For tripods & umbrellas 68 cm | code N° 33218

For 3x tripods & umbrellas up to 87 cm | code N° 33220

For 2x tripods up to 87 cm | code N° 33230

For 3x stands & umbrellas up to 110 cm | code N° 33222

For Indirect Lights; Octa, Quadra, Recta & Strip | code N° 33221

For Rotalux 26178, 26180, 26183, 26175 | code N° 33226

For Rotalux 26179, 26181, 26184, 26176 | code N° 33227

For Rotalux 26186 | code N° 33228

Manfrotto Tripods and Accessories

Elinca	Manfrotto	Article
14599	013	Adapter Spigot 1/4 + 3/8" male
30127.B	366b	First tripod 85-200 black
30129	017	Roller Set Deluxe for 30128.B, ø 19
30139.B	012b	Mini Tripod 9-85 cm, black
30149.B	004b	Master Tripod 109-385 cm
30150	018	Roller Set Master for 30149
30151	231	Sliding Support Stand complete
30152	231 Arm	Sliding Support Arm spare, only for 30151
31061.B	024 b	Boom Arm black 3 x 70 cm
31065.B	085bs	Light Boom Stand / boom in black
31070.B	025bs	Super Boom Stand / boom in black
31074	083Nw	Tripod 2 Wind-up + wheel set

Elinca	Manfrotto	Article
31075	087Nw/104	Tripod 3 Wind-up + wheel set
31077	104	Wheel Set diam. 75 for 31074 + 31075
31151.B	154b	Triple lamp support black (lamp carrier)
31152	026Z	Umbrella Adapter
31158.B	098b	Telescopic Wall Boom
31159	143	Magic Arm Set
31164	035Z	Super Clamp
32058.B	032b	Autopole 2,1-3,7m, black
31059	045	Triple Hooks for background paper
32060	046	Expan Set, holds background paper
32061	272	Telescopic Background Support 3 sections

EL - Set Cases



EL - Compact Case | code N° 33209

New modern look with ergonomic carrying handle and locking system. Carries and protects three compact flashes Style RX 300, 600, 1200 or Elinchrom flashheads. 63.5 x 46 x 20.5 cm, 4.75 kg

Pro Basic Set | code N° 20767

Sync cord 11075
Reflector 16 cm 26143
Reflector 18 cm 26144
Umbrella translucent 85 cm 26371
Umbrella white 85 cm 26372
EL-Compact Case 33209
Carrying bag 33220



EL - Power Pack Case

code N° 33215

For all Digital RX packs, all Ranger RX models and 1-2 flashheads.



EL-Tube Bag BXRi | code N° 33199

Carry and protects two BX-Ri 250 / 500

EL-Tube Bag D-Lite-it | code N° 33198

Carry and protects two D-Lite-it 200 / 400



EL-Skyport Hard Shell Case | code N° 33000

EL - Tables

The EL Multi -Table is a flexible creative tool for universal Table-Top shootings. The latest design is a robust, ultra stable aluminium profile construction and is very easy to setup. The EL Multi Table offers variable radius curves with a multi-angle, adjustable height-shooting surface. A secondary transparent shooting surface enables heavier objects to be photographed without the surface deforming. An optional, additional tray can be mounted for reflective or transmitted lighting effects.



EL Multi-Table Complete

code N° 19228

Includes a Plexiglas plate white, matt / glossy 80 x 200 cm / 7.5 kg & transparent Plexiglas plate 80 x 100 cm / 11.5 kg



19228 + 19226

EL Multi-Table | code N° 19227

without plexiglas plates.

EL Multi-Table additional tray | code N° 19226

Including plexiglas plate transparent 80 x 100 cm for second shooting surface.

EL Multi-Table additional tray | code N° 19225

Without plexiglas plate.

Plexiglas plate white | code N° 26265

Matt/glossy 200 x 80 cm

Plexiglas plate transparent | code N° 26267

80 x 100 cm

EL Computer-Table | code N° 22901

The Computer Table supports 13", 15" and 17" Laptops and is a useful studio accessory for digital imaging.

The base is made of metal and includes the tilt-head, which fits to any standard tripod with 16 mm spigots.

To ensure best possible stability and drop down security, the EL-Tripod 31043, or heavier is required.

- Dimensions: width: 50 cm, depth: 28 cm
- Weight including tilt-head 1.5 kg
- Supports Laptops up to 40 cm x 27 cm / 3.5 kg





EL-Sync Cord 5m | code N° 11088

Camera pc > 3.5 mm jack
EL units with 3.5 mm sync plug: Style, Style S, Style RX, FX, BX, Chic 1/2, Digital 1/2, Digital RX 1200/2400, D-Lite, D-Lite-it, BXRI.



EL-Sync Extension Cord 10m | code N° 11080

EL-Amphenol female > male
To extend following sync cords: 11075, 11074, 11089, 11081, 11083, 11072.



Sync Cord Transmitter 20 cm | code N° 11120

Camera pc > 2.5 jack
This cable connects the EL-Skyport Transmitter or the Prolinca IR-Transmitter with the camera PC socket.



EL-Sync Cord 2m | code N° 11084

Camera pc > 3.5 mm jack
EL units with 3.5 mm sync plug: Style, Style S, Style RX, FX, BX, Chic 1/2, Digital 1/2, Digital RX 1200/2400, D-Lite, D-Lite-it, BXRI.



EL-External Photocell with clamp 5m

code N° 11081

EL-Amphenol > photocell
A photocell mounted on a clamp with 5 m sync cable and standard EL-Amphenol plug for EL flash units, except Style FX, BX, D-Lite, D-Lite-it, BXRI. To be used when the master flash is too far or even hidden from the built-in photocell. Style FX, BX, D-Lite, D-Lite-it and BXRI.



Sync Adapter 3.5-PC | code N° 11126

The Sync Adapter 3.5 mm - PC (female) connects the EL-Skyport Universal Speed Receiver with any other PC (male) sync plug.



EL-Sync Cord 5m | code N° 11075

Camera pc > EL-Amphenol
Elinchrom standard sync cord for all self-contained (compact) flash units and power packs. Except Style FX, BX, D-Lite, D-Lite-it and BXRI.



Sync Adapter 6.2 - 3.5 J | code N° 11125

Sync Adapter 6.2 - 3.5 j. This device converts 6.2 sync plugs to 3.5 mm standard sync sockets. The Sync Adapter is part of the EL-Skyport Universal Set 19360.



EL-Spiral Sync Cord 5m | code N° 11074

Camera pc > EL-Amphenol
Gold plated contacts to increase the connectivity, with a flexible spiral section, for all EL compacts and power packs. Except Style FX, BX, D-Lite, D-Lite-it and BXRI.



EL-Sync Adapter 6.35 phone jack 10 cm

code N° 11083

EL Amphenol > 6.35 phone jack female
To connect sync cords with 6.35 phone jack. Except Style FX, BX, D-Lite, D-Lite-it and BXRI.



EL-FRC Sync Cable-Receiver 50 cm

code N° 11072

EL-Amphenol male > 2.5 jack
This cable connects the FRC Receiver 19316 with the EL flash unit. Except Style FX, BX, D-Lite, D-Lite-it and BXRI.



EL-Sync Hardwire Cord 5 m | code N° 11089

3.5 mm jack > EL-Amphenol
To hardwire units in case the photocell has a bad reception due to long distance between flash units. For all self-contained (compact) flash units and power packs. Except Style FX, BX, D-Lite, D-Lite-it and BXRI.



Sync Cord Transmitter 50 cm | code N° 11071

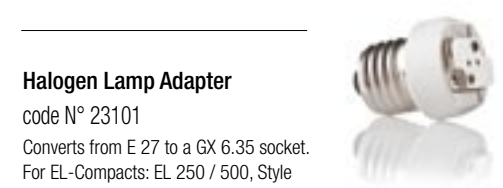
Camera pc > 2.5 jack
To connect the EL-Skyport Transmitter, or the FRC Transmitter with the camera pc.



Sync Cord Transmitter 30 cm

code N° 40203 Cord

Camera pc > 2.5 jack
This cable connects the EL-Skyport Transmitter or the Prolinca IR-Transmitter with the camera PC socket.



Halogen Lamp Adapter

code N° 23101

Converts from E 27 to a GX 6.35 socket. For EL-Compacts: EL 250 / 500, Style Compacts, former Flashheads EL-S, EL -T and actual Mini S / A Heads. Note: Once the adapter is fitted use only with the following lamps: For Compacts 23034, for Flashheads 23022 or 23005.



Prolinca IR-Transmitter | code N° 40203



Power Specifications



Power Specifications

Compacts Starters

	D-Lite-it 2	D-Lite-it 4
Flash energy (max)	200 J (Ws)	400 J (Ws)
F-Stop (1m (3.28 ft), 100 ISO, reflector 55°)	45.3 f-stop (149 guide n°)	64.3 f-stop (211 guide n°)
Flash energy steps	5 f-stop	5 f-stop
Flash energy range	12-200 J (Ws)	25-400 J (Ws)
Flash energy adjustment	1/10 f-stop	
Recycling time (230 V)	min: 0.2 s max: 0.6 s	min: 0.35 s max: 1.2 s
Recycling time (115 V)	min: 0.2 s max: 0.8 s	min: 0.35 s max: 1.6 s
Flash duration (t0.5)	1/1200 s	1/800 s
Power stability	± 0.5%	
Auto Power Dumping	Adjusts power settings automatically	
Voltage	Multi voltage, 90-260 V	
Modelling lamp E27	110 V: 100 W / 90 V /// 230 V: 100 W / 196 V (effective 150 W)	
Modelling lamp mode	Proportional, full, low, off	
Flashtube (n° 24009)	Plug-in, user replaceable	
Umbrella fitting	Centred tube, for EL-umbrellas ø 7 mm. Stand bracket with extra umbrella fitting for larger umbrella shafts	
Sync voltage	5 V (compatible with all cameras)	
Sync socket	3.5 mm Jack	
Max power consumption (115 V / 60 hz)	160 W (during charge: 850 VA)	
Max power consumption (230 V / 50 hz)	140 W (during charge: 1200 VA)	
EL-Skyport (Built-in)	Integrated transceiver, 4 Groups, 4 Frequency Channels	
Fan Cooled	Microprocessor controlled fan, plus thermal cut-out. The fan will automatically switch on at higher temperatures	
Dimensions (with 16cm reflector)	26 x 19 x 14 cm (10 x 7.5 x 5.5 in)	
Weight	1.3 kg (2.8 lb)	1.5 kg (3.3 lb)
D-Lite-it	20483.1	20484.1

Compacts Entry Professional

	BXRI 250	BXRI 500
Flash power	250 J(Ws)	500 J(Ws)
Power supply	90-260 V	90-260 V
F-stop, 1m, 100 ISO, with reflector 48°	64	90
Power range	16-250 J(Ws)	31-500 J(Ws)
Variable flash power f-stop	1/16 - 1/1 f-stop	
Recycling time, min. / max. (230 V)	0.29 s / 0.73 s	0.36 s / 1.13 s
Recycling time, min. / max. (115 V)	0.27 s / 1.02 s	0.34 s / 1.45 s
Colour temperature max. power	5500 °K	
Flash duration (t 0,5) 1/1	1/2762 s	1/1558 s
Voltage stabilisation	± 0.05 f-stop Maximum stability for digital imaging	
Sync voltage	5 V, maximum compatibility with digital cameras	
Modelling lamp	100 W / E27 (effective 150 W)	
Fan cooled	Microprocessor controlled fan, plus thermal cut-out	
EL-Skyport (Built-in)	Integrated transceiver module, 4 groups 8 frequencies	
Dimensions	26 x 19 x 14 cm	
Weight	1.85 kg	2.05 kg
BXRi	N° 20460.1	N° 20461.1

Power Specifications

Compacts Professional

	Style 300 RX	Style 600 RX	Style 1200 RX
Joule / WS; max.	300	600	1200
F-stop, 1m, 100 ISO, 1/250 s; Reflector 48°	64.1	90.1	128.1
Power range; Ws	9 - 300	18 - 600	37 - 1200
Variable flash power, in f-stop stepless	6 f-stop 1/32 - 1/1		
Recycling, min. / max. 230 V	0.2 - 0.6 s	0.22 - 1.0 s	0.25 - 1.8 s
Recycling, min. / max. 115 V	0.25 - 0.8 s	0.3 - 1.5 s	0.4 - 2.9 s
Flash duration at t 0,5	1/2850 s	1/2050 s	1/1450 s
Voltage stabilization	+/- 0.5 %		
Sync voltage	5 V		
Modelling lamp 230 V	250 W E 27-230 V		300 W GX 6.35-230 V
Modelling lamp 115 V USA	150 W - BA 15 D		250 W - BA 15 D
Flashtube code	24029		24068
Interface for Mac and PC / EL-Skyport	All models		
Socket for EL-Skyport & Remote control	All models		
Plug-in flashtube	All models		
Fan cooled	1 fan		2 fans
Dimensions: length x diameter in cm	21 x 14		30 x 14
Weight in kg	2.3	2.6	3.45
Code 230 V 50 - 60 Hz	20625	20626	20627
Code 115 V - 140 V 50 - 60 Hz	20725	20726	20727

Digital RX Power Packs

	Digital 1200 RX	Digital 2400 RX
Joule / Ws	1200	2400
F-stop 1m ISO 100; 1 / 125 s; Reflector 48°	128	180
Recycling min. / max. 230 V / fast	0.24 – 1.0 s	0.4 – 1.9 s
Recycling min. / max. 230 V / slow	0.35 – 1.9 s	0.55 – 3.6 s
Flash duration t 0.5, max. power, 2 x A heads	1/3400 s	1/1700 s
Flash duration t 0.5, max. power, 1x Digital S head	1/1200 s	1/600 s
Power range in Ws, 6 f-stop	37 – 1200	75 – 2400
Interface for Mac and PC / EL-Skyport	All models	
Socket for EL-Skyport & Remote control	All models	
Sync voltage	5 V	
Voltage stabilization	+ - 0.5%	
Fan cooled	All models	
Modelling lamp, proportional / free / off	All models	
Charge ready beep / on-off	All models	
Photocell / on-off	All models	
ADF, auto dump function	All models	
Dimensions in cm	22 x 13 x 23	22 x 13 x 32
Lightweight in kg	4.6	6.6
Code 230 V 50 - 60 Hz	10256	10258
Code 115 - 130 V 50 - 60 Hz	10255	10257

Power Specifications

Digital AS

	Digital 3000 AS	Digital 1500 AS
Joule / Ws 230 V min. / max.	62 - 3000	31 - 1500
F-stop 1m ISO 100; 1 / 250 s; Reflector 48° 230 V	180.3	128.6
Recycling rapid/medium, max. power 230 V	3.5 s / 4.5 s	1.5 s / 2.1 s
Flash duration t 0.5 max. power, 3 S heads connected	1/1150 s	1/1850 s
Memory	Retains last setting	
IR Remote control	All functions, 8 channel settings	
Power range	6.6 f-stop	
Total power asymmetry	56 individual power settings for each head	
Sync voltage	12 V	
Ready beep on / off	All models	
Photocell on / off	All models	
Dimensions in cm	49 x 14 x 32	49 x 14 x 27
Weight in kg	11.65	8.6
Code 230 V 50 - 60 Hz	10254	10248
Code 115 - 130 V 50 - 60 Hz	10253	10247

Professional Flashheads

	Digital SEE	Digital SE	Digital S	A 3000 N Speed	X 6000 N Twin	Digital RE
Output in Joule / Ws	2400	3000	4000	3000	2x 3000	3000
Modelling lamp 230 V Modelling lamp 110 V	300 W / GX 6.35				650 W GX 6.35	500 W or 625 W / R7s
Modelling lamp on / off	All models					
Safety Fuse 230 V	2.5 AF					4 AF
Safety Fuse 110 V	5 AF					8AF
Flashtube	Digital X	Digital XL	Digital XXL	Speed	Twin Tube	Linear
Centred umbrella holder	All models					
Stand adapter	All models incl. additional umbrella holder					
Cooling fan	All models					
Bayonet, breech-lock-ring	All models					Barndoor support
Weight incl. 5 m flash cable	2.4	2.4	2.4	2.4	3.3	2.5
Dimensions in cm	22 x 14					9 x 37.5
Code 230 V 50-60 Hz	20172	20174	20150	20168	20182	20170
Code 110 V 50-60 Hz	20173	20175	20149	20167	20183	20169
Code Flashtube	24034	24045	24037	24053	2 x 24069	24022

Budget Flashheads

	Mini S	Mini A Speed	Twin X 4
Output in Joule / Ws	2400		2 x 2400
Modelling lamp 230 V	250 W / E27		300 W / GX 6.35
Modelling lamp 110 V	150 W / E27		
Modelling lamp on / off	All models		
Safety Fuse 230 V	2.5 AF		2.5 AF
Safety Fuse 110 V	2 AF		5 AF
Flashtube	Omega	Speed	Twin Tube
Centred umbrella holder	All models		
Stand adapter	All models incl. additional umbrella holder		
Cooling fan	All models		
Bayonet, breech-lock-ring	All models since 1974		
Weight incl. 5 m flash cable	2.4		3.3
Dimensions in cm	22 x 13.5		22 x 14
Code 230 V 50-60 Hz	20106	20104	20180
Code 110 V 50-60 Hz	20105	20103	20181
Code Flashtube	24034	24053	2x 24035

Power Specifications

Ringflash

	RF 3000	Ranger RX-RF 1500
Max. flash power	3000 Ws / all EL power packs	1500 Ws / only Ranger RX
Compatible power packs	Digital RX 1200 & 2400, Digital AS 1500 & 3000, Classic 1500 & 3000, Micro AS 1500 & 3000	Ranger RX, Ranger RX Speed, Ranger RX Speed AS and Ranger Quadra with Head Adapter
Flash duration at full power $t 0.5 - t 0.1$	1/2600 – 1/935 (Digital RX 1200)	1/2600 – 1/935 (Ranger RX)
Flash duration at min. power $t 0.5 - t 0.1$	1/1920 – 1/760 (Digital RX 1200)	1/1920 – 1/760 (Ranger RX)
F-stop 2 m, ISO 100, at full power, 1/500 s	22.5 (Digital RX 1200)	22.5 (Ranger RX)
Color temperature at full power	5000 °K	
Inner diameter	10 cm	
Outer diameter	20 cm	
Cable length	5 m	2 m
Camera / Tripod adaption	1/4" // 1/4" and 3/8"	
Dimensions (L x W x H)	23 x 20 x 32 cm	
Weight	Including cable, 1.9 kg	1.8 kg
Supplied with	UV coated protection glass filter / flash cable	
Matt glass diffuser, optional accessory	402.013	
UV coated protection glass filter, spare part	402.012	
Ringflash 120 /230 V	20494	20493

N.B. Prevent overheating, cool down after maximum 25 flashes

Ringflash

	Ranger Quadra RF	Ranger Quadra RF ECO
Max. flash power	400 Ws / only Ranger Quadra RX	
Compatible power packs	Ranger Quadra AS Ranger Quadra RX - AS	
Flash duration at full power $t 0.5 - t 0.1$	Plug A: 1/1950 - 1/800 Plug B: 1/4500 - 1/1700	Plug A: 1/1000 – 1/500 Plug B: 1/2500 – 1/1200
Flash duration at min. power $t 0.5 - t 0.1$	Plug A: 1/1400 - 1/550 Plug B: 1/2700 - 1/1200	Plug A: 1/600 – 1/300 Plug B: 1/1400 – 1/800
F-stop 2 m, ISO 100, at full power	16.0	11.8 (-0.5 f-stop w. diffuser)
Color temperature at full power	5000 °K	
Inner diameter	10 cm	9.5 cm
Outer diameter	20 cm	
Cable length	2 m	
Camera / Tripod adaption	1/4" // 1/4" and 3/8"	
Dimensions (L x W x H)	23 x 20 x 32 cm	21 x 20 x 21
Weight including cable	1.5 kg	1 kg
Matt glass diffuser	Optional, 402.013	included white Plexiglass diffuser
UV coated protection glass filter	Optional spare part, 402.012	-
Supplied with	UV coated protection glass filter / 2 m flash cable / 4 pole "Action" flashtube	UV coated / plastic protection filter / detachable 2 m flash cable / 2 pole standard flashtube
RQ Ringflash version Ranger Quadra	20495	20492

N.B. Prevent overheating, cool down after maximum 25 flashes

Power Specifications

Battery Flash System	Ranger RX		Ranger RX Speed	Ranger RX Speed AS
Joule / WS; max.	1100			
Power distribution	Symmetrical		Asymmetrical	
Interface for Computer and Hand Remote	All RX models; requires optional accessories + EL-Skyport Software			
F-stop, 2 m, 100 ISO, 1/250 s; Reflector 48°	64		64 at 100% ; 45 at 66% 32 at 33%	
Power range; Ws	17 – 1100		100%: 17 – 1100 66%: A output: 11.5 – 733 33%: B output: 5.7- 366	
Power range in f-stop	7 / 1.5 – 7.5		8.5	
Recycling, fast at min. / max. power	0.5 s / 5.5 s	0.3 s / 3 s	A output: fast 0.3 s / 3 s B output: fast 0.19 s / 1.2 s	
Recycling slow at min. / max. power	0.9 s / 14 s	0.45 s / 5.5 s	A output: slow 0.45 s / 5.5 s B output: slow 0.22 s / 1.9 s	
Flash duration at t 0,5; 1 / 2 A heads	1/2300 s / 1/4310 s		A output: 1/2300 s / 1/4310 s B output: 1/5120 s	
Flash duration at t 0,5; 1 / 2 S heads	1/1160 s / 1/2250 s		A output: 1/1250 s / 1/2250 s B output only: 1/2310 s	
*Flashes out of one charged Battery at min. power, slow/fast recycle	3800 / 2600	5100 / 3700		
*Flashes, out of one charged Battery at max. power, slow/fast recycle	140 / 110	250 / 195		
Sync voltage	5 VDC			
Stabilisation	+/- 1 V			
**Battery (gel-electrolyte)	12 V / 7 Ah	12 V / 12 Ah		
Modelling lamp: ***1 head connected	2 x 50 W / 12 V or ***1 x 100 W / 12 V			
Standard charger: recharge time, approx.	3 h	5 h		
Quick charger: recharge time, approx.	Do not use	3 h		
Dimensions in cm	19 x 14 x 24	19 x 14 x 28		
Weight in kg, incl. Battery	6.5	8		
Ranger pack, included parts	10263 incl.: 19290 + 11075 + 19289 + 19293 + 19374	10265 incl.: 19280 + 11075 + 19289 + 19283 + 19374	10267 incl.: 19280 + 11075 + 19289 + 19283 + 19374	

* Note: The number of flashes, recharging time and battery life, may vary from battery to battery!!

**Note: Used batteries may need to be recycled! Check your local regulations!

*** Note: Deliveries for 110 V countries includes Charger 19293

Ranger Heads	Ranger S	Ranger A Speed	Ringflash 1500
Output in Joule / Ws	2400		1500
Modelling lamp	50 W 12 V		-
Modelling lamp timer on / off	15 & 30 seconds		-
Safety Fuse	5AF		-
Flashtube	Omega	Speed	4 pole - Speed
Centred umbrella holder	All models		-
Stand adapter	All models		3/8 – 1/4
Bayonet, breech-lock-ring	All models since 1974		-
Weight incl. 3 m flash cable	2.4 kg		1.8 kg / 2m cable
Dimensions in cm	22 x 13.5 cm		23 x 20 x 32 cm
Code	20100	20101	20493
Code Flashtube	24034	24053	

Power Specifications

Ranger RX / F- Stop Power Table

F-Stop at 2m, 100 ISO, Ranger S Head + Range RX Pack

26149	Maxi Spot Reflector 29°	90.1
26147	Maxi Lite Reflector 43°	64.6
26137	High Performance Reflector 48°	64.1
26141	Standard Reflector 50°	45.8
26140	Compact Reflector 65°	45.2
26144	Grid Reflector 60°	45.0
26164	Varistar Reflector 90°	32.6
26143	Wide Reflector 90°	32.0

Display Power Equivalents

7.5	1100 Ws
7.0	780 Ws
6.5	550 Ws
6.0	390 Ws
5.5	275 Ws
5.0	195 Ws
4.5	137 Ws
4.0	98 Ws
3.5	68 Ws
2.5	34 Ws
1.5	17 Ws

Battery Flash System

Ranger Quadra RX

Flash power	400 J(Ws)
F-stop, 1m, 100 ISO, with reflector 48°	64.5
Power range	100% A Output: 25 – 400 J(Ws) 33% B Output: 8.2-132 J(Ws)
Variable flash power	6.6 f-stop / 8.2 - 400 Ws
Recycling, 100% FAST at min. / max. power (A or A+B Output)	0.35 s / 2.2 s
Recycling, 100% SLOW at min. / max. power (A or A+B Output)	0.8 s / 6 s
Recycling, 33% FAST at min. / max. power (B Output only)	0.2 s / 0.8 s
Recycling, 33% SLOW at min. / max. power (B Output only)	0.35 s / 2.3 s
Flash duration (t 0,5) RQ Head S / A, max. power:	A Output (100%) B Output (33%) A+B Output (100%)
	1/1200 s // 1/2800 s 1/3000 s // 1/5700 s 1/1500 s // 1/4000 s
Colour temperature 1/1 power (Output A / B)	5560 °K
Flashes out of one charged battery at min. power, SLOW / FAST recycle	2000 / 1500
Flashes out of one charged battery at max. power, SLOW / FAST recycle	150 / 110
Voltage stabilisation	0.05 f-stop
Sync voltage	5 V
Battery (gel-electrolyte)	12 V / 3.6 Ah
Pilot light: LED	20 W (approx. 50 W Halogen)
Quick charger: recharging time	2 h
EL-Skyport (Built-in)	Integrated transceiver module, 4 groups - 8 frequencies, RX computer remote control, wireless firmware update
Dimensions: Ranger Quadra power pack including battery // Head (without tilt bracket)	15 x 8.5 x 21 cm // 9 x 8 x 11 cm
Weight: Ranger Quadra unit including battery // battery box // Head // head cable (2.5m)	3 // 1.6 // 0.25 // 0.4 Kg
Code number: Ranger Quadra, battery box, sync cord, charger, shoulder strap Ranger Quadra A / S Head, 2.5m flash cable, Reflector 13.5cm, Multifunction Cap Ranger Quadra Spare battery box	10261.1 S Head - 20107 // A Head - 20110 19294

Power Specifications

Continuous Light

	Scanlite (1000 W)	Minilite (250 W)
Aperture: 2m / 100 ISO 1/30 s, Ref. 48°	8.6	5.6
Aperture with Pyrex dome mat	8.0	-
Lux at 1000 W	6500	-
Lux at 250 W	-	1050
Colour Temperature °K	3200°K	
Bayonet, breech-lock-ring	All models since 1974	
Modelling lamps, configurations	300, 650, 1000 / GX 6.35	100, 250 W / E27
Cooling fan	All models	
Weight in kg	1.2 / incl. cable 1.7	1.1
Dimensions in cm	14x18 / incl. glass dome 22	22 x 13
Code 230 V 50 - 60 Hz incl. lamp	20996-300 W / 20997-650 W / 20994-1000 W	20651
Code 115 V 50 - 60 Hz exclude- / incl. lamp	20993-1000 W	-

Elinchrom Spots

Elinchrom Spots	Minispot	ZoomSpot 18°-36°	Fiber Lite
Diameter of illumination, distance 2 m, min. / max.	1 m	0.7 / 1.3 m	Dist. 5 cm ø 4 cm Dist. 10 cm ø 7 cm
Aperture from 2 m, 100 ISO, t 1/125, Digital RX - 1200 J at max. power, spot / wide	11.5	22.6 / 16.7	Dist. 10 cm with Lens / 64.9 f
Code 230 V 50 - 60 Hz	26420	26481	26430 / 31
Code 115 - 130 V 50 - 60 Hz			
Max. flash power in Joule / Ws	3000		
Max. modelling light	300 / 650 W Note: Enclosing accessories can build up excessive heat!		
Dimensions: L x W x H in cm	26 x 12	45 x 15 x 15	-
Weight in kg	0.6	4.75	-

Rotalux Softbox

Code n°	Size / cm	Coverage without diffusers	Coverage with diffusers	Depth / cm	Weight / kg
26178	Rotalux Square 70 x 70 cm	83°	69°	32 cm	1.07
26179	Rotalux Square 100 x 100 cm	81°	69°	42 cm	1.42
26175	Rotalux Recta 60 x 80 cm	82°	68°	30 cm	1.30
26176	Rotalux Recta 90 x 110 cm	81°	71°	42 cm	1.55
26187	Rotalux DEEP Octa 70 cm	68°	60°	40 cm	0.80
26185	Rotalux DEEP Octa 100 cm	73°	65°	65 cm	1.50
26183	Rotalux Octa 100 cm	82°	68°	32 cm	1.22
26184	Rotalux Octa 135 cm	81°	75°	42 cm	1.55
26186	Rotalux Octa 175 cm	82°	60°	50 cm	2.45
26180	Rotalux Strip 30 x 90 cm	71° / 82°	66° / 69°	25 cm	0.97
26181	Rotalux Strip 50 x 130 cm	64° / 87°	59° / 69°	42 cm	1.45

Power Specifications

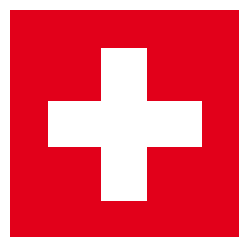
Indirect Softlites

	Code n°	Angle	Depth	Weight (including Carrying bag)
EL Recta Lite 72 x 175 cm vert. / horizontal	26154	56° / 77°	57 cm	4 kg
Front Diff. (without outer diffuser)	26224	46° / 95°		
EL Strip Lite 33 x 175 cm vert. / horizontal	26160	64° / 73	57 cm	3.5 kg
Front Diff. (without outer diffuser)	26230	48° / 100°		
EL Octa Lite 190 cm	26158	71°	57 cm	5 kg
Front Diff. (without outer diffuser)	26228	82°		
EL Quadra Lite 145 x 145cm	26156	73°	57 cm	4.5 kg
Front Diff. (without outer diffuser)	26226	75°		
Round Diff. 125 cm	26236	66°		

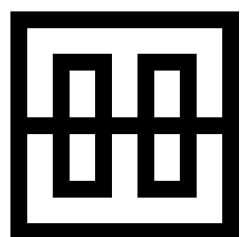
NB. Without diffusers the effect is of a huge normal reflector.

Modelling Lamps 230 V

Code n°	Power	Lumen	Av. Life	Type	Socket	To use with
23044	50 W /12 V	900	3000 h	Halogen	GX 6.35	Ranger S, Ranger A, Free Lite S, FreeLite A
23046	100 W /12V	2200	2000 h	Halogen	GX 6.35	Ranger S, Ranger A, Free Lite S, FreeLite A
23002	100 W	2700	500 h	Krypton	E 27	EL 250, 250 S, 500, 500 S, 22, 23, 66, S, T, Box Lite, Style 300 / 600, Style FX 100 / 400, MiniLite, BXRT, D-Lite-it
23035	150 W	2400	2000 h	Halogen	E 27	Style BX 100 / 400
23004	250 W	4000	500 h	Halogen	E 14	EL A
23005	650 W	20000	45 h	Halogen	GX 6.35	EL X6000N, Spot Lite 3000, X 8000, X, ScanLite
23018	250 W	4500	2000 h	Halogen	E 27	EL 66, S, T, Style S & RX 300/600, Mini S/A, MiniLite
23020	500 W	9000	500 h	Halogen	E 14	EL A
23022	300 W	8500	45 h	Halogen	GX 6.35	EL S1500N, S3000N, S1500, S3000, A3000N, A4000 A2/4, Style S / RX 1200, Digital SEE, SE, S, ScanLite
23029	625 W	9500	2000 h	Halogen	R7 s	EL R3000, Mini R Head, R2000, R2, R4
23052	1000 W	27500	75 h	Halogen	GX 6.35	ScanLite
23034	200 W	4000	45 h	Halogen	GX 6.35	EI 1000, 750 S, 1500 S, 1500 R



elinchrom[®]
creative image lighting technology



Starter Compacts



D-Lite it 2 20483.1
D-Lite it 4 20484.2
Multivoltage



EL-Skyport Transmitter Eco 19349

Entry Pro Compacts



BX 250 Ri 20480.1
BX 500 Ri 20481.1
Multivoltage - Skyport integrated



EL-Skyport Transmitter Speed 19350

Professional RX Compacts



Style RX 300
230 V. 20695
110 V. 20725

Style RX 600
230 V. 20696
110 V. 20726

Style RX 1200
230 V. 20697
110 V. 20727



EL-Skyport RX Trigger Set 19359
EL-Skyport Computer Remote / Trigger Set 19359

Battery Flash System



Ranger RX Speed
10265

Ranger RX Speed
10267



EL-Skyport Transceiver
Adapter 19374

EL-Skyport Computer
Remote / Trigger Set 19359

Flash Heads, for Powerpacks

also compatible with Ranger RX & Ranger Quadra with adapter

Entry Level Flash Heads



Mini S
230V / 20106
110V / 20105



Mini A Speed
230V / 20104
110V / 20103

Pro Flash Head



Digital SEE
230V / 20172
110V / 20173



Digital SE
230V / 20174
110V / 20175

H.D. Pro Flash Heads



Digital S
230V / 20150
110V / 20149



A 3000 N Speed
230V / 20169
110V / 20167

Power Flash



Twin X4



Standard Reflector
21 cm 50° 26141



Compact Reflector
21 cm 65° 26140



Grid Reflector
18 cm 60° 26144



High Performance
Reflector 28 cm 48° 26137



Background Reflector
26150



Varistar Reflector
24 cm 90° 26164



Reflector 16 cm 90°
26143



Maxi Spot Reflector
40 cm 29° 26149



Maxi Lite Reflector
40 cm 43° 26147



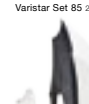
Grid 21 cm
30° 26052
20° 26053
12° 26054
8° 26055



Grid 18 cm
30° 26100
20° 26101
12° 26102



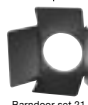
Colour Gels 21 cm
26243



Varistar Set 105 26385
Varistar Set 85 26386



Bayonet Reflector Support Set
22361



Barndoor set 21
cm 26037



Polarizing Filter 21 cm
26244



Colour Gels 21 cm
26243



Rotalux Square 70 x 70 cm
Standard 26178
Hooded diffuser 26322



Rotalux Square 100 x 100 cm
Standard 26179
Hooded diffuser 26323



Rotalux Recta 60 x 80 cm
Standard 26175
Hooded diffuser 26318



Rotalux Recta 90 x 110 cm
Standard 26176
Hooded diffuser 26319



Rotalux Strip 35 x 90 cm
Standard 26180
Hooded diffuser 26324



Rotalux Strip 50 x 130 cm
Standard 26181
Hooded diffuser 26325



Rotalux Deep Indirect 150 cm
Standard 26188
Hooded diffuser 26771



EL Octa 190 cm
26158



EL Quadra 145 x 145
cm 26156



EL Recta 72 x 175 cm
26154



EL Strip 33 x 175 cm
26160



Stand / Umbrella Set To Go 20564
2 stands, 85-235 cm
2 Umbrellas (silver + translucent)
& Carrying bag



Stand Set 30162
2 stands, 85-235 cm
& Carrying bag



Stand Set A 30161
3 stands, 85-235 cm
& Carrying bag

Power Pack System

Ranger RX
10263

Ranger Quadra AS
10261.1

Digital RX 2400
230V : 10258
110V : 10257

Digital RX 1200
230 V : 10256
110 V : 10255

Digital 1500 AS
230 V : 10248
110 V : 10247

Digital 3000 AS
230 V : 10254
110 V : 10253

Classic 3000
230 V : 10226
110 V : 10225

EL-Skyport RX
Trigger Set 19359

EL-Skyport Transmitter Speed 10250
EL-Skyport Transmitter Eco 19349

EL-Skyport RX Trigger Set 19358

EL-Skyport Computer Remote / Trigger Set 19359

EL-Skyport Universal Speed Set 19357

Ranger Snappy
19269

Car Battery Charger
11093

RQ 13.5 cm
26145

RQ grid 18 cm
26056

RQ Portatile
Square 40 cm 26151

RQ Portatile
Octa 26000

Ranger Quadra Head
S: 20107 // A: 20110

RQ Ringflash ECO
20492

RQ Ringflash
20495

RQ Ranger Snappy
19286

Adapt. Cable RQ -
EL Flasheads 11097

Adapter cable RQ - Ranger S/A Heads
11036

RQ Extension Cable 5 m / 11003
RQ Extension Cable 10 m / 11004

Heads

X 6000 N
230V : 20182
110V : 20183

Diffusing, filter
holder & protection
cap 26100

Grid 18 cm
30" 26100
20" 26101
12" 26102

EL reflector adapter
26339

RQ Flashhead cable
2.5m : 11000
5m : 11001
10m : 11002

Digital RE
230V : 20170
110V : 20169

Ringflash 3000
230V & 110V : 20494

Fresnel Spot SPP 6000

Effect Lights

Softlite White*
70 cm 82" 26189

Softlite Silver*
70 cm 84" 26187

Softlite Silver*
44 cm 55" 26186

Softlite White*
44 cm 80" 26188

Diffuser Tissue
For 70 cm Softlite: 26235
For 44 cm Softlite: 26232

Snoot with Snoot
grid 15" 26081

Mini Spot Lite with filter holder,
lens & Gobos set 26420

Zoom Spot 18"-36" 26481

Fibre Optic Kit
Kit with two glass cables 26430
Kit with one glass cables 26431

Set of 5 Gobos Ø 52 mm
26418

Snoot Grid set 3
26427

Zoom Spot Accessory Set
26484

Budget Umbrella Silver
83 cm 26353

Pro Umbrella White
85 cm 26372

Pro Umbrella White
105 cm 26375

Pro Umbrella Gold
105 cm 26377

Pro Umbrella Silver/Gold
105 cm 26376

Deflectors
Set of 4: Gold-Silver-Translucent-Frost 14 cm
26310

Rotalux Octa 100 cm
Standard 26183
Hooded diffuser 26326

Rotalux Octa 135 cm
Standard 26184
Hooded diffuser 26327

Rotalux Octa 175 cm
Standard 26186
Hooded diffuser 26320

Rotalux Deep Octa 70 cm
Standard 26187
Hooded diffuser 26370

Rotalux Deep Octa 100 cm
Standard 26185
Hooded diffuser 26328

Budget Umbrella Translucent
83 cm 26351

Pro Umbrella Translucent
85 cm 26371

Pro Umbrella Translucent
105 cm 26374

Pro Umbrella Silver
105 cm 26361

Pro Umbrella Bronze
105 cm 26379

Pro Umbrella Blue
105 cm 26380

Stand Set 2x 52-190cm 31050
Stand 52-190cm 31048

Boom Arm 63-156cm
31049

Tripod Air Set 102-264 cm 31051
2x Tripod 102-264 cm,
1x EL-Carrying bag 33222

Elinchrom Case
For 3 compacts 33209
For Digital RX & Ranger RX 33215

EL-Ranger Quadra travelling case
For 1 generator, 2 batteries, 2 heads
cables, 5 33215

Vacuum Grip Ø120mm 22900

EL Multi-Table Complete 19228
Additional tray 19226

Polystand 31045



