



***D-Lite it***

# STUDIO FLASH SYSTEM

The D-Lite it studio flash system is the entry range into the Elinchrom studio flash family.

Ideal for small business applications, portraiture, for anyone interested in the art and creativity of lighting, these swiss designed and tested units will not only give many years of satisfactory service and pleasure, but allow the upgrading to more advanced units as necessary.

## D-Lite-it What's NEW Added Values

- EL-Skyport Receiver built-in for triggering and Frequency Channel settings.
- EL-Skyport with 4 Frequency Channels, compatible with the ELS Transmitter and ECO Transmitter.
- EL-Skyport with 4 Groups, available with the EL Skyport Transmitter and Transmitter Speed.
- EL-Skyport Speed Sync Mode, for fast synchronisation up to 1/250 s, compatible with the ECO and Transmitter Speed.
- Red Eye pre-flash management system
- New housing re-design, robust, function and elegance in one go.
- New reflector bayonet with speed locking, accepts Rotalux softboxes up to 135 cm.
- New larger, rubberised handle with spare fuse storage.
- New pro stand bracket with extra umbrella fitting for larger umbrella shafts.



# ACCESSORIES



## EL-Skyport Transmitter ECO

**n°19349**

The EL-Skyport (ELS) Transmitter ECO is part of every D-Lite it Set and will be available soon as a single item, or just as a spare Transmitter for the EL Skyport Universal Receiver and Elinchrom flash units with build-in EL-Skyport Receiver, like D-lite it 2 / 4, BXRi 250 / 500, Ranger Quadra AS.



## Snoot & Grid

**n°26061**

A traditional accessory, designed to give an approx. 15° controlled spot of light, with a hard shadow effect. Comes with a Snoot Grid. Grids of various honeycomb sizes deliver a sharply defined concentrated light source of exceptional quality. The grid is an easy retro fit, with clips to grip the interior of the snoot.



## Reflector Grid Set 18 cm

**n°26060**

This Set includes one Grid Reflector and one Grid 18 cm. The grid limits light spread and offers sharper shadows. This Reflector can be used for direct or indirect lighting or can be combined with silver, gold or translucent EL-Umbrellas.

## Polystand

**n°31045**

With the PolyStand unique sliding column and adjustable permanently mounted boom a head or accessory can be placed up to 335 cm, or as low as 5 cm from floor level.



## Varistar set 85 & 105 cm

**85cm: n°26386 105cm: n°26385**

The multitasking umbrella for in and out of studio use. Easy to erect, lightweight and fits into most Elinchrom carrying bags. The umbrella comes with protective bag and the Varistar Set includes one VariStar Reflector 24 cm (26164).



## Portalite Softbox 66 cm

**n°26129**

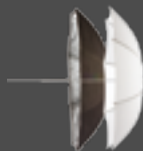
The new Portalite diffuser and black-silver tissue are the same quality materials which Elinchrom uses for Rotalux but priced to budget. The EL Speed-Ring and rods are re-designed and the result is a softbox better stability and is easier to assemble.



## Umbrella Set / Silver-Translucent 83 cm

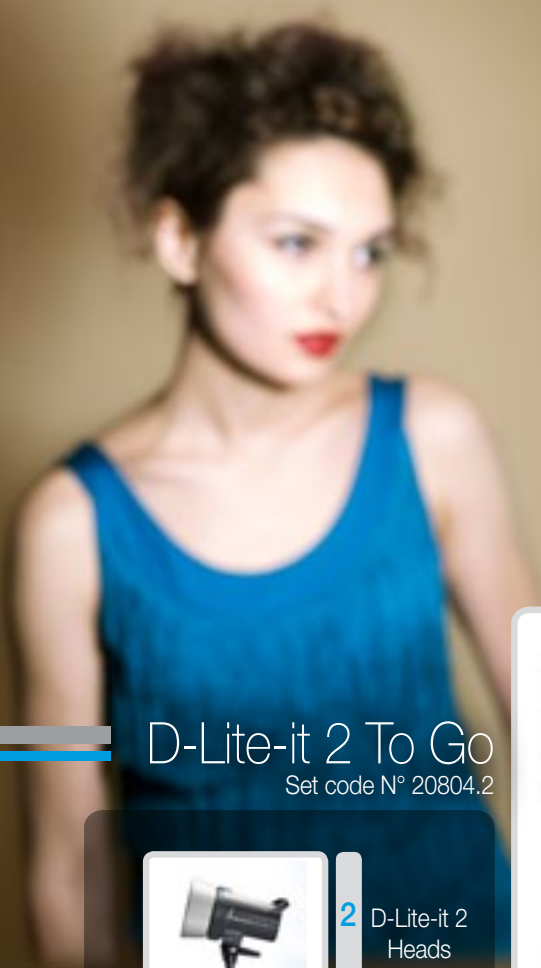
**n°26062**

The Umbrella Set includes 1x Umbrella translucent & 1x Umbrella silver 83 cm with protection sleeves. Umbrellas spread the light. Silver for „mid crisp“ shadow effects.





# TO GO SETS



## D-Lite-it 2 To Go

Set code N° 20804.2



2 D-Lite-it 2 Heads



+ included accessories +



2 Portalite Softbox



2 Protective Hood



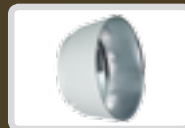
1 Tripod Set



1 ELS Transmitter ECO



1 Tube Bag - Compacts



1 Umbrella Wide Reflector 90° 16 cm

## D-Lite-it 2 / 4 To Go

Set code N° 20803.2



1 D-Lite-it 2 Heads



1 D-Lite-it 4 Heads

+ included accessories +



1 ELS Transmitter ECO



2 Protective Hood



1 Tripod Umbrella Set



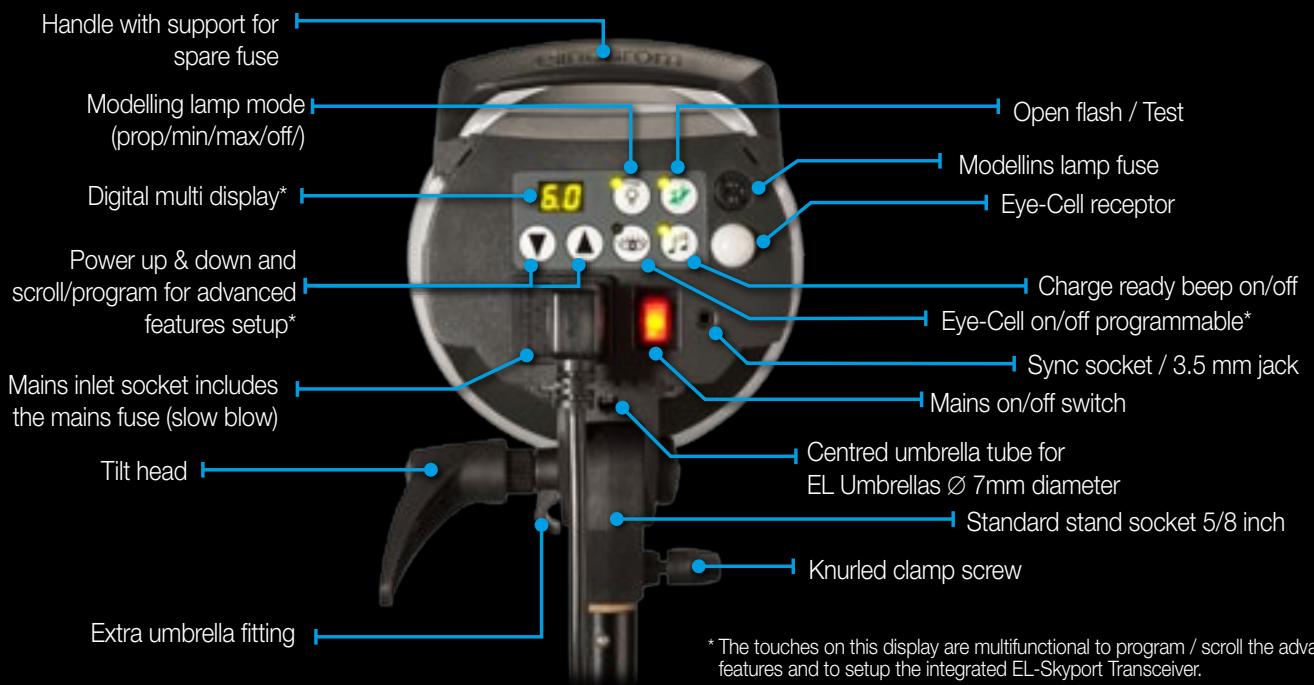
1 Tube Bag - Compacts

# Technical Data

	D-Lite it 2	D-Lite it 4
Flash energy (max)	200 J (Ws)	400 J (Ws)
F-Stop (1m (3.28 ft), 100 ISO, reflector 55°)	45.3 f-stop (149 guiden°)	64.3 f-stop (211 guiden°)
Flash energy steps	5 f-stop	5 f-stop
Flash energy range	12-200 J (Ws)	25-400 J (Ws)
Flash energy adjustment	1/10 f-stop	
Recycling time (230 V)	min: 0.2 s max: 0.6 s	min: 0.35 s max: 1.2 s
Recycling time (115 V)	min: 0.2 s max: 0.8 s	min: 0.35 s max: 1.6 s
Flash duration (t <sub>0.5</sub> )	1/1200 s	1/800 s
Power stability	± 0.5%	
Auto Power Dumping	Adjusts power settings automatically	
Voltage	Multi voltage, 90-260 V	
Modelling lamp E27	110 V: 100 W / 90 V /// 230 V: 100 W / 196 V (effective 150 W)	
Modelling lamp mode	Proportional, full, low, off	
Flashtube (n° 24009)	Plug-in, user replaceable	
Umbrella fitting	Centred tube, for EL-umbrellas ø 7 mm. Stand bracket with extra umbrella fitting for larger umbrella shafts	
Sync voltage	5 V (compatible with all cameras)	
Sync socket	3.5 mm Jack	
Max power consumption (115 V / 60 hz)	160 W (during charge: 850 VA)	
Max power consumption (230 V / 50 hz)	140 W (during charge: 1200 VA)	
EL-Skyport (Wireless triggering)	Integrated transceiver, 4 Groups, 4 Frequency Channels	
Fan Cooled	Microprocessor controlled fan, plus thermal cut-out. The fan will automatically switch on at higher temperatures	
Dimensions	26 x 19 x 14 cm (10 x 7.5 x 5.5 in)	
Weight	1.3 kg (2.8 lb)	1.5 kg (3.3 lb)
D-Lite-it	20483.1	20484.1

\* Tolerances of specifications and components conform to IEC and CE standards.  
Technical data subject to change. No guarantee for misprints.  
The listed values can differ due to tolerances in components, or measuring instruments.

## Control Panel



\* The touches on this display are multifunctional to program / scroll the advanced features and to setup the integrated EL-Skyport Transceiver.

