

Lastolite

Professional



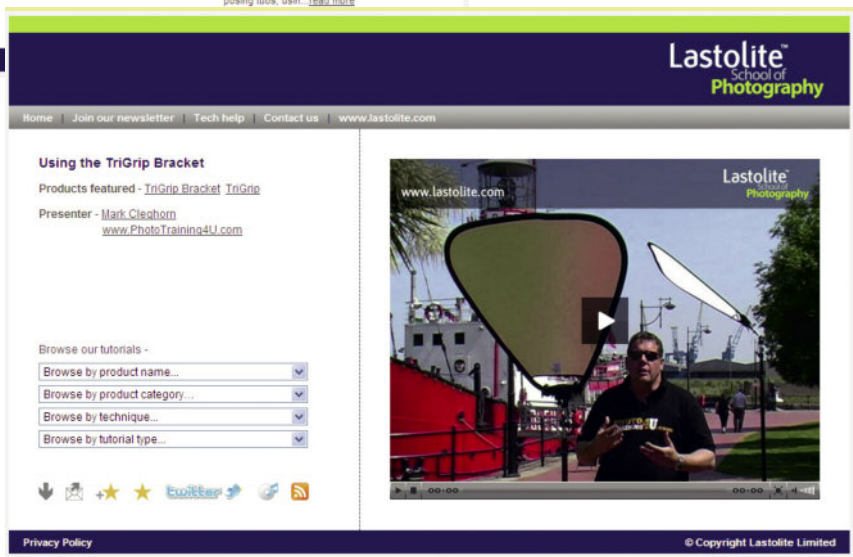
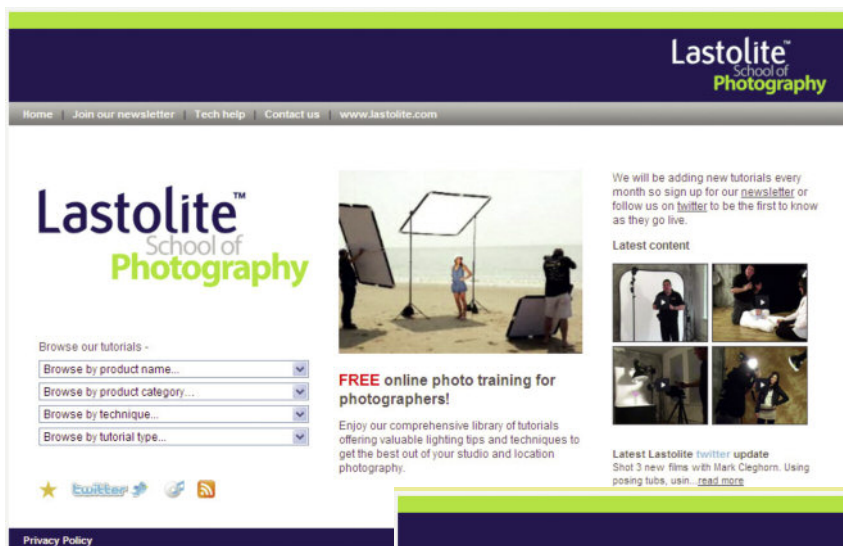
Backgrounds and Lighting Control Systems

www.lastolite.com

Lastolite™

School of Photography

Visit www.lastoliteschoolofphotography.com to view our video tutorials, which show how professional photographers use our products.



Lastolite

Professional

About the company

Lastolite was founded in 1985 and has developed from a company that manufactured the original reflecting panel into a company that now offers a very extensive portfolio of market leading products. To maintain our leading edge we make significant investments into research and development. This ensures that we can continue to launch new innovative products to meet the needs of the ever changing photo and video markets. This brochure features more new products than ever before. There are a number of developments and additions to our existing portfolio as well as some major new concept products.

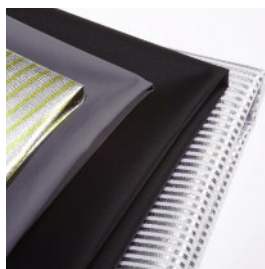
Lastolite's textile based products are all produced within our own manufacturing plants. Our strict quality standards enable us to deliver a world class product manufactured to the highest quality, ensuring it can withstand the repeated daily use of the most demanding user. This attention to detail and our commitment to deliver ground breaking products to the photo and video markets has lead to the Lastolite brand being sold in more than 40 countries worldwide.



Three stitch lines



Two stitch line plus an upgraded zip



High performance fabrics

Our research and development team are continually looking at ways to further improve the way our products are manufactured. An example of this would be the rim tape we use on many of our products. It is now even stronger making the products using this tape even more durable. We have also introduced a triple stitch line on most of our products as opposed to using just one. This again adds strength and ensures the product will last for many years. Our reflective fabrics also continue to be developed to the highest specification - not only for their reflective properties but also their construction which prevents cracking of the film and potential delamination. Finally, to support these product improvements we have also developed a much more durable fabric for all the carry cases our products are supplied in. A high grade zip and multiple stitch lines construction ensure they will last as long as our products.



Some of the products featured in this brochure may not be available in your country. Product codes may also differ. Please check availability and product codes with your local distributor.

Index

TriGrip	p2
TriGrip Difflector / TriGrip Bracket	p3
TriFlips 8:1 / TriFlips 8:1 Deluxe Kit	p4
Collapsible Reflectors	p5
Bottletops 5:1 / Accessories	p6
UpLite 4:1	p7
Skylite	p8
Skylite / Ezyview	p9
Triflector MkII	p10
Lumen8	p11
Lumen8 Kits	p12
Ezybox Studio	p13
MegaLite	p14
KickerLite	p15
EzyBalance / XpoBalance / TriBalance	p16
RayD8 c3200 / RayD8 c5600	p18
Ezybox Hotshoe	p19
Ezybox Hotshoe Accessories	p20
Ezybox Hotshoe Kits	p20
Creative Diffusers and Mask Strips / Triflector Speed-Lite	p21
Strobo	p22
Strobo Kit - Ezybox Hotshoe Plate	p23
Strobo Kit - Direct to Flashgun	
Strobo Kits / Strobo Accessories	
Hotrod Octa Softbox / Hotrod Strip Softbox	p24
Ezybox Quad	p25
Hotshoe Tiltheads / TriFlash	p26
TriFlash Shoe Lock / TriFlash Sync	p27
Off Camera Cords / Sync Block	p28
EzyBox Speed-Lite / Micro Apollo MkII	p29
Joe McNally Intro / Joe McNally TriGrip	p30
Joe McNally Ezybox / Joe McNally TriFlash	p31
Joe McNally Skylite / Joe McNally UpLite	p32
Umbrella Kits / Brolly Grip	p33
8:1 Umbrella	p34
Umbrellas - Reversible / Dual Duty	p35
Umbrellas - Dual / All in One	p36
Umbrellas - Essentials / Umbrella Box	p37
Cubelite™	p38
Cubelite™ Kits	p39
Studio Cubelite™	p40
LiteTable / ePhotomaker	p41
Dyed Background Swatches	p42
Dyed Curtain/Muslin Backgrounds	p43
Dyed Knitted Ezycare Backgrounds	p44
Dyed Collapsible Reversible Backgrounds	p45
Plain Background Swatches	p46
Plain Collapsible Backgrounds	
Plain Knitted Ezycare Backgrounds	p47
Paper Roll Backgrounds	p48
EzyRoll Background Support	p49
HiLite Backgrounds	p50
HiLite Bottle Tops	p51
Superwhite Vinyl Backgrounds	p52
Coloured Vinyl Backgrounds	
ChromaKey Collapsible Reversibles	p53
ChromaKey Curtain/Muslin Backgrounds	
Background Supports	p54
Stands / Brackets and Extending Handles	p55
Posing Tubs / Baby Posing Coat	p56
Baby Poser	

The specifications shown on this leaflet are based upon the latest information at the time of printing. In line with our policy of continual product development Lastolite Limited reserve the right to make changes at any time, without notice, to specifications and models, and to discontinue items.

Lighting Control

TriGrip

The TriGrip reflectors feature a moulded handle with securing strap, allowing even more accurate positioning of the reflector with just one hand, which means that light can be directed to all those awkward spots e.g. under the chin and eyes without the need for stands or supports.

The securing straps also allow you to support the reflector without actually gripping the handle, reducing the pressure on your wrist and fingers when held for prolonged periods.



Close up without TriGrip



Close up with TriGrip

TriGrip designed by Gary Astill. A registered design.

Features

- ▶ Hold the reflector with just one hand
- ▶ Hold 2 reflectors, one in each hand
- ▶ New moulded handle with strap
- ▶ Double sided
- ▶ Perfect for location work, as no stand is necessary
- ▶ Collapses to a third of its original size

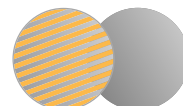
Silver / White



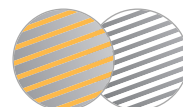
Gold / White



Sunfire / Silver



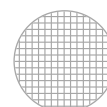
Sunlite / Soft Silver



Diffuser 1 Stop



Diffuser 2 Stops



Specifications

Mini TriGrip	Size	Code	TriGrip	Size	Code	Large TriGrip	Size	Code
Silver / White	45cm (18")	3531	Silver / White	75cm (30")	3631	Silver / White	1.2m (48")	3731
Gold / White	45cm (18")	3541	Gold / White	75cm (30")	3641	Gold / White	1.2m (48")	3741
Sunfire / Silver	45cm (18")	3536	Sunfire / Silver	75cm (30")	3636	Sunfire / Silver	1.2m (48")	3736
Sunlite / SoftSilver	45cm (18")	3528	Sunlite / SoftSilver	75cm (30")	3628	Sunlite / SoftSilver	1.2m (48")	3728
Diffuser, 1 Stop	45cm (18")	3551	Diffuser, 1 Stop	75cm (30")	3651	Diffuser, 1 Stop	1.2m (48")	3751
Diffuser, 2 Stops	45cm (18")	3507	Diffuser, 2 Stops	75cm (30")	3607	Diffuser, 2 Stops	1.2m (48")	3707
Collapses to 20cm (8")			Collapses to 30cm (12")			Collapses to 51cm (20")		

TriGrip Difflector

The TriGrip Difflector is the world's first dual purpose reflector panel which can be used as a diffuser and a soft silver bounce reflector. The unique fabric developed for this product allows light to pass through one side and bounce off the other side, making it a truly versatile product whatever the lighting conditions.

The TriGrip Difflector also features the unique TriGrip moulded handle for accurate positioning of the reflector with just one hand.



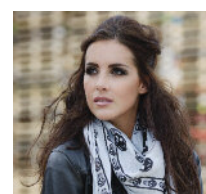
With diffuser and reflector

Features

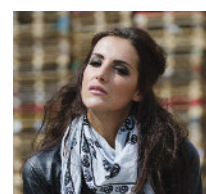
- ▶ Hold the reflector with just one hand
- ▶ Hold two reflectors one in each hand
- ▶ Use as a diffuser or a bounce reflector
- ▶ Collapses to a third of its original size

Specifications

TriGrip Difflector	Code
TriGrip Difflector mini 45cm (18")	3552
TriGrip Difflector 75cm (30")	3652
TriGrip Difflector large 1.2m (48")	3752



With diffuser only

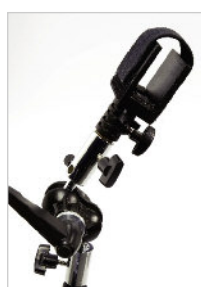


Without TriGrip Difflector

TriGrip Bracket

The TriGrip bracket is ideal for photographers who work alone and want to support the TriGrip reflector on one of our extending handles, a lighting stand, tripod or any other type of fixing bracket (a spigot connector may be required). Simply place the moulded TriGrip handle into the bracket and secure it in place with the strap. The ball joint connector enables you to then position the TriGrip exactly where you want leaving your hands free to operate the camera.

The bracket can be used to support the TriGrip when working with ambient light or in conjunction with battery operated flash using the flash gun attachment arm to bounce light off the reflectors surface or shoot through a diffusing panel.



Features

- ▶ Ideal for photographers who work alone
- ▶ Compact foldaway design
- ▶ Can be used with battery operated flash guns
- ▶ Multi position ball joint connector

Specifications

TriGrip Bracket	Code
TriGrip Bracket*	2430

* Not recommended for use with the large TriGrip.



Lighting Control

TriFlips 8:1

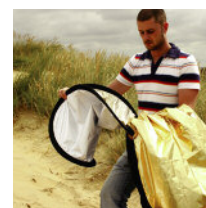
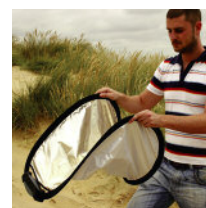
Never get caught out again, up to 8 surfaces in the same bag. The TriFlips are designed to increase the versatility of the TriGrip reflector. Simply insert the TriGrip into the TriFlip sleeve for instant access. TriFlip surfaces: Silver, White, Soft Silver, Gold, Sunfire, Sunlite and Black.



For illustrative purposes only to show different surfaces. TriFlips contain only two sleeves.

Features

- ▶ Contains 2 x TriFlip sleeves which are double sided and reversible providing 7 different coloured surfaces
- ▶ Set up in seconds
- ▶ Taut professional finish



Specifications

TriFlips	Size	Code	TriFlip 8:1 Kits	Size	Code
TriFlips (sleeves with 7 reflective surfaces)	75cm (30")	3698	2 stop TriGrip diffuser with TriFlip sleeves	75cm (30")	3696
Mini TriFlips (sleeves with 7 reflective surfaces)	45cm (18")	3598	2 stop Mini TriGrip diffuser with TriFlip sleeves	45cm (18")	3596

TriFlip 8:1 Deluxe Kit

The TriFlip 8:1 Deluxe Kit provides a complete all in one solution for the busy photographer. The kit comprises: 1 x 75cm (30") TriGrip 2 stop diffuser, 1 x set of 75cm (30") TriFlip covers containing white, silver, softsilver, gold, sunlite and sunfire reflective surfaces as well as a black surface, 1 x air cushioned lighting stand (85cm - 312cm high), 1 x TriGrip Bracket and 1 x carry case with shoulder strap.

Specifications

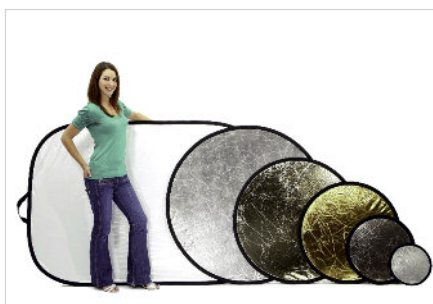
TriFlip 8:1 Deluxe Kit	Code
TriFlip 8:1 Deluxe Kit	3699



Collapsible Reflectors

Lastolite, the original manufacturer of collapsible reflectors, continues to improve the quality and variety of it's reflector range.

As well as the the lifetime guarantee on reflector steel, Lastolite has also upgraded the rim tape to create a stronger, longer lasting reflector.

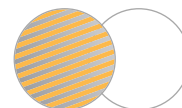


Features

- ▶ Collapsible / Reversible
- ▶ Lifetime rim guarantee
- ▶ Upgraded rim tape
- ▶ Six useful sizes and six essential colours
- ▶ Double-coated reflective surfaces
- ▶ Collapses to a third of its original size



Sunfire / White



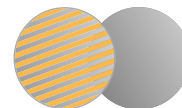
Silver / White



Silver / Gold



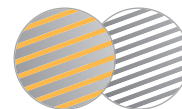
Sunfire / Silver



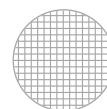
Gold / White



Sunlite / Soft Silver



Diffuser, 2 Stops



White
5600°K



Soft Silver
5600°K



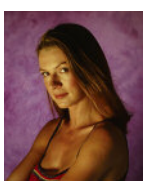
Silver
5600°K



Sunlite
5000°K



Sunfire
4750°K



Gold
3800°K

Specifications

Collapsible Reflectors

Open Sizes	30cm (12")	50cm (20")	76cm (30")	95cm (38")	120cm (48")	1.8 x 1.2m (6' x 4')
Collapsed Sizes	14cm (5.5")	24cm (9")	30cm (12")	40cm (16")	48cm (19")	64cm (25")
	CODE	CODE	CODE	CODE	CODE	CODE
Sunfire / White	1206	2006	3006	3806	4806	7206
Silver / White	1231	2031	3031	3831	4831	7231
Silver / Gold	1234	2034	3034	3834	4834	7234
Sunfire / Silver	1236	2036	3036	3836	4836	7236
Gold / White	1241	2041	3041	3841	4841	7241
Sunlite / Soft Silver	1228	2028	3028	3828	4828	7228
Diffuser, 2 Stops	-	2007	3007	3807	4807	7207

Reflector Kit

Reflector Kit 76cm (30") silver/gold and white reflectors

Code

1505

Bottletops 5:1

An innovation of Lastolite's renowned range of reflectors.

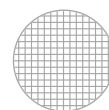
Simply slip the elasticated Gold / White or Sunfire / Silver cover over the reflector or diffuser to produce an instant change of colour.



Features

- ▶ Sets up in seconds
- ▶ No extra weight
- ▶ Collapses to a third of its original size
- ▶ Five surfaces in one bag
- ▶ Taut professional finish

Diffuser Panel



Gold / White Cover



Sunfire / Silver Cover



Specifications

Bottletop Accessories	Size	Code
Diffuser with Gold / White & Sunfire / Silver cover	50cm (20")	2096
Diffuser with Gold / White & Sunfire / Silver cover	75cm (30")	3096
Diffuser with Gold / White & Sunfire / Silver cover	95cm (38")	3896
Diffuser with Gold / White & Sunfire / Silver cover	120cm (48")	4896

Accessories

Suitable for all reflectors and bottletops, the following accessories allow for versatile positioning:



1100 Universal Bracket



1104 Diffuser Bracket



1113 Reflector Bracket



1107 Panelite Bracket

Features

- ▶ Wind resistant clips for outdoor use
- ▶ 1113 clamps to tripod legs and tables
- ▶ 1107, 1100 & 1104 all adjustable in size

Specifications

Reflector Accessories	Size	Code
Universal Bracket	50cm - 120cm (20" - 48")	1100
Flexible Reflector Bracket	30cm (12")	1113
Diffuser Bracket	50cm - 120cm (20" - 48")	1104
Panelite Bracket	95cm - 180cm (38" - 72")	1107

UpLite 4:1 PATENT PENDING

The UpLite is ideal for photographers who work alone and need to support a reflector at an angle on the floor to bounce light up into the subject. There are two versions available:

UpLite 'cool tone' – sunlite/softsilver and silver/white reflective surfaces

UpLite 'warm tone' – gold/white and sunfire/silver reflective surfaces

The UpLite features two 120cm x 90cm (4' x 3') double sided reflectors which attach together to form a hinge on one side and on the opposite side an adjustable support bracket attaches to create a 'wedge' shape. The bracket can be used to adjust the reflector angle from 30 degrees to 80 degrees. A waterproof shower cap is also supplied to protect the reflective surface touching the floor when the UpLite is used outdoors. Waterproof sprung steel also ensures a durable product whatever the conditions. The two reflectors detach from each other to be used as individual hand held panels.

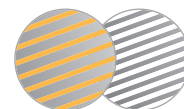
Features

- ▶ Self supporting reflector panels
- ▶ 30 to 80 degree positions
- ▶ Ideal for outdoor use
- ▶ Waterproof sprung steel and base showercap
- ▶ Can be used as individual reflector panels
- ▶ 4 reflective surfaces in each version
- ▶ Folds to a third of its original size
- ▶ Includes handy carry case

Specifications

UpLite	Code
UpLite 'cool tone'	3498
UpLite 'warm tone'	3499

Sunlite / Soft Silver



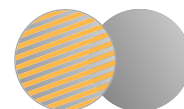
Silver / White



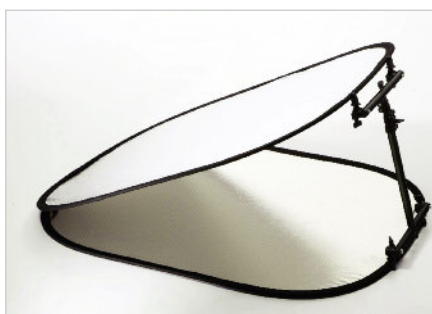
Gold / White



Sunfire / Silver



Panels hinged on long edge



Panels hinged on short edge



Skylite

Skylite

For the location photographer who needs lighting control in the most demanding situations. The Skylite's collapsable but rigid aluminium frame can be used in windy conditions.

Skylite Frames/Fabrics

Skylite frames, fabrics and accessories are available separately, so that you can mix and match as you choose. The range of materials includes 'Sunfire' - Lastolite's combination of Gold and Silver, which provides a uniquely warm, soft light, ideal for skin tones.

Skylite Kits & Accessories

For greater value choose a Standard or Premium Skylite Kit. The Standard kit contains a Silver/White reflector, 1.25 stops diffuser, frame and bag. The Premium kit offers a choice of Sunfire/White or Silver/White reflector and is ideal if you also require a crossbar handle and/or gripheads.



Features

- ▶ Aluminium frame
- ▶ Resistant to rust so ideal for outdoors
- ▶ There is an elastic cord running through the aluminium, so it's impossible to lose parts or leave anything behind
- ▶ Skylite covers velcro easily into place for an impressively taut finish
- ▶ One bag fits all sizes

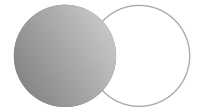
Specifications

Skylite Frames	Code
Skylite Frame Small (1.3kg) 1.1m x 1.1m (3'6" x 3'6")	811
Skylite Frame Medium (2kg) 1.1m x 2m (3'6" x 6'6")	812
Skylite Frame Large (2.3kg) 2m x 2m (6'6" x 6'6")	822
Skylite Accessories	Code
Skylite Bag	8444
Skylite Griphead	8446
Skylite Floor Bracket (does not include Griphead)	8447
Skylite Crossbar Handle	8449

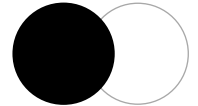
Gold / Silver



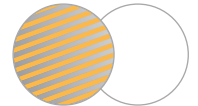
Silver / White



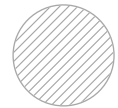
Black / White /
5600°K



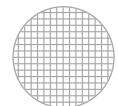
Sunfire / White
4750°K / 5600°K



Diffuser 0.75 Stop



Diffuser 1.25 Stop



Black Velvet



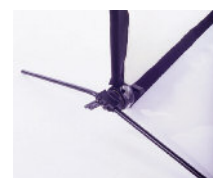
Specifications

Skylite Kits	Sunfire/White Reflector	Silver/White Reflector	1.25 Stops Diffuser	Frame	Bag	Griphead	Extra Griphead	Crossbar Handle	Code
Skylite Small 'Premium' Kit	1		1	1	1	1			81144
Skylite Medium 'Premium' Kit	1		1	1	1	1		1	81244
Skylite Large 'Premium' Kit	1		1	1	1	1	1		82244
Skylite Small 'Premium' Kit		1	1	1	1	1			81144GI
Skylite Medium 'Premium' Kit		1	1	1	1	1		1	81244GI
Skylite Large 'Premium' Kit		1	1	1	1	1	1		82244GI
Skylite 'Standard' Small kit		1	1	1	1				81143
Skylite 'Standard' Medium kit		1	1	1	1				81243
Skylite 'Standard' Large kit		1	1	1	1				82243

Skylite Fabrics	Small Fabrics 1.1m x 1.1m (3'6" x 3'6")	Medium Fabrics 1.1m x 2m (3'6" x 6'6")	Large Fabrics 2m x 2m (6'6" x 6'6")
	Code	Code	Code
Black / White	81121	81221	82221
Sunfire / White	81106	81206	82206
Silver / White	81131	81231	82231
Gold / Silver	81134	81234	82234
1.25 Stop Diffuser	81107	81207	82207
0.75 Stop Diffuser	81101	81201	82201
Black Velvet	81102	81202	82202



Skylite's special griphead allows it to be fixed to stands and tilted as required. (8446)



Skylite's floor bar (8447) enables the system to stand alone (particularly handy for solo shoots). Must be used with a griphead (8446)

Ezyview

Ezyview is the ideal solution for any digital photographer who struggles to view their images on a laptop outdoors. The Ezyview eliminates the reflections from your screen and is of course, collapsible so is easy to carry with you.



Features

- ▶ Collapses to a third of its original size
- ▶ Waterproof fabric and steels
- ▶ Cover for viewing while using a keyboard

Specifications

Ezyview	Code
40cm (16")	2492



Triflector MkII

The Triflector is widely used in makeovers and fashion shots because the subject is given the Triflector's distinctive 'catch lights' to the eyes. The hinge mechanisms make all three panels individually adjustable to get light exactly where you need it. The panels each fold like our collapsible reflecting panels; the frame folds away and they all fit into a portable bag. Triflector MkII weighs only 1.2kg.



Using with Ezybox Studio Softbox



Without Triflector



With Triflector



Using with Beautydish



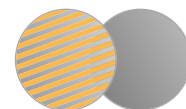
Features

- Unique quality of light
- Weighs just over 1kg

Specifications

Triflector MkII	Code
Triflector Mk II - Sunfire/Silver*	2933
Triflector Mk II - Silver/ White*	2933SW
Triflector MkII Panels	Code
Set of three Gold/ White reflector panels	2905
Set of three Translucent reflector panels	2909
Set of three Silver / White reflector panels	2903
Triflector MkII Kit	Code
TriFlector MkII with Sunfire / Silver panels & stand kit**	2933SP

Sunfire / Silver



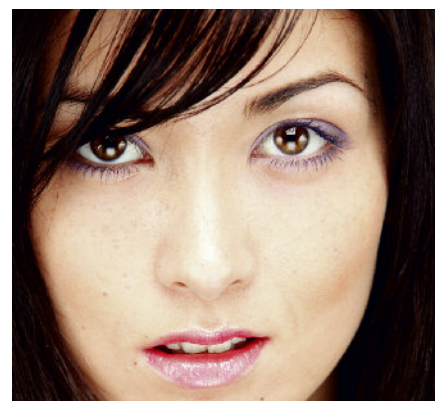
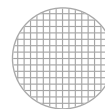
Silver / White



Gold / White



Translucent Fabric
reduces light by 1.2 stop



* Includes adjustable framework and 3 x reflector panels

** Includes adjustable framework, 3 x reflector panels and stand (1158 - see page 55)

Lumen8

Lastolite's Lumen8 flash range has been designed to fulfil the needs of the most demanding working photographers. The range has been technically developed to a high level of specification offering reliability, durability and safety on location or in the studio. The range is further enhanced with an extensive range of accessories which feature the popular S type bayonet fitting.



3212



2460



3580



3265



3288



3269



3275



3268

Features

- ▶ Available in 200w and 400w versions
- ▶ Auto dumping for quick light output changes
- ▶ 100w modelling bulbs so you can see clearly how you are working
- ▶ Switchable modelling light proportional or full power
- ▶ Audible ready light



Specifications

Lumen8	Code
Lumen8 Flash Head F200	3251
Lumen8 Flash Head F400	3501
Lumen8 Accessories	Code
PVC Umbrella 80cm (32")	3212
PVC Umbrella 100cm (40")	4512
Light Stand (Pneumatic)	1159
Reflector dish 18.5cm (7")	3264
Reflector dish 25cm (10")	3580
Reflector dish 46cm (18")	3274
BeautyLite reflector	3266
Snoot	3288
Barn door and gel set	3269
Gel Clips	3271
Honeycomb grid for 18.5cm (7") dish	3267
Honeycomb grid for 25cm (10") dish	3275
Diffuser & honeycomb for BeautyLite	3268
Sync Cable	3262
Radio Trigger	3265
Super Leuci Modelling Bulb (100W)	3261

Lumen8 Kits

The Lumen8 flash kit is designed for photographers who need to be mobile. The two head kit is supplied in a robust, hard wearing wheeled case, which can also be carried on the shoulder or by hand. The high quality specification continues with the inclusion of one of Lastolite's famous black/white PVC umbrellas and the world renowned Ezybox, the pop-up 60cm x 60cm softbox. And to finish off this ultimate flash kit two wide based, air dampened stands ensure that your lights are supported securely.



3502



3502 Stand case contents



2 x Flash head case



3505



3504



2 x Flash head case contents

Specifications

Lumen8 Kits	Flash Head 200	Flash Head 400	Reflector 18.5cm	PVC 80cm Umbrella	Light Stand	Ezybox 60x60cm Softbox	Softbox with rods 60x60cm	Case	Sync Cable	Code
Lumen8 Flash Kit F200	2		2	1	2	1		2	2	3250
Lumen8 Flash Kit F400		2	2	1	2	1		1	2	3500
Lumen8 Flash Umbrella Kit F200	2		2	2	2			2	2	3253
Lumen8 Flash Umbrella Kit F400		2	2	2	2			1	2	3502
Lumen8 Softbox Kit F400		2	2		2		2	1	2	3509
Lumen8 Flash Single Head Umbrella Kit F200	1		1	1	1			1	1	3254
Lumen8 Flash Single Head Umbrella Kit F400		1	1	1	1			1	1	3504
Lumen8 Flash Single Head Softbox* Kit F200	1		1		1		1	1	1	3255
Lumen8 Flash Single Head Softbox* Kit F400		1	1		1		1	1	1	3505

*Not Ezybox Softbox

Ezybox Studio

How many times have you been on location and wished you had a TRULY portable softbox?

Until now, softboxes have generally been seen as a studio item either because they're too bulky to carry or take too long to assemble. A unique 'speedring' adaptor attaches in less than ten seconds with NO SCREWS OR RODS of any type! EZYBOX really is "up in a flash".



Features

- ▶ Folds up just like a Lastolite reflector - the bag is 25cm (10") across (code 2460)
- ▶ Up and working in minutes!
- ▶ Very low light loss, only half a stop!
- ▶ Colour balanced



Specifications

EzyBox Studio Softboxes		Code
Small Square*	45cm x 45cm (18" x 18")	2445
Medium Square*	60cm x 60cm (24" x 24")	2460
Large Square*	90cm x 90cm (36" x 36")	2490
Medium Rectangular*	90cm x 45cm (36" x 18")	2495
Large Rectangular*	90cm x 60cm (36" x 24")	2496
Studio Softboxes Accessories		Code
Grid (fabric)	60cm x 60cm (24" x 24")	2960
Grid (fabric)	90cm x 90cm (36" x 36")	2990
Outer Diffuser**	60cm x 60cm (24" x 24")	2461
Outer Diffuser**	90cm x 90cm (36" x 36")	2491

* Includes recessed diffuser

** Outer diffuser converts the Softbox from recessed to flat fronted and to give added diffusion.

Specifications

Speedrings	Code	Speedrings	Code
Bowens / Calumet S type	2351	Propet	2361
Elinchrom	2352	Norman	2363
Profoto	2354	Electra / Courtney	2387
Hensel Contra	2356	Visatec	2389
Multiblitz compact	2357	Bron	2390
Multiblitz Variolux	2358	Bowens L Type	2391
Balcar / White Lightening / Alien Bees	2353	Photogenic	2392

Lighting Control

MegaLite

The MegaLite is a large 180cm x 120cm (6' x 4') portable softbox and silver reflective panel. The MegaLite can be used as a floor standing unit or in conjunction with the adjustable stand (with wheels) for ultimate adjustability. The stand enables the photographer to raise the softbox up to 105cm (42") from the floor and rotate the angle of the softbox/reflector from vertical to horizontal. The softbox can be lit with one or two studio flash heads (one on each side) depending on the output required. If using the softbox with the stand (6489) the heads attach directly onto the stand so they move with the softbox making positioning very quick and easy.

Features

- ▶ Portable 180cm x 120cm (6' x 4') softbox
- ▶ Folds to a third of its original size
- ▶ Silver reflector on rear surface
- ▶ Optional stand with wheels and vertical and rotational movements

Specifications

MegaLite	Code
MegaLite softbox/reflector	6488
Adjustable stand with wheels	6489



Using a traditional light stand



KickerLite PATENT PENDING

The KickerLite is essentially a low level 90cm x 120cm (3' x 4') floor softbox ideal as a fill light to bring out the detail in shadow areas i.e. under the chin and around the eyes. The KickerLite features an 'H' frame support to accommodate a studio flash head taking away the need for an additional light stand. The softbox features a 2 stop diffusion layer and an internal baffle (sunfire/silver) for further light manipulation. The KickerLite can also be used with battery operated flash guns.

Features

- ▶ Floor level softbox at 35 degree angle
- ▶ For true head to toe lighting
- ▶ Integrated flash head bracket
- ▶ 2 stop diffusion layer
- ▶ Can be used with battery operated flash guns
- ▶ Softbox folds to a third of its original size

Specifications

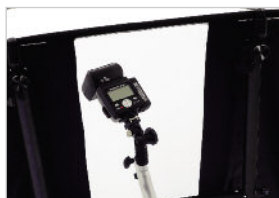
KickerLite	Code
KickerLite	3492



Without KickerLite



With KickerLite



Colour Balance and Exposure Control

EzyBalance PATENT PENDING

The EzyBalance 18% is a handy double sided 'pop up' grey/white card which simplifies the complex technical issues surrounding exposure and colour correction when working in different lighting conditions.

A unique focusing target enables the camera to focus on the card and take the necessary readings. A waterproof version is also available for scuba divers.

The EzyBalance 12% card is based on the same mid tone concept however, it features a slightly lower reflective value than the 18% version, and is more in tune with some manufacturers products.



EzyBalance 18%



EzyBalance 12%

Features

- ▶ Colour correction, pre and post capture
- ▶ Exposure control, pre and post capture
- ▶ Accurate colour rendition
- ▶ Collapsible, durable and cleanable
- ▶ Double sided
- ▶ Unique focusing target
- ▶ For use with digital or film photography
- ▶ Collapses to a third of its original size



EzyBalance 18% (divers version)

XpoBalance PATENT PENDING

The XpoBalance works in a similar way to the EzyBalance but has the added advantage of three different grey surfaces on one side and a black, white and 18% grey surface on the other side, collectively offering a range of white balance, exposure, colour correction and bracketing adjustment options. XpoBalance Notemaker features a dry wipe disc to make quick visual reference notes during the shoot



XpoBalance



XpoBalance Notemaker



Dry wipe disc

Specifications

EzyBalance	
Size	Code
30cm (12") 18%	1250
50cm (20") 18%	2050
75cm (30") 18%	3050
30cm (12") 12%	1254
EzyBalance for Scuba Divers	
30cm (12") 18%	1252
XpoBalance	
38cm (15")	1558
38cm (15") Notemaker	1559
TriBalance	
75cm (30")	3658

TriBalance PATENT PENDING

The TriBalance is the same shape and size as our popular TriGrip product. Like the XpoBalance this product is incredibly versatile offering a black, white and 18% grey surface on one side and a silver reflective surface on the other.



White Balancing the Camera

The EzyBalance, XpoBalance and TriBalance all feature a unique focusing target to enable the camera to focus on the card and take the necessary readings for an accurate white balance setting. Many cameras struggle to actually focus on a plain white or grey area.



A poorly exposed and colour balanced image.



Get the model to hold the EzyBalance.



Select the Custom White Balance setting on your camera (refer to your camera manual for instructions).



Zoom in so the EzyBalance fills the whole frame of the camera and take a reading off the card (refer to your camera manual for instructions).



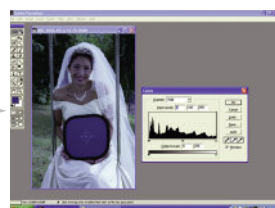
Your White Balance is now set so you can re-take the shot with the correct exposure and colour balance.

Post Capture - Exposure and Colour Balancing

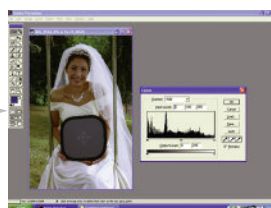
The EzyBalance, XpoBalance and TriBalance can also be used as an accurate reference point for post capture manipulation in Adobe Photoshop® (and other software packages). All you need to do is take the first shot with the card in the photograph each time you shoot in a different lighting situation.



A poorly exposed and colour balanced image.



Open up into Photoshop the image you took that included the card. Then open up the 'levels' adjustment window.



Select the grey dropper and click on the card. The poor exposure and colour balance is automatically corrected. Save these changes as a 'new action'.



You can then apply the 'new action' to the remainder of the batch from that shoot. All the images are automatically adjusted for you.

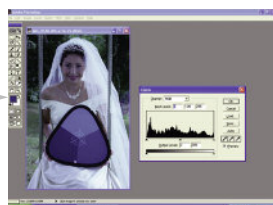
Post Capture - Exposure and Colour Balancing Effects

Due to the multiple surfaces on the XpoBalance and TriBalance, these cards can be used to create some interesting 'instant' effects as well as the features already mentioned above. The TriBalance has the added benefit of a reflective silver surface on the other side so it can also be used as a traditional reflector.

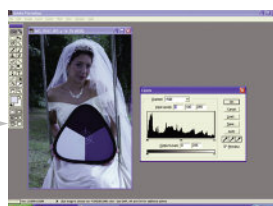
You can select the grey dropper and click on any of the three grey surfaces of the XpoBalance to give a slightly different exposure and colour balance effect.



A poorly exposed and colour balanced image.



Open up into Photoshop the image you took that included the card. Then open up the 'levels' adjustment window.



You can use the black, white and grey dropper to click on their corresponding colour on the XpoBalance or TriBalance to emphasize that particular colour range in the shot.

RayD8 c3200

The RayD8 c3200 kit provides an entry-level studio lighting system for product and portrait photography. Using a continuous tungsten light source (3200k), this kit is based on a 'what you see is what you get' approach. The soft white 80cm umbrellas included in the kit ensure the best distribution of the light.



Features

- ▶ S type bayonet fitting
- ▶ Removable reflector
- ▶ Wide range of accessories available
- ▶ Ideal for product photography

Specifications

RayD8 c3200 accessories	Code
1x light head, power cable and reflector	3603
500w P 2/1 Tungsten bulb	3604



3604

Specifications

RayD8 c3200 kit	Light Head	Reflector 25cm (10")	500w P 2/1 Bulb	Light Stand	PVC 80cm Umbrella	Code
RayD8 c3200 kit	2	2	2	2	2	8030

RayD8 c5600

The RayD8 c5600 kit provides an entry-level studio lighting system for product and portrait photography. Featuring a high output compact fluorescent bulb (equivalent to 400w), this continuous light system offers colour corrected light at 5600k (daylight).

The bulbs are compact fluorescents and run at a low temperature, making them ideal for photographing food, people and other temperature sensitive subjects.



Features

- ▶ Cool running, high output
- ▶ Colour balanced
- ▶ S type bayonet fitting
- ▶ Removable diffuser cover

Specifications

RayD8 c5600 accessories	Code
Colour corrected 85w fluorescent bulb	8036
Fluorescent tube extension and 85w fluorescent bulb	8037
Fluorescent extension tube	3270



Specifications

RayD8 c5600 kit	Light Head	Reflector 25cm (10")	Fluorescent Tube Extension	85w Bulb Fluorescent	Light Stand	Removable Diffuser	Code
RayD8 c5600 kit	2	2	2	2	2	2	8035

Ezybox Hotshoe

The Ezybox Hotshoe converts your battery operated flash gun from a harsh directional light into a much softer diffused light. Available in three sizes - 38cm x 38cm, 54cm x 54cm and 76 x 76cm. The Ezybox hotshoe folds flat for easy storage and can be assembled in a matter of minutes. There are also a number of accessories available including extending handles, a tilthead bracket and creative diffusers.



Removable inner + outer diffusers



Without Ezybox Hotshoe



With Ezybox Hotshoe

Features

- ▶ Softbox for Hotshoe flash
- ▶ Adjustable bracket for different sized flash guns
- ▶ Operates as a coldshoe
- ▶ Folds flat
- ▶ Assembled in a few minutes
- ▶ Ideal for location use

Specifications

Ezybox Hotshoe	Size	Code
Ezybox Hotshoe	38cm x 38cm (15" x 15")	2438
Ezybox Hotshoe	54cm x 54cm (21" x 21")	2462
Ezybox Hotshoe	76cm x 76cm (30" x 30")	2480



Nikon, Canon etc



Quantum (with 2417)



Metz 76 (with 2416)



Metz 45 (with 2415)

Ezybox Hotshoe Accessories



2413



2400 & 2401



2435



2499



Ezybox Hotshoe Grid (fabric)

Specifications

Ezybox Hotshoe Accessories	Code
38cm x 38cm Ezybox Hotshoe (without plate)	2439
54cm x 54cm Ezybox Hotshoe (without plate)	2463
76cm x 76cm Ezybox Hotshoe (without plate)	2481
Grid (fabric) for 54cm (21") Ezybox Hotshoe	2962
Grid (fabric) for 76cm (30") Ezybox Hotshoe	2980
Ezybox Hotshoe plate (with standard flash mount)	2414
Flash mount adaptor for Metz 45*	2415
Flash mount adaptor for Metz 76*	2416
Flash mount adaptor for Quantum*	2417
Extending Handle (24cm - 48cm)	2400
Extending Handle (65cm - 150cm)**	2413
Extending Handle (73cm - 221cm)**	2435
Small handle (15cm) with spigot and hotshoe connector	2437
Non rotating extending handle 70 - 176cm**	2452
Non rotating extending handle 74 - 232cm**	2453
Waist holder for extending handles 2413 and 2435	2499
Clamp (with brass spigot)	2404
Tilthead (with spigot)	2401

* Only compatible with the 2414 plate

** Includes Waist holder 2499



2404



2401

Ezybox Hotshoe Kits



Specifications

Ezybox Hotshoe Kits	Size	Code
Ezybox Hotshoe	38cm x 38cm (15" x 15")	2470
Ezybox Hotshoe	54cm x 54cm (21" x 21")	2471
Ezybox Hotshoe	76cm x 76cm (30" x 30")	2472

*Kit includes: Ezybox Hotshoe (with plate), 4 section stand, tilthead bracket (2401), extending handle (2400), padded shoulder bag and circular carry case.



2401

Creative Diffusers and Mask Strips

The creative diffusers and mask strips turn the Ezybox Hotshoe into a truly creative light modifying accessory. The diffuser set includes 3 covers with a different cut out mask and a 2 stop diffusion panel. The mask strips are fully adjustable and allow the photographer to position the strips across the front of the Ezybox Hotshoe in any arrangement. These strips can be used to create the shadow effect of a venetian blind, a window, columns or simply random shapes.



2468, 2469 & 2467



2920



Features

- ▶ Create the shadow effect of a window blind, window frame or pillars
- ▶ Quick and easy to set up
- ▶ Fully adjustable mask strips

Specifications

Creative Diffusers	Code
Set of 3 diffusers for the 38cm Ezybox Hotshoe	2468
Set of 3 diffusers for the 54cm Ezybox Hotshoe	2469
Set of 3 diffusers for the 76cm Ezybox Hotshoe	2467
Creative mask strips for the 54cm Ezybox Hotshoe	2920



2920

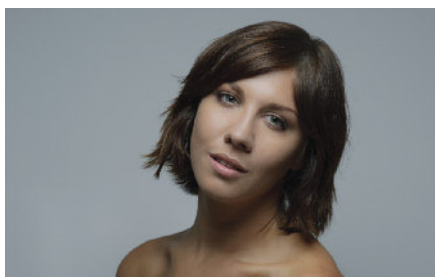


Triflector Speed-Lite

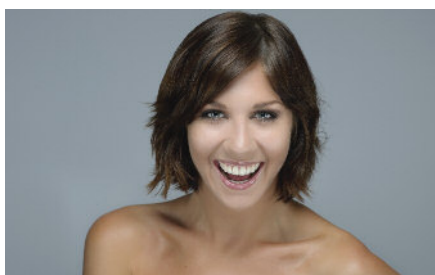
The ultimate beauty lighting accessory for Ezybox Hotshoe users. The Triflector Speed-Lite stand incorporates a clever overhead arm to support the Ezybox Hotshoe which alleviates the need for a separate, expensive boom arm stand. The three reflective panels work in the same way as our highly acclaimed Triflector MkII (page 10) to allow the photographer to position the light exactly where he wants and achieve distinctive catchlights.



Ezybox Hotshoe not included in the kit



Without Triflector Speed-Lite



With Triflector Speed-Lite

Features

- ▶ FOR USE WITH HOTSHOE FLASHGUNS ONLY
- ▶ All in one portable solution
- ▶ Compatible with the Ezybox Hotshoe
- ▶ Assembles in minutes
- ▶ Includes carry case

Specifications

Triflector Speed-Lite	Code
Triflector Speed-Lite kit	2833



Ezybox Hotshoe not included in the kit

Strobo

The Strobo is a compact and simple to use creative light modifying system for battery operated flash guns. The Strobo comes as a kit and is available in two versions, one which fits directly onto a flashgun (2600) and the other which includes the highly successful Ezybox Hotshoe Plate (2610).

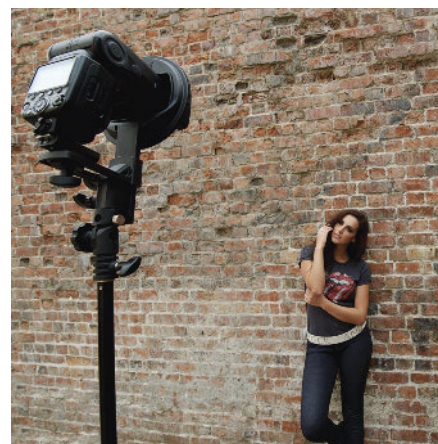
The honeycombs and gels/masks can be used individually or in combination by simply layering them on top of each other using the built in magnetic connectors. There is also an optional barn door system (2620) and Beautybox (2650).

Features

- ▶ Creative light modifiers for battery flash
- ▶ Optional barn doors
- ▶ Unique magnetic connecting system
- ▶ Fits neatly in your camera bag



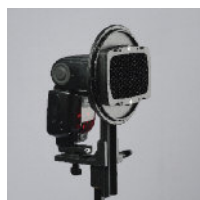
2 x Flashguns with Strobo Honeycomb on one and Strobo red gel on the other



1 x Flashgun with Strobo Honeycomb



Strobo Kit – Ezybox Hotshoe Plate



Honeycomb



Gel holder



Gels



Slide in gel/mask holder

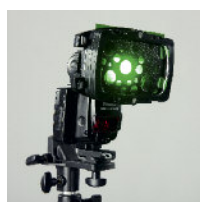
Specifications

Strobo Kit - Ezybox Hotshoe	Code
Strobo Kit - Ezybox Hotshoe Plate	2610

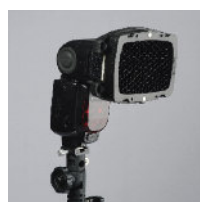
Kit Contents

- 1 x Ezybox Hotshoe Plate (2414)
- 1 x Ezybox Hotshoe Plate Adaptor
- 1 x Honeycomb Grid $\frac{3}{8}$ " (9mm)
- 1 x Honeycomb Grid $\frac{1}{4}$ " (6mm)
- 2 x Gel/Mask Holders
- 1 x Set of 4 Creative Masks
- 1 x Set of 3 Warming Gels - Full, $\frac{1}{2}$ and $\frac{1}{4}$ CTO
- 1 x Set of 3 Cooling Gels - Full, $\frac{1}{2}$ and $\frac{1}{4}$ CTB
- 1 x Set of 4 Coloured Gels - Red, Yellow, Blue & Green
- 1 x Neutral Density 0.6 - 2 Stop Gel
- 1 x Frosted 1 Stop Diffuser Gel

Strobo Kit – Direct to Flashgun



Gel holder and mask holder combined



Honeycomb



Slide in gel/mask holder



Masks

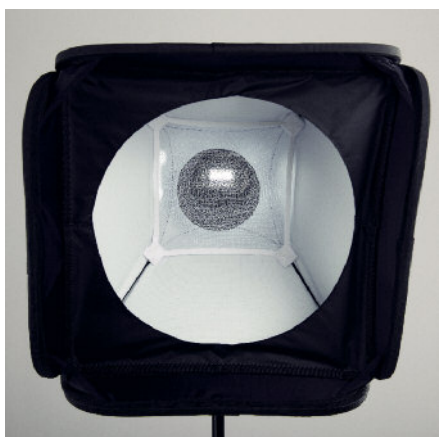
Specifications

Strobo Kit – Direct to Flashgun	Code
Strobo Kit - Direct to Flashgun	2600

Kit Contents

- 1 x Flashgun Adaptor
- 1 x Honeycomb Grid $\frac{3}{8}$ " (9mm)
- 1 x Honeycomb Grid $\frac{1}{4}$ " (6mm)
- 2 x Gel/Mask Holders
- 1 x Set of 4 Creative Masks
- 1 x Set of 3 Warming Gels - Full, $\frac{1}{2}$ and $\frac{1}{4}$ CTO
- 1 x Set of 3 Cooling Gels - Full, $\frac{1}{2}$ and $\frac{1}{4}$ CTB
- 1 x Set of 4 Coloured Gels - Red, Yellow, Blue & Green
- 1 x Neutral Density 0.6 - 2 Stop Gel
- 1 x Frosted 1 Stop Diffuser Gel

Strobo Accessories



38cm (15") Beautybox/Softbox



Barn Doors (bracket and gel holder not included)

Specifications

Strobo Accessories	Code
Barn Doors for Strobo	2620
Beautybox/softbox 38cm (15")	2650



38cm (15") Beautybox/Softbox

Hotrod Octa Softbox

In addition to our traditional square Ezybox Hotshoe softbox we have now introduced Octa softboxes for use with battery operated flashguns. The Octas are available in two different sizes and feature an inner diffusion panel and an adaptor plate with rods (which supports the weight of the softbox). The flashgun simply slides into a shoe mount attached to the adaptor plate.



Features

- ▶ Octa box for an alternative catchlight
- ▶ Simple assembly
- ▶ Slide on shoe mount for flashgun

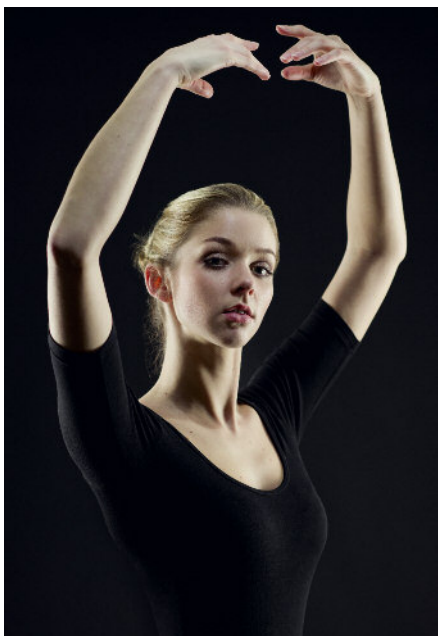
Specifications

Hotrod Octa Softbox	Code
Hotrod Octa Softbox 70cm (27.5")	2670
Hotrod Octa Softbox 90cm (36")	2690



Hotrod Strip Softbox

In addition to our traditional square Ezybox Hotshoe softbox we have now introduced strip softboxes for use with battery operated flashguns. The strips are available in two different sizes and feature an inner diffusion panel and an adaptor plate with rods (which supports the weight of the softbox). The flashgun simply slides into a shoe mount attached to the adaptor plate.

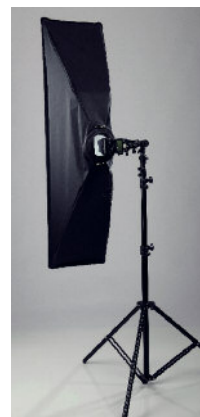


Features

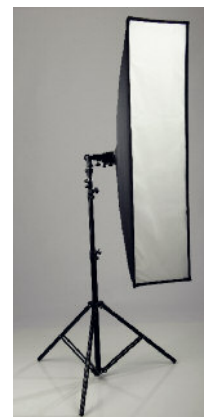
- ▶ Strip box for full length lighting
- ▶ Simple assembly
- ▶ Slide on shoe mount for flashgun

Specifications

Hotrod Strip Softbox	Code
Hotrod Strip Softbox 30cm x 120cm (12" x 48")	2630
Hotrod Strip Softbox 40cm x 120cm (16" x 48")	2640



Rear of box



Front of box

Ezybox Quad

The ultimate flashgun bracket. Whether you are looking for more power or a faster recycling time from your flashguns the Ezybox Quad is the perfect solution. Simply attach up to 4 flashguns to the bracket then attach one of our Ezybox studio softboxes (page 13) or umbrellas (page 30-33) to create a beautifully diffused light. The Ezybox Quad can be used in conjunction with various flashgun triggering systems.



2530 using 2 umbrellas

Features

- ▶ Attach up to 4 flash guns
 - ▶ Strong robust design
 - ▶ Can be used with the full range of Lastolite's Ezybox Studio softboxes or umbrellas
- Includes PC and 3.5mm jack cables

Specifications

Quadflash	Code
Ezybox Quad Bracket	2530
Ezybox Quad Kit with 45cm Ezybox Studio	2545
Ezybox Quad Kit with 60cm Ezybox Studio	2560
Ezybox Quad Kit with 90cm Ezybox Studio	2590



Hotshoe Tiltheads

The Tilthead Shoe Lock features an adjustable 'screw locking' shoe mount which offers an additional locking mechanism to work alongside the built in method used on the flashgun.

The dimensions of the hotshoe on the bottom of each flashgun can vary from one gun to the other. However, the Tilthead Shoe Lock can comfortably accommodate these variances.

Features

- ▶ Slide on or screw locking versions
- ▶ Ratchet movement tilt mechanism
- ▶ Umbrella socket

Specifications

Tiltheads	Code
Tilthead (ratchet movement) with flash shoe*	2402
Tilthead with flash shoe	2403
Tilthead Shoe Lock	2422

* Not compatible with Nikon SB 900 flashgun



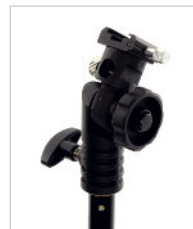
2402*



2422



2422



2422

TriFlash

The TriFlash is a unique bracket to allow photographers to attach up to three flashguns on to one light stand. The bracket also features an umbrella socket so the gun(s) can be used with or without a shoot through or reflective umbrella. Whether you are looking for increased overall power or a quicker recycling time with the guns on lower power, the TriFlash will be a valuable addition to your kit.

Features

- ▶ Attach up to three flashguns
- ▶ Umbrella socket
- ▶ Can be mounted onto standard brass spigot

Specifications

TriFlash	Code
TriFlash	2412
TriFlash Kit (80cm umbrella & stand)	2477
TriFlash Kit (100cm umbrella & stand)	2478



TriFlash Shoe Lock

The TriFlash Shoe Lock is similar to the original TriFlash Bracket but features an adjustable 'screw locking' shoe mount which offers an additional locking mechanism to work along side the built in method used on a flashgun. The dimensions of the hotshoe connector on the bottom of each flashgun can vary from one to another, however the TriFlash Shoe Lock can comfortably accommodate these variances.



Features

- ▶ Attach up to three flashguns
- ▶ Screw locking
- ▶ Can be mounted onto a standard brass spigot
- ▶ Umbrella socket

Specifications

TriFlash Shoe Lock	Code
TriFlash Shoe Lock	2423



TriFlash Sync

The TriFlash Sync is identical to the TriFlash Shoe Lock but with the added benefit of a built in sync system allowing the photographer to fire up to three flashguns from one triggering device.

The sync bracket can be fired by either the built in slave cell or via a triggering device plugged into the built in X sync/PC sync socket. The built in slave cell can be adjusted to allow for none, 1, 2 or 3 pre flashes if required.

The TriFlash Sync is shipped with a 3.5mm to 3.5mm mono jack cable and a 3.5mm mono jack to PC Sync cable to attach third party triggering systems. There is also a dummy cold shoe included for photographers who only work with one or two guns and want to slide their trigger receiver (i.e. Pocket Wizzard) onto one of the spare shoe mounts.

Features

- ▶ Attach up to three flashguns
- ▶ Built in slave cell with pre-flash recognition
- ▶ X sync/PC sync socket for third party triggering devices

Specifications

TriFlash Sync	Code
TriFlash Sync	2455



TriFlash using built in slave cell



TriFlash with Pocket Wizard

Off Camera Cords

A range of extension cords to enable the photographer to position their battery operated flashguns up to 3m (9'9") away from the camera. Available in Canon, Nikon, Pentax, Olympus and Sony versions. A shorter 1m (3'3") cord is also available for Canon and Nikon only.



Features

- ▶ Single shoe mount
- ▶ Retains all TTL metering
- ▶ Position gun up to 3m from the camera
- ▶ Available to fit Canon, Nikon, Pentax, Olympus and Sony

Specifications

Off Camera Cords 3m	Code
Single eTTL Canon Pro (3m)	2424
Single iTTL Nikon Pro (3m)	2425
Single pTTL Pentax (3m)	2426
Single eTTL Olympus (3m)	2427
Single eTTL Sony (3m)	2428
Off Camera Cords 1m	Code
Single iTTL Nikon Pro (1m)	9901
Single eTTL Canon Pro (1m)	9902



Sync Block

The Sync Block (non TTL) is ideal for photographers who want the benefits of using a radio trigger but do not have a sync connection socket on their flashgun.

Simply attach the cast aluminium sync block to the bottom of the flashgun and then plug the sync cable attached to the block into the remote radio trigger receiver unit. The flashgun can now be fired via the remote transmitter fitted to the hotshoe on the top of the camera.

The Lastolite sync block is compatible with any radio trigger featuring a PC sync/X sync socket.



Features

- ▶ Non TTL
- ▶ For flashguns without an X sync/PC sync socket

Specifications

Sync Block for remote triggers	Code
Sync Block for remote triggers	2419



EzyBox Speed-Lite

The Ezybox Speed-Lite is a 22cm x 22cm mini softbox which attaches directly onto a flashgun whether it's on or off camera.

The softbox folds in the same way as our other highly successful Ezybox softboxes making it an ultra portable solution for busy photographers. The Ezybox Speed-Lite also features an inner and outer diffusion layer (both removable) which delivers an unrivalled softness of light from such a small softbox.



EzyBox Speed-Lite on camera



EzyBox Speed-Lite off camera hand held

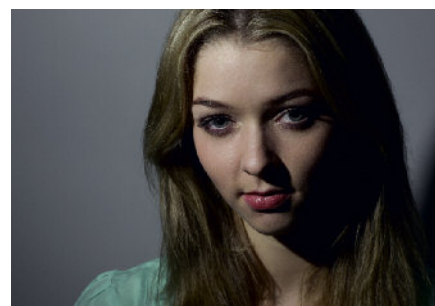


Features

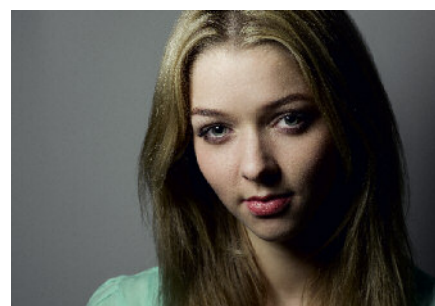
- ▶ Assembled in seconds
- ▶ Removable inner and outer diffuser
- ▶ Folds flat for easy storage

Specifications

Ezybox Speed-Lite	Code
Ezybox Speed-Lite	2420



Without EzyBox Speed-Lite



With EzyBox Speed-Lite

Micro Apollo MkII



Without Softbox



With Softbox



Features

- ▶ The hot-shoe flash softbox
- ▶ Folds flat into a camera bag
- ▶ Fits most makes of flashgun

Specifications

Micro Apollo	Size	Code
Micro Apollo MkII 45*	W: 20cm x H: 13cm (8" x 5.5")	2210
Micro Apollo MkII 60*	W: 25cm x H: 18cm (10" x 7")	2214

* Not compatible with hammerhead style flashguns

Joe McNally Intro

Joe McNally is an internationally acclaimed photographer whose career has spanned 30 years and included assignments in over 50 countries. He has shot cover stories for TIME, Newsweek, Fortune, New York, Entertainment Weekly, The New York Times Sunday Magazine, and Men's Journal. He has been a contract photographer for Sports Illustrated, a staff photographer at LIFE, and, currently, an ongoing 23-year contributor to the National Geographic. Joe was listed by American Photo as one of the 100 Most Important People in Photography and described by the magazine as "perhaps the most versatile photojournalist working today". He has been honored as a member of Kodak-PDN Legends Online, as well as being a Nikon Legend Behind the Lens. In 2010, he was voted as one of the 30 most influential photographers of the decade in an industry wide Photo District News survey.



Joe McNally TriGrip

The Joe McNally 90cm TriGrip system features a 2-stop diffuser panel, a TriFlip reflector sleeve and a window mask sleeve. The reflector sleeve simply slides over the diffuser panel to create a bounce reflector and offers four different surfaces – Silver/Sunfire and Sunlite/Soft Silver. The second sleeve is all black with a 54cm x 38cm cut out window opening which reveals the diffuser panel underneath, creating a rectangular shoot through panel for battery operated flashguns. Also included with this sleeve are two additional black panels which Joe uses to alter the size and shape of the window so he can control how much and where the light falls on the subject.

Features

- ▶ Can be held with just one hand
- ▶ Use as a reflector or a diffuser
- ▶ Shoot through mask for ultimate control

Specifications

Joe McNally TriGrip	Code
Joe McNally TriGrip Kit	3996JM



Lighting stand and Ezybox bracket not included



Lighting stand and Ezybox bracket not included

Joe McNally Ezybox

The Joe McNally Ezybox Hotshoe is a new addition to our highly acclaimed softbox range for battery operated flashguns. Unlike our existing range of Ezybox Hotshoe softboxes, the Joe McNally version features a white interior rather than silver which offers a slightly softer creamier level of diffusion. As with our other softboxes this version features two removable diffusion layers and is compatible with our softbox accessories such as Grids and the Creative Mask Strips.



Features

- ▶ Adjustable bracket for different sized flash guns
- ▶ Inner and outer diffuser
- ▶ White interior

Specifications

Joe McNally Ezybox Hotshoe	Code
Joe McNally White Ezybox Hotshoe 54cm x 54cm (21" x 21")	2462JM



Double diffusion layer

Joe McNally TriFlash

The Joe McNally TriFlash is the latest addition to our successful TriFlash range. Joe's version of this product features unique rotating shoe mounts which allow him to position his flashguns so that the IR receiver on the guns are always pointing to camera position, ensuring reliable off camera flash triggering, particularly in bright conditions where Joe sometimes finds IR triggering difficult.



Features

- ▶ Attach up to three flashguns
- ▶ Rotating shoe mounts
- ▶ Screw locking

Specifications

Joe McNally Rotating TriFlash	Code
Joe McNally Rotating Locking TriFlash Tilthead	2457JM



Joe McNally Skylite

The Joe McNally Skylite contains a standard Lastolite 1.1m x 1.1m aluminium frame plus a new 'slide on' 2 stop diffuser panel. The Skylite also includes a telescopic crossbar assembly which can support the Skylite frame and up to 4 flashguns on sliding shoe mounts which can be spaced apart or grouped together. The crossbar is fully adjustable so Joe can select the angle of the flashguns and their distance from the diffusion panel. The assembly easily attaches to a standard light stand (not included) making it an extremely versatile shoot through panel for strobists.



Features

- ▶ Aluminium lightweight frame
- ▶ Attach up to 4 flashguns
- ▶ Fully adjustable

Specifications

Joe McNally Skylite Kit	Code
Joe McNally Skylite Kit	81145JM



Joe McNally UpLite

The Joe McNally UpLite is similar to the standard Lastolite UpLite 'cool tone' but also includes a 2 stop diffuser panel. Joe uses the standard UpLite configuration as an adjustable bounce reflector, however the additional diffuser panels turns the UpLite into an even more versatile product. Joe replaces the top reflector panel with the diffuser panel and then shoots one or more of his flashguns through the panel which gives him a fully controllable diffused fill light.



Features

- ▶ Self supporting reflector/diffuser panels
- ▶ 30 to 80 degree positions
- ▶ Ideal for outdoor use
- ▶ Waterproof base bottle-top

Specifications

Joe McNally UpLite Kit	Code
Joe McNally UpLite Kit	3497JM

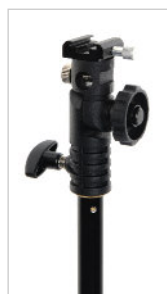


Umbrella Kits

The umbrella kit comes in two sizes featuring either a 80cm (34") or 100cm (40") Lastolite All in One Umbrella (see page 32). The kit includes the Umbrella, 4 section stand, Hotshoe Tilthead and padded shoulder bag. The All in One Umbrella can be used as a silver or white bounce, a silver and white bounce or shoot through.



2476



2422



2402

Features

- ▶ Truly portable solution
- ▶ All in one solution
- ▶ Includes a padded shoulder bag

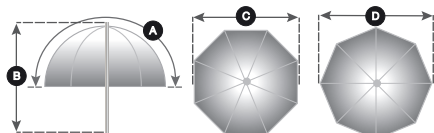
Specifications

Umbrella Kits	Code
80cm (34") kit with 2402 Tilthead*	2475
100cm (40") kit with 2402 Tilthead*	2476
80cm (34") kit with 2422 Tilthead Shoe Lock*	2473
100cm (40") kit with 2422 Tilthead Shoe Lock*	2474

* See page 36 for All In One Umbrella specifications

Brolly Grip

The ultimate light modifier for the photographer who needs to be mobile. The new Brolly Grip is a unique hand held bracket which supports the flashgun in a horizontal position along the shaft of an umbrella. A 20" translucent umbrella is included in the kit to create a compact, quick to assemble 'shoot through' solution for photographers.



Features

- ▶ Flashgun close to umbrella shaft
- ▶ Hand held or used on a stand

Specifications

Brolly Grip Handle				Code
Brolly Grip handle				2125
Umbrellas		A	D	Code
Translucent 50cm (20")	66cm (26")	58cm (23")		2123
Translucent - TriFold*	112cm (44")	98cm (39")		2127
Brolly Grip Kits				Code
Brolly Grip kit with translucent umbrella 50cm (20")				2126
Off Camera Cords 1m				Code
Single iTTL Nikon Pro (1m)				9901
Single eTTL Canon Pro (1m)				9902

*For use with flashguns only



2127 TriFold



8:1 Umbrella

The 8:1 is the ultimate umbrella offering more versatility than any other umbrella on the market. The different combinations are as follows:

- White bounce
- Silver bounce
- Shoot through
- Shoot through with square mask
- Shoot through box
- Shoot through box with square mask
- Umbrella box (bounce) with silver interior
- Umbrella box (bounce) with white interior

The 8:1 can be used with studio flash and battery operated flashguns.



White Bounce



Silver Bounce



Shoot Through



Shoot Through with square mask



Shoot Through Box



Shoot Through Box with square mask

Features

- ▶ Umbrella and softbox functionality
- ▶ 8mm shaft
- ▶ Includes carry pouch for storage when not in use



Umbrella Box (Bounce) with silver interior



Umbrella Box (Bounce) with white interior

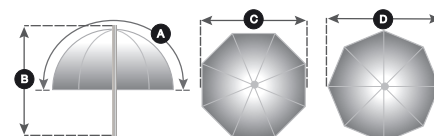
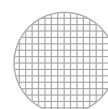
Silver



White Translucent
1 Stop (shoot through)



White Translucent
2 Stop (umbrella box)



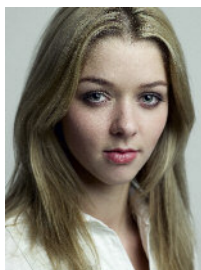
Specifications

8:1 Umbrella	A	B	C	D	Code
8:1 Umbrella	127cm (50")	75cm (30")	99cm (39")	105cm (41")	4538

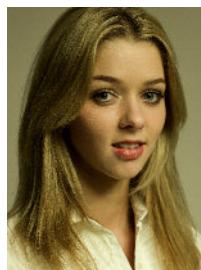
Umbrellas - Reversible



Silver/Gold



White



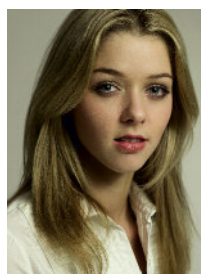
Gold



Sunfire/Silver



Silver



Sunfire

Specifications

Colour	A	B	C	D	Colour Temp.	Light Loss	Code
Sunfire/Silver	127cm (50")	75cm (30")	103cm (41")	112cm (44")	4750k/5600k	-0.5/-1.3f	4536
Silver/Gold	127cm (50")	75cm (30")	103cm (41")	112cm (44")	5600k/3800k	-0.6/-1.2f	4534
Silver/White	127cm (50")	75cm (30")	103cm (41")	112cm (44")	5600k	-0.5/-1.3f	4531

Features

- ▶ Reversible covers
- ▶ 4 different reflective surfaces
- ▶ Includes carry case
- ▶ 8mm shaft

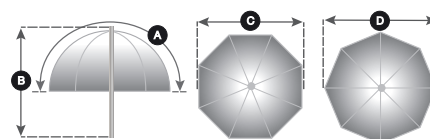
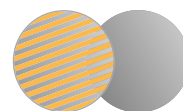
Silver / White



Silver / Gold



Sunfire / Silver



Umbrellas - Dual Duty



Shoot Through/White Bounce



White



White Bounce with Black behind



Pair

Specifications

Colour	A	B	C	D	Colour Temp.	Light Loss	Code
Black/White	92cm (36")	56cm (22")	72cm (28")	78cm (31")	5600k/5450k	-1.3f	3221

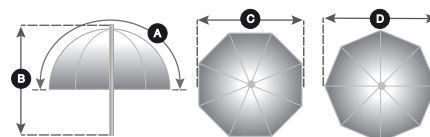
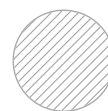
Features

- ▶ Can be used as a shoot through or translucent white bounce with black surface behind
- ▶ Includes carry case
- ▶ 8mm shaft

Black



White Translucent 1 Stop



Lighting Control

Umbrellas - Dual



3223/4523



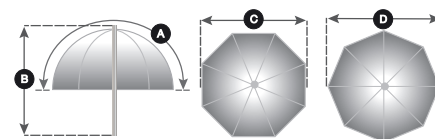
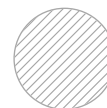
Features

- ▶ Removable outer cover
- ▶ Translucent shoot through
- ▶ Translucent white bounce with silver behind
- ▶ Available in two sizes – 80cm & 100cm
- ▶ Umbrella spokes are concealed behind translucent fabric
- ▶ 8mm shaft

Black / Silver



White Translucent 1 Stop



Specifications

Colour	A	B	C	D	Colour Temp.	Light Loss	Code
Black/Silver White	92cm (36")	56cm (22")	72cm (28")	78cm (31")	5600k 5450k	-0.3f (bounce) -0.6f (shoot through)	3223
Black/Silver White	127cm (50")	75cm (30")	93cm (37")	99cm (39")	5600k 5450k	-0.3f (bounce) -0.6f (shoot through)	4523

Umbrellas - All in One



4537



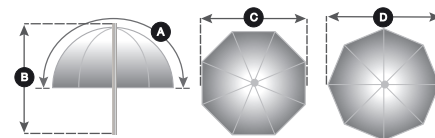
Features

- ▶ Removable covers
- ▶ Translucent shoot through
- ▶ Translucent white bounce
- ▶ White bounce with silver behind
- ▶ Silver bounce
- ▶ Available in two sizes – 80cm & 100cm
- ▶ 8mm shaft

Silver



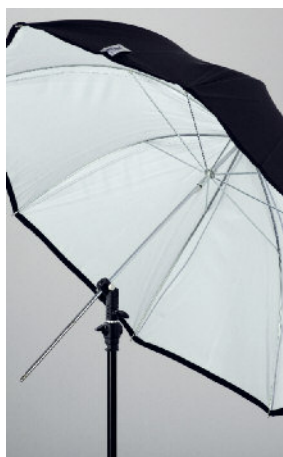
White Translucent 1 Stop



Specifications

Colour	A	B	C	D	Colour Temp.	Light Loss	Code
Silver/White	127cm (50")	75cm (30")	99cm (39")	105cm (41")	5600k 5450k	-0.6f (shoot through) -0.2f (silver white bounce) -0.1f (white bounce) -0.2f (silver bounce)	4537
Silver/White	92cm (36")	56cm (22")	72cm (28")	78cm (31")	5600k 5450k	-0.6f (shoot through) -0.2f (silver white bounce) -0.1f (white bounce) -0.2f (silver bounce)	3237

Umbrellas - Essentials



3212/4512 Bounce PVC



2123/3707/4507 White Translucent



4503 Silver Bounce

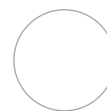
Specifications

Style	Colour	A	B	C	D	Colour Temp.	Light Loss	Code
Translucent	White	66cm (26")	43cm (17")	53cm (21")	58cm (23")	5450k	-0.9f	2123
Translucent	White	92cm (36")	56cm (22")	72cm (28")	78cm (31")	5450k	-0.9f	3207
Translucent	White	127cm (50")	75cm (30")	99cm (39")	105cm (41")	5450k	-0.7f	4507
Bounce	Silver	92cm (36")	56cm (22")	72cm (28")	78cm (31")	5600k	-0.18f	3203
Bounce	Silver	127cm (50")	75cm (30")	99cm (39")	105cm (41")	5600k	-0.2f	4503
Bounce PVC	White	92cm (36")	56cm (22")	76cm (30")	82cm (32")	5450k	-0.9f	3212
Bounce PVC	White	127cm (50")	75cm (30")	94cm (37")	100cm (39")	5450k	-0.7f	4512
Jumbo Bounce	White	190cm (75")	117cm (46")	154cm (61")	160cm (63")	5600k	-0.8f	5821
Jumbo Bounce	White	244cm (96")	150cm (59")	180cm (71")	186cm (73")	5600k	-0.8f	7921

Features

- ▶ White translucent shoot through
- ▶ Silver bounce
- ▶ White PVC bounce
- ▶ Extra large white bounce
- ▶ Available in various sizes
- ▶ 8mm shaft

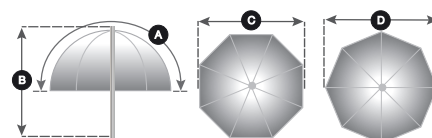
White



Silver

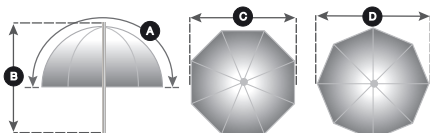


White Translucent 1 Stop



Umbrella Box

The Umbrella Box is incredibly simple to assemble, fit and use. Its unique lighting effect is achieved by first bouncing the light off the back of the Umbrella Box and then diffusing it through the coated diffuser panel. Simply insert the flash-head reflector into the Umbrella Box and close the zipped openings for a quick set up.



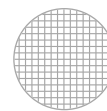
Features

- ▶ Quick to set up - location or studio
- ▶ Universal fitting onto any light
- ▶ Lightweight and compact

Specifications

Umbrella Box	A	D	Code
8mm shaft 1m (40")	127cm (50")	103cm (41")	3226
7mm shaft 1m (40")	127cm (50")	103cm (41")	3227
Umbrella Box and Boom Clamp			Code
1.5m (60")	190cm (75")	160cm (63")	5826
2m (80")	244cm (96")	186cm (73")	7926

White Translucent 2 Stop



Lighting Control

Cubelite™

The Cubelite™ allows the photographer to control the lighting of products, minimizing shadows and isolating the subject from the background.

It's never been easier to take quick and crisp product shots on location or in the studio. The Cubelite™ has been enhanced in a number of ways so as to improve its utility:

- Background clips mounted in the roof for additional height.
- Open base for even floor surface, easier to fold, and enables positioning of cube over immovable items e.g. plants
- Front opens to edge of Cubelite™ for wider viewing angles.
- One new size - 45cm x 45cm (18" x 18")

The Cubelite™ offers a true location studio which instantly pops open ready for work.



Features

- ▶ Ideal for product shots
- ▶ Shadowless lighting
- ▶ Perfect for digital or film use
- ▶ Isolates subject
- ▶ Collapses to a third of its original size



Specifications

Cubelite™	Size	Code
Cubelite™	45cm (18")	1886
Cubelite™	58cm (2')	2486
Cubelite™	90cm (3')	3686
Cubelite™ with removable back	90cm (3')	3687
Cubelite™	120cm (4')	4886
Cubelite™	1.5m x 1.5m x 2.1m (5' x 5' x 7')	5287
Cubelite™	2m x 2m x 2.1m (6'6" x 6'6" x 7')	6687

Cubelite™ Kits

The Cubelite™ Kit contains everything you need to take professional photographs with controlled shadows - just add your digital camera! The Cubelite™ kit now includes a lighting guide by Michael Freeman.



Fluorescent Light



Features

- ▶ Kits have all you need to take professional product photographs
- ▶ Just add your digital camera!
- ▶ Available in 5 different sizes
- ▶ Available with tungsten or fluorescent lighting



Specifications

Cubelite™ Kit Tungsten	Cubelite™	Light stand	Tungsten Light	500w Bulb	Fluorescent Light	85w Bulb	Silver / White Reflector	White Vinyl Background	White Background Paper (11m roll)	lighting guide	Code
58cm (2') Kit	1	1	1	1	-	-	1	1	-	1	3611
90cm (3') Kit	1	1	1	1	-	-	1	1	-	1	3601
90cm (3') Kit with removable back	1	1	1	1	-	-	1	1	-	1	3612
120cm (4') Kit	1	1	1	1	-	-	1	1	-	1	3613
1.5m x 1.5m x 2.1m (5' x 5' x 7') Kit	1	4	4	4	-	-	-	-	1	1	3615
2m x 2m x 2.1m (6'6" x 6'6" x 7') Kit	1	4	4	4	-	-	-	-	1	1	3614
Cubelite™ Kit Fluorescent	Cubelite™	Light stand	Tungsten Light	500w Bulb	Fluorescent Light	85w Bulb	Silver / White Reflector	White Vinyl Background	White Background Paper (11m roll)	lighting guide	Code
58cm (2') Kit	1	1	-	-	1	1	1	1	-	1	3661
90cm (3') Kit	1	1	-	-	1	1	1	1	-	1	3662
120cm (4') Kit	1	1	-	-	1	1	1	1	-	1	3663
1.5m x 1.5m x 2.1m (5' x 5' x 7') Kit	1	4	-	-	4	4	-	-	1	1	3664
2m x 2m x 2.1m (6'6" x 6'6" x 7') Kit	1	4	-	-	4	4	-	-	1	1	3665

Studio Cubelite™

The Studio Cubelite™ is the ultimate solution for product photography and takes our highly successful Cubelite™ concept even further. It allows for control of the light from below and all other directions allowing the photographer to give products that floating look with no shadows if desired. The tensioned diffuser fabric means the reflections on even the most reflective surface are kept to an absolute minimum, whilst the generous front opening can be closed to mask reflections from the camera/operator as well. The patented design also allows you to control the light from underneath by pointing the source up or down into the base unit giving different light distribution effects and creating graduated backgrounds if required.

Features

- ▶ 360 degree lighting
- ▶ Full shadow control
- ▶ Reflection control
- ▶ Collapses flat in minutes with simple tensioning rods
- ▶ Features a unique base diffusion system
- ▶ Includes a diffused film to create the translucent background
- ▶ Includes an acrylic top surface for heavier items up to 8kg
- ▶ Minimum room height required for the 100cm Studio Cubelite kit is 240cm (7'8")



Specifications

Studio Cubelite™ Size	Code
Studio Cubelite™ 70cm x 70cm x 155cm (28" x 28" x 61")	8824
Studio Cubelite™ 100cm x 100cm x 185cm (39" x 39" x 73")	8836

Specifications

Studio Cubelite™ Accessories	Code
Replacement translucent film for the 8824	8831
Replacement translucent film for the 8836	8834

Specifications

Studio Cubelite™ kit Tungsten	Studio Cubelite™	Tungsten Light	500w Bulb	Fluorescent Light	85w Bulb	Reflector For Light	Light Stand	Backlight Light Stand	Soft Box	Code
70cm (28") Studio Cubelite™ Kit	1	2	2	-	-	2	1	1	1	8825
100cm (39") Studio Cubelite™ Kit	1	2	2	-	-	2	1	1	1	8837
Studio Cubelite™ kit Fluorescent	Studio Cubelite™	Tungsten Light	500w Bulb	Fluorescent Light	85w Bulb	Reflector For Light	Light Stand	Backlight Light Stand	Soft Box	Code
70cm (28") Studio Cubelite™ Kit	1	-	-	2	2	2	1	1	1	8828
100cm (39") Studio Cubelite™ Kit	1	-	-	2	2	2	1	1	1	8840

LiteTable

The Lastolite still life table "LiteTable" will revolutionize your product photography with its ease of use and light control. It can be assembled in minutes (without the use of any screws, bolts or allen keys!) and folds flat into a handy carry case when not in use, making it ideal for occasional use and location work. The unique patented design allows the photographer to control the light distribution underneath the table by positioning the light in different ways, creating graduated backgrounds or a completely even tone. With gels the creative possibilities are endless. Many of these techniques have previously been difficult with conventional light tables as they have open sides underneath.



With illuminted LiteTable base



Without illuminted LiteTable base

Features

- ▶ Available in two sizes
- ▶ Folds flat
- ▶ Includes an acrylic top surface for heavier items up to 8kg
- ▶ Includes a translucent background Film to create an infinity curve

Specifications

LiteTable	Size	Code
LiteTable	70cm x 70cm x 150cm (28" x 28" x 60")	7824
LiteTable	100cm x 100cm x 180cm (39" x 39" x 72")	7836
LiteTable Accessories		Code
Replacement translucent film for the 7824		8830
Replacement translucent film for the 7836		8833



ePhotomaker

The ePhotomaker has been designed for eBay and other online auction users looking to improve their images. Having well-lit photos with accurate colours can make the difference between selling or not selling a product. The ePhotomaker features a diffusing fabric on one side to soften the light and a reflector to fill in the shadows on the other side. All you need to provide is an ordinary domestic desk lamp. The ePhotomaker kit includes an EzyBalance grey card to control colours and exposure resulting in photographs with crisp white backgrounds. The kit also includes a tabletop tripod.



Features

- ▶ Ideal for selling products on the web
- ▶ Supplied with a blue gel to simulate daylight lighting conditions
- ▶ Collapsible - easy to store
- ▶ Built in reflector on one side, diffuser on the other side
- ▶ Kit contains ePhotomaker, EzyBalance, Blue daylight gel, clips and Tripod

Specifications

ePhotomaker	Code
ePhotomaker Small Kit	2484
ePhotomaker Small Kit (Black interior)	2482
ePhotomaker Large Kit	3684

ePhotomaker kit contains:

- ePhotomaker
- EzyBalance 'Point and Shoot' (grey surface only)
- Tabletop tripod
- Blue daylight gel with clips

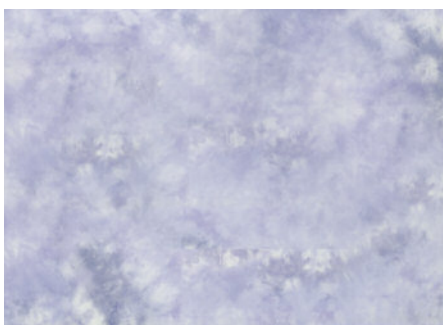
Dyed Background Swatches

The washable pallet of colours is available in a number of different formats:

- Sheet/Curtain (muslin) 3m x 3.5 m (10' x 12') or 3m x 7m (10' x 24')
- Collapsible reversible 1.5m x 1.8m (5' x 6')
- Collapsible reversibles with train 1.8m x 2.1m x 1.5m (6' x 7' x 5')



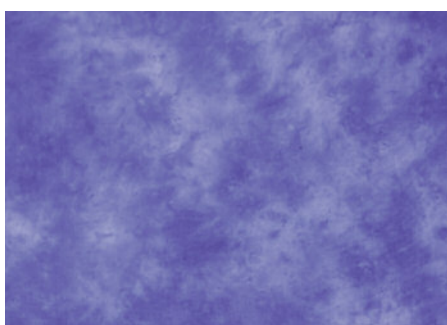
51 Ohio*



48 Maine



49 Colorado*



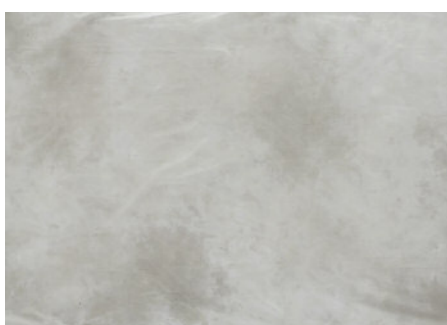
46 Florida



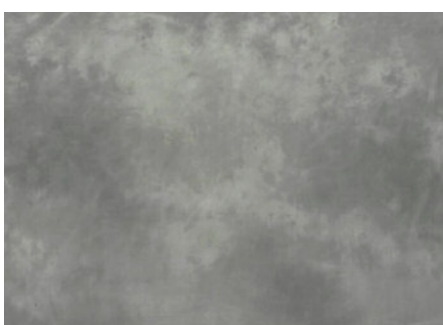
50 Wyoming*



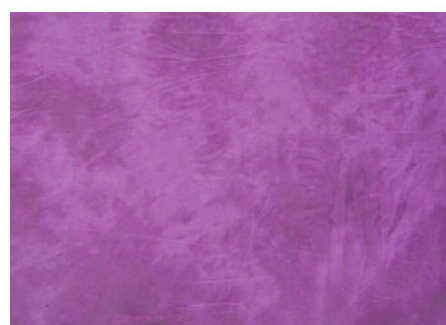
53 Mississippi



41 Dakota*



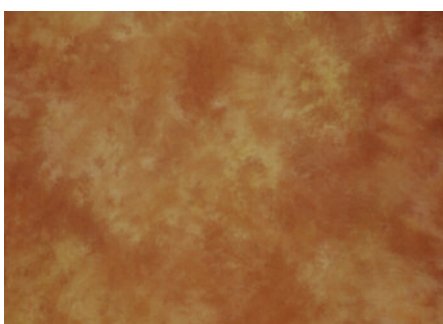
40 Washington*



55 New York*



54 Arizona*



42 Kentucky



43 Virginia*

* Re-blended for a subtler less contrasting finish.

Dyed Curtain/Muslin Backgrounds

Especially useful for kids, pets and sports - this extensive range of curtain backgrounds gives photographers the colours and patterns to express their creativity.

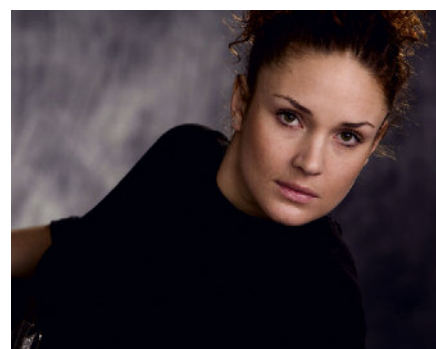
The backgrounds can be draped over props or bunched for added texture. They are all 3m (10') wide and come with a handy tote bag. They have a hem along the shortest edge to insert a pole for support.

Washables

Fully machine washable at 40°C (105°F) in a large washing machine, these backgrounds are for photographers who use backgrounds extensively. The colours take their inspiration from American states.

Features

- ▶ This range is available in 3m x 3.5m (10' x 12') and 3m x 7m (10' x 24')
- ▶ Especially designed for use with kids, pets and sports
- ▶ Support systems available
- ▶ Extensive colour range



Specifications

Curtain/Muslin Backgrounds	Size: 3m x 3.5m (10' x 12') Code	Size: 3m x 7m (10' x 24') Code
Washington	7740	7840
Dakota	7741	7841
Kentucky	7742	7842
Virginia	7743	7843
Florida	7746	7846
Maine	7748	7848
Colorado	7749	7849
Wyoming	7750	7850
Ohio	7751	7851
Mississippi	7753	7853
Arizona	7754	7854
New York	7755	7855

Backgrounds

Dyed Knitted Ezycare Backgrounds

The dyed knitted Ezycare curtain backgrounds come in six popular colours and are made from a knitted fabric which can be draped or stretched to instantly remove any creases. Fully machine washable at 40°C (105°F) in a large washing machine, these backgrounds are available in two sizes 3m x 3.5m and 3m x 7m. Each background is supplied in a handy tote bag and features a hem on the 3m edge to insert a pole for support. A set of 4 clips are included to secure the background when stretched between the stands of a support system. Two sand bags are also included to secure the floor section of the background.

Features

- ▶ Available in 3m x 3.5m (10' x 12') and 3m x 7m (10' x 24')
- ▶ Six colours
- ▶ Creases can be removed by stretching the fabric
- ▶ Support systems available



Specifications

Dyed Knitted Ezycare Backgrounds	Size: 3m x 3.5m (10' x 12') Code	Size: 3m x 7m (10' x 24') Code
Washington	7540	7640
Dakota	7541	7641
Florida	7546	7646
Maine	7548	7648
Wyoming	7550	7650
Arizona	7554	7654



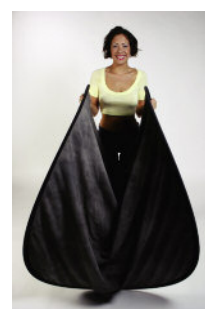
Dyed Collapsible Reversible Backgrounds

This extensive range of collapsible backgrounds gives photographers the colours and patterns to express their creativity.

The 1.8m x 2.15m (6' x 7') backgrounds with train have been modified and now use Lastolite's knitted 'crease resistant' fabrics making it even easier to work with our full length collapsible backgrounds.

Features

- ▶ Crease resistant fabric
- ▶ The ultimate location accessory
- ▶ Collapses to a third of its original size
- ▶ Ideal for portraits on location or in the studio
- ▶ Can be used for solo portraits or smaller groups
- ▶ Zip up bag
- ▶ Reversible
- ▶ Combine with Lastolite's background support system 1109/1116 on page 50

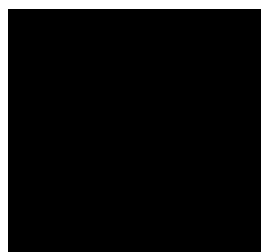


Specifications

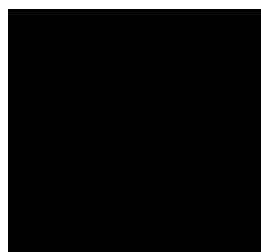
Dyed Collapsible Reversible Backgrounds	1.5m x 1.8m (5' x 6') Code	1.8m x 2.15m (6' x 7') with extra 1.5m (5') train Code
Florida / Maine	56FM	67FM
Washington / Dakota	56WD	67WD
Wyoming / Mississippi	56WU	67WU
Virginia / Kentucky	56VK	67VK
New York / Ohio	56NO	67NO
Arizona / Colorado	56CA	67CA

Backgrounds

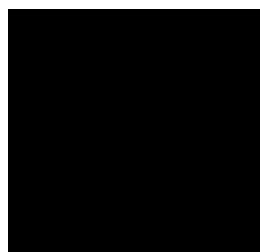
Plain Background Swatches



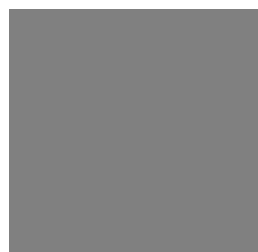
Super Black



Black Velvet



Black



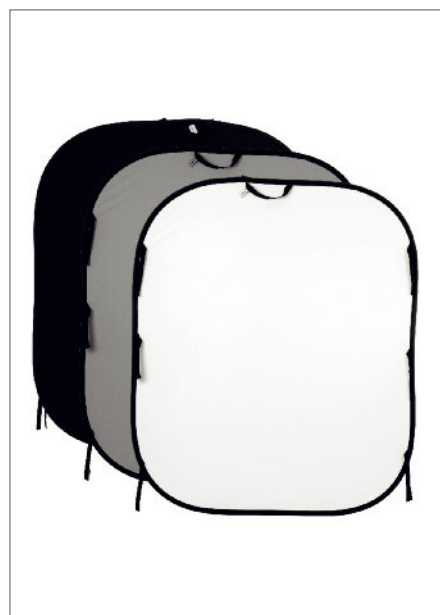
Mid Grey



White

Plain Collapsible Backgrounds

A compact range of popular reversible colours (except 5620) all made from crease resistant fabrics dyed a single colour for passport, ID, and other uses.



Features

- ▶ Crease resistant
- ▶ Single colours
- ▶ Reversible
- ▶ Collapsible
- ▶ Ideal for passport, ID and corporate photos



Specifications

Plain Collapsible Backgrounds	Size	Code
Black / White	1.5m x 1.8m (5' x 6')	5621
White	1.5m x 1.8m (5' x 6')	5620
Black Velvet	1.5m x 1.8m (5' x 6')	5602
Black / Mid Grey	1.5m x 1.8m (5' x 6')	56GB
White / Mid Grey	1.5m x 1.8m (5' x 6')	56GW
Black / White	1.8m x 2.15m (6' x 7')	5921
Black / White with train	1.8m x 2.15m (6' x 7')	6701
Super Black with train	1.8m x 2.15m (6' x 7')	67SB
Black / Mid Grey	1.8m x 2.15m (6' x 7')	67GB
White / Mid Grey	1.8m x 2.15m (6' x 7')	67GW
Black / White	1.8m x 2.75m (6' x 9')	6921

Plain Knitted Ezycare Backgrounds

Two plain colours have been added to the Ezycare crease resistant range of background curtains.

The black and white curtains are available in two sizes 3m x 3.5m (10' x 12') and 3m x 7m (10' x 24') featuring a looped hem on the 3m edge to insert a pole for support.

Features

- ▶ Available in 3m x 3.5m (10' x 12') and 3m x 7m (10' x 24')
- ▶ Creases can be removed by stretching the fabric
- ▶ Support systems available (page 50)
- ▶ Machine washable at 40°C (105°F)

Specifications

Plain Knitted EzyCare Backgrounds	Code
White 3m x 3.5m (10' x 12') Ezycare	7501
Black 3m x 3.5m (10' x 12') Ezycare	7502
White 3m x 7m (10' x 24') Ezycare	7601
Black 3m x 7m (10' x 24') Ezycare	7602



Backgrounds

Paper Roll Backgrounds



9001/9101/9201 Super White



9002 Heaven



9004 Corn



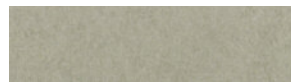
9005 Navy



9006 Wine



9008 Red



9012 Arctic Grey



9013 Nugget



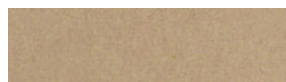
9016 Conker



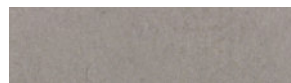
9020/9120/9220 Black



9024 Marigold



9025 Sandstone



9026 Flint



9027 / 9127 Shadow Grey



9029 Amethyst



9030 Ocean



9031 Kingfisher



9035 Green Grass



9037 Gala Pink



9038 Primrose



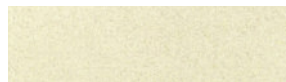
9046 Leaf Green



Aztec 9047



9050 White



9051 Ivory



9054 Graphite



9058 Royal



9060 Pewter



9062 Purple



9065 Regal Blue



9071 Yellow



9073 Chromakey Green

Features

- ▶ Support systems available
- ▶ Available in 3 sizes
- ▶ Comprehensive range of colours
- ▶ Totally crease free
- ▶ Disposable if marked
- ▶ Cut your own custom lengths

Specifications

Paper Roll Backgrounds	
Size: 2.75m x 11m (9' x 35')	
	Code
Super White	9001
Heaven	9002
Corn	9004
Navy	9005
Wine	9006
Red	9008
Arctic Grey	9012
Nugget	9013
Conker	9016
Black	9020
Marigold	9024
Sandstone	9025
Flint	9026
Shadow Grey	9027
Amethyst	9029
Ocean	9030
Kingfisher	9031
Grass Green	9035
Gala Pink	9037
Primrose	9038
Leaf Green	9046
Aztec	9047
White	9050
Ivory	9051
Graphite	9054
Royal	9058
Pewter	9060
Purple	9062
Regal Blue	9065
Yellow	9071
Chromakey Green	9073
Size: 1.37m x 11m (4½' x 35')	
	Code
Super White	9101
Black	9120
Shadow Grey	9127
Size: 3.56m x 30m (11½' x 100')	
	Code
Super White	9201
Black	9220

EzyRoll Background Support

The EzyRoll background support system is a new concept for supporting seamless background papers. Built around a unique air filled support stand the EzyRoll can be used on location or in the studio.

The background paper is simply loaded into the aluminium canister which then sits on top of the air filled support stand. The air inside the stand works in the opposite way to a traditional air cushioned lighting stand, so it actually pushes the loaded canister up to your desired height. To change the paper simply release the lock on the stand and slowly pull down the canister against the force of the air vacuum. When the canister comes down to waist level, lock the stand to hold its position and then reload the new paper. When complete release the lock and the paper will slowly rise into position.

Unlike many of its competitors the EzyRoll system is very safe and can easily be operated by one person and does not require the use of ladders.

The EzyRoll can be used as a free standing solution or as a more permanent studio fixture using the optional wall brackets.

Features

- ▶ Mobile or permanent studio solutions
- ▶ One person operation
- ▶ Simple click in connection
- ▶ Built in paper brake

Specifications

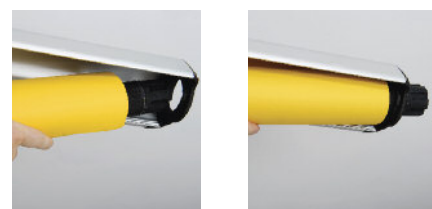
EzyRoll	Code
EzyRoll 2.75m (9') mobile kit	1135
EzyRoll wall brackets	1141
EzyRoll stand	1140



Wall mounted solution



Pulley chain operation



Free standing solution

Backgrounds

HiLite Backgrounds

The HiLite backgrounds range allows the photographer to work in a way that was extremely difficult to achieve in the past, 'high key' photography on location and in restrictive spaces. By rear lighting the white background itself there is no longer a need to use a background light behind the subject. Furthermore, because the background is actually illuminated it means the subject can stand virtually right in front of it without casting a shadow. The HiLite backgrounds also works as a large rear softbox and illuminates the subject as well, meaning you can use just one other flash head to light the subject from the front. What's more, the whole thing is collapsible.

Features

- ▶ Available in four sizes 1.4m x 1m (4'6" x 3'6"), 1.5m x 2.15m (5' x 7'), 1.8m x 2.15m (6' x 7') and 2.5m x 2.15m (8' x 7')
- ▶ Can be rotated and used on its short or long edge
- ▶ An optional 'wipe clean' vinyl train is also available that attaches to either edge for full length work
- ▶ Can be suspended on our 1108 background support system
- ▶ Can even be used as a very large softbox
- ▶ Free standing



Specifications

HiLite Background	Code
HiLite 1.4m x 1m (4'6" x 3'6")	8990
HiLite 1.5m x 2.15m (5' x 7')	8857
HiLite 1.8m x 2.15m (6' x 7')	8867
HiLite 2.5m x 2.15m (8' x 7')	8878
Cleanable Vinyl Train	Code
For the 1.5m x 2.15m (5' x 7') HiLite	8858
For the 1.8m x 2.15m (6' x 7') HiLite	8868
For the 2.5m x 2.15m (8' x 7') HiLite	8879



8878



8990



HiLite Bottletops

The bottle-top background covers with a train now make the HiLite product range even more versatile. These backgrounds stretch over the HiLite and allow the photographer to quickly switch from a high key to a low or mid key environment. When using the covers the HiLite should not be illuminated from the rear.



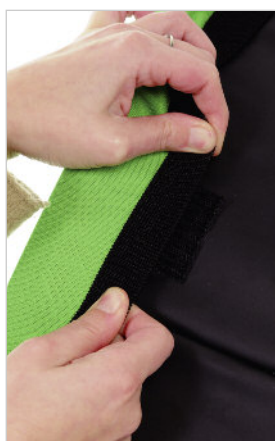
Black

Super Black

Grey

Chromakey Blue

Chromakey Green



Features

- ▶ Switch from high key to mid or low key in an instant
- ▶ Designed to fit the 1.5m x 2.15m (5' x 7') and 1.8m x 2.15m (6' x 7') HiLites
- ▶ Available in four colours

Specifications

HiLite Bottletops	Code
Black 1.5m x 2.15m (5' x 7')	8702
Super Black 1.5m x 2.15m (5' x 7')	8703
Grey 1.5m x 2.15m (5' x 7')	8770
C'Key Blue 1.5m x 2.15m (5' x 7')	8788
C'Key Green 1.5m x 2.15m (5' x 7')	8781
Black 1.8m x 2.15m (6' x 7')	8802
Super Black 1.8m x 2.15m (6' x 7')	8803
Grey 1.8m x 2.15m (6' x 7')	8870
C'Key Blue 1.8m x 2.15m (6' x 7')	8888
C'Key Green 1.8m x 2.15m (6' x 7')	8881

Background supports

Superwhite Vinyl Backgrounds

Lastolite's 'wipe clean' Superwhite vinyl background can literally be used over and over again. Simply wipe away any dirt or footprints at the end of your shoot, then roll it back up ready for next time! It couldn't be easier. Supplied on a roll the same width as our standard paper backgrounds (2.75m) the Superwhite vinyl can easily be suspended using our 1128 background support system.



Features

- ▶ Wipe clean
- ▶ Long lasting
- ▶ Ideal for 'high key' photography'
- ▶ 2.75m x 6m (9' x 20')

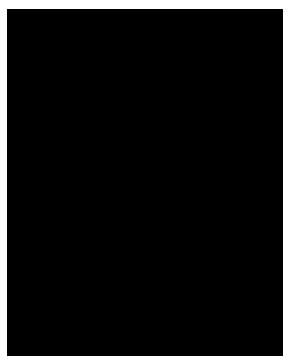
Specifications

Superwhite Vinyl Background	Code
Superwhite Vinyl Background	7761

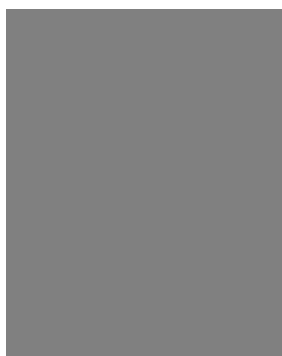


Coloured Vinyl Backgrounds

The vinyl backgrounds are also available in three colours.



7765



7770



7781

Features

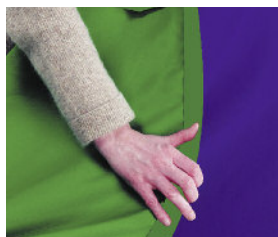
- ▶ Available in 3 colours
- ▶ 2.75m x 6m (9' x 20')
- ▶ Wipe clean
- ▶ Long lasting

Specifications

Coloured Vinyl backgrounds	Code
Black Vinyl Background	7765
Grey Vinyl Background	7770
Chromakey Green Vinyl Background	7781

Chromakey Collapsible Reversibles

Chromakey has been used in film and cinema production as a tool to mix two or more images together in all aspects of the art. It is increasingly used in digital photography to cut and paste a subject onto a background.



Features

- ▶ Reversible
- ▶ Chromakey rim tape as standard
- ▶ Crease resistant fabric
- ▶ Fast to set up and dismantle
- ▶ For inside and outside use
- ▶ Collapses to a third of its original size
- ▶ Certified fire proof fabric

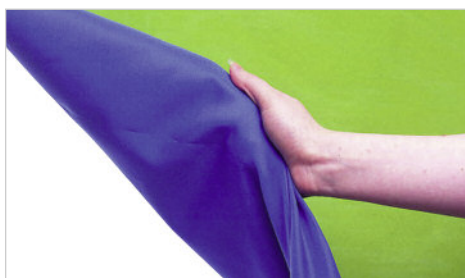
Specifications

Chromakey Collapsible Background	Size	Code
Chromakey Blue/ Green Reversible	150cm x 180cm (5' x 6')	5687
	180cm x 210cm (6' x 7')	5987
Black/White Reversible	150cm x 180cm (5' x 6')	5621
	180cm x 215cm (6' x 7')	5921
	180cm x 275cm (6' x 9')	6921
Green Chromakey	180cm x 210cm (6' x 7')	5981
	180cm x 275cm (6' x 9')	6981
Blue Chromakey	180cm x 210cm (6' x 7')	5988
	180cm x 275cm (6' x 9')	6988



Chromakey Curtain / Muslin Backgrounds

Lastolite's Chromakey Curtains are available in two sizes, 3m x 3.5m (10' x 12') and 3m x 7m (10' x 24'). Choose from Blue, Green or reversible Blue/Green versions. For most effective use, mount with Lastolite's background support system (see page 38).



Specifications

Chromakey Curtains	Size	Code
Green	3 x 3.5m (10' x 12')	5781
	3 x 7m (10' x 24')	5881
Blue	3 x 3.5m (10' x 12')	5788
	3 x 7m (10' x 24')	5888
Reversible Blue / Green	3 x 3.5m (10' x 12')	5787
	3 x 7m (10' x 24')	5887

Background Supports

Background Supports

There are a number of background supports systems to accommodate curtain, collapsible and roll up backgrounds.



1150



1118



1108



1109



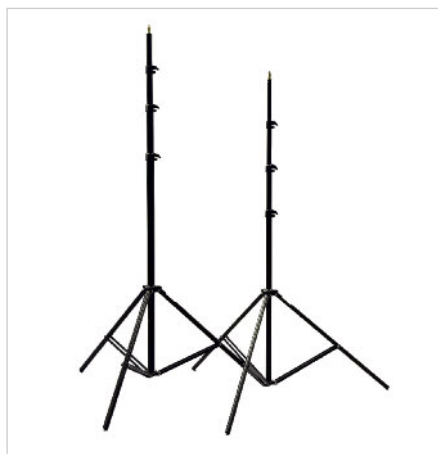
1116

Specifications

Background supports	Code
Support for 3m (10') wide curtain and roll up backgrounds (metal collars)	1108
6m (20') wide support for multiple curtains or to clip on one curtain horizontally (metal collars)	1150
Heavy duty support for paper and vinyl roll up backgrounds (metal collars)	1128
Telescopic cross bar	1119
Extension to make a 1108 support into a 1150 (metal collars)	1118
Stand for up to 1.5m x 1.8m (5' x 6') collapsible backgrounds	1109
5 piece stand for up to 1.8m x 2.1m (6' x 7') collapsible backgrounds	1116

Stands

There are a number of different lighting and support stands available.



1160 (left) 1158 (right)



1159



1153



1151



1592

Specifications

Stands	Code
4 section standard lighting stand with plastic collars - Collapsible height: 84cm, Minimum height: 99cm, Maximum height: 310cm, Spread: 120cm, Loading capacity: 2.5KG, Net Weight: 1.25Kg, Maximum loading capacity (when each section is shortened by 1 inch): 4Kg	1158
4 section air cushioned lighting stand with metal collars - Collapsible height: 84cm, Minimum height: 99cm, Maximum height: 298cm, Spread: 120cm, Loading capacity: 3KG, Net Weight: 1.33Kg, Maximum loading capacity (when each section is shortened by 1 inch): 5Kg	1159
4 section heavy duty air cushioned lighting stand with metal collars (extends from 104cm to 352cm high)	1160
Backlight base	1151
4 section backlight base adjustable riser with plastic collars (extends from 51cm to 142cm high)	1155
Backlight base and riser set	1153
Sand Bag	1592



1155

Brackets and Extending Handles



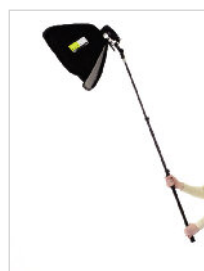
2408
Horizontal camera position



2435



2400 & 2401



2413

Specifications

Brackets and Extending Handles	Code
Camera Bracket	2408
Extending Handle (24cm - 48cm)	2400
Extending Handle (65cm - 150cm)*	2413
Extending Handle (73cm - 221cm)*	2435
Non Rotating Extending Handle (70cm - 176cm)*	2452
Non Rotating Extending Handle (74cm - 232cm)*	2453
Waist Holder for Extending Handles 2413 and 2435	2499
Small Handle (15cm) with Spigot and Hotshoe Connector	2437

*Includes Waist Holder 2499

Props

Posing Tubs



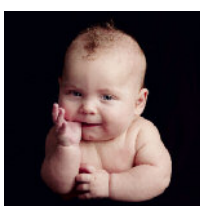
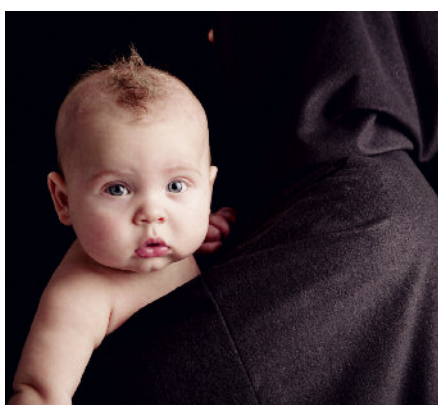
Features

- ▶ Variety of sizes
- ▶ Nestable 'Russian Doll' style for easy storage
- ▶ Hard wearing nylon covers with padded seats
- ▶ Includes a carry case with shoulder strap

Specifications

Posing Tubs	Code
Posing Tubs	8014
White removeable/washable covers for 8014	8015

Baby Posing Coat



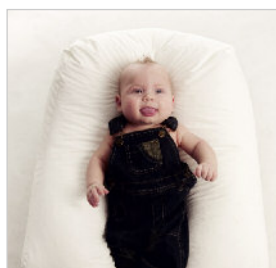
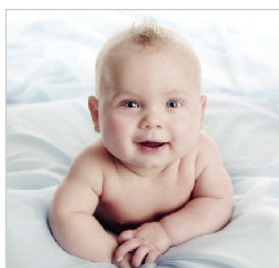
Features

- ▶ Maintains a close contact between baby and parent during the shoot
- ▶ Keeps baby safe and secure

Specifications

Baby Posing Coats	Code
Baby Posing Coat Black	8020

Baby Poser



Features

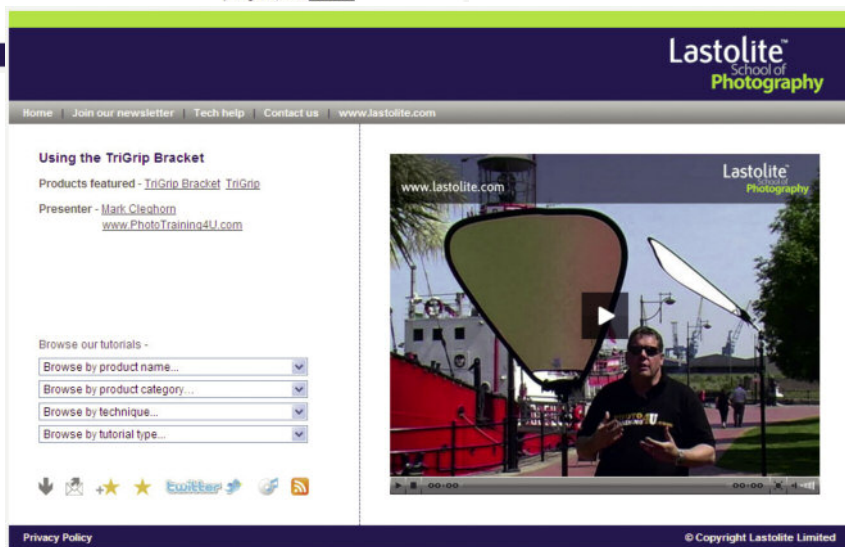
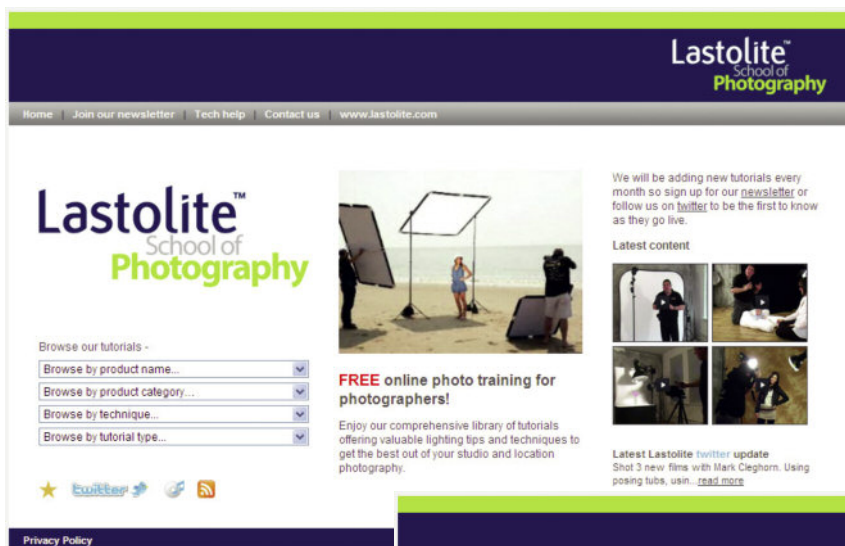
- ▶ Multi-position
- ▶ A modular system which can be constructed into a variety of shapes
- ▶ Supplied with interchangeable grey cover

Specifications

Baby Poser	Code
Baby Poser	8017

LastoliteTM School of Photography

Visit www.lastoliteschoolofphotography.com
to view our video tutorials, which show how professional
photographers use our products.



Distributor List

COUNTRY	COMPANY	TELEPHONE NUMBER	WEB SITE
Argentina	Bey Corporation SRL	011 4777 6803	www.bey.com.ar
Australia	Kayell Australia Pty Ltd	1300 529 335	www.kayellaustralia.com.au
Austria	Photon HandelsgesmbH	07272 / 75797-0	www.photon.co.at
Belgium	Servix & Partners	03 887 77 20	www.servix.be
Bulgaria	Dynaphos	02 971 9575	www.dynaphos.com
Canada	Vistek Ltd	416-365-1777	www.vistek.ca
Croatia	Prizma	01/3895 127	www.prizma-foto.hr
Cyprus	F.C Trading Co. Ltd	22670806	www.foto-cine.com
Czech Republic	Light Q	224 253 079	www.lightq.cz
Denmark	OBT ApS	3879 7562	www.obt.dk
Egypt	International Trading Transworld	275 487 02	www.hensel-egypt.com
Estonia	Profifoto OÜ	5333 8112	www.profifoto.ee
Finland	Color Kolmio OY	020 7530 359	www.colorkolmio.fi
France	MMF-Pro	01 48 91 20 66	www.mmf-pro.com
Germany	Manfrotto Distribution GmbH	02203 93960	www.manfrottodistribution.de
Greece	H. Alexandrou & Co.	21 0723 6847	www.lastolite.gr
Hong Kong	Shriro (H.K) Ltd	2524 5031	www.shriro.com.hk
Hungary	Studio Line Fototech Nika	1 222-4200	www.nika.hu
Iceland	Beco	533 3411	www.beco.is
India	Shashi Enterprises	11 2613 6872	www.shashienterprises.com
Iraq	Future Art Co Broadcasting Trading Ltd	1 8188959	www.fa-bt.com
Ireland	DML	01 465 8600	www.dml.ie
Israel	A.B.S. Altman Broadcast Services	03-7682000	www.abspphoto.co.il
Italy	Manfrotto Distribution	0424 555554	www.manfrottodistribution.it
Japan	Manfrotto Distribution KK	03-3405-6521	www.manfrottodistribution.jp
Jordan	Ibrahim Ishaq Safadi & Partner	06 5678211	www.camerahouse-jo.com
Korea (south)	Mijoorico-Alp Inc.	02 1566 4747	www.alp.co.kr
Kuwait	Ashraf & Co. Ltd	01 805151	www.ashraf.com
Latvia	SIA Master Foto Ltd	29490777	www.masterfoto.lv
Lebanon	Gulbenk Corporation	04-723777	
Lithuania	UAB Sergita	5 270 9999	www.sergita.lt
Luxembourg	Lecuit Opto-Technical S.A.	49 56 07-1	www.lecuit.lu
Malaysia	Shriro (M) Sdn Bhd	03 7874 9842	www.shriro.com.my
Malta	The Foto Grafer	21 661380	www.thefotografer.net
Mexico	Foto Regis	5550615100	www.fotoregis.com
Netherlands	Transcontinenta BV	0252-687 555	www.transcontinenta.nl
New Zealand	Apix Photographic Supplies	09-307 3177	www.apix.co.nz
Norway	Bresson AS	99 50 13 50	www.bresson.no
Peru	Wilhelmi Monge SRL	241 4493	www.wmfoto.com
Poland	Dicam	22 631 48 78	www.dicam.pl
Portugal	Cromalite SL	93 436 05 61	www.cromalite.com
Romania	Imatech Trade & Imaging SRL	021-212 08 49	www.ofertefoto.ro
Russia	OOO Sivma-Phototechnika	(495) 937 9636	www.sivma-foto.ru
Saudi Arabia	National Services Company	03 8428849	
Serbia	Pro Light d.o.o.	011 2774 704	www.prolightphoto.net
Singapore	Shriro (Singapore) Pte Ltd	6472 7777	www.shriro.com.sg
Slovak Republic	Darian s.r.o.	0911 92 72 52	www.darian.sk
Slovenia	Cumulus d.o.o.	04 201 6533	www.cumulus.si
South Africa	Singer Photo	011 791 2208	www.singerphoto.co.za
Spain	Cromalite SL	93 436 05 61	www.cromalite.com
Sweden	Aifo AB	08-720 06 45	www.aifo.se
Switzerland	Profot AG	041 769 10 80	www.profot.ch
Taiwan	Cheng Seng Trading Co.,Ltd	02-8511-1311	www.chengseng.com.tw
Thailand	Shriro Marketing (Thailand) Limited	2 792-5000x3104	www.procamera.in.th
Tunisia	Digital Foto Distribution	70 731 805	
Turkey	Zoom lthalat	(212) 269 76 76	www.zoomlthalat.com
UAE	Salam Studio & Stores	04 704 8484	www.salams.com
UK	Lastolite Limited	01530 832570	www.lastolite.com
Ukraine	PROPHOTO Ltd	044 502-51-51	www.prophoto.ua
USA	Manfrotto Distribution	(201) 818-9500	www.lastolite.us

Video Dealers

Australia	DB Audio Visual Pty Ltd	03 9819 3630	www.dbav.com.au
Belgium	ES Video Facilities	016 40 40 20	www.esvideo.be
Netherlands	Vocas BV	035-6233707	www.vocas.com
Russia	DNK Corporation	495 502 9141	www.dnk.ru
Syria	Ghali Electronics	11 333 54 51	www.ghali-electronics.com

Lastolite Limited

18 Atlas Road, Hermitage Industrial Estate, Coalville, Leicestershire LE67 3FQ UK
e: sales@lastolite.com
www.lastolite.com