





G-Technology, by Hitachi, manufactures the industry's most comprehensive line of external disk storage solutions designed for professional content creation applications. Our USB, FireWire, eSATA, and Fibre Channel systems support all levels of audio/video production. G-Tech's focus on technology, quality and design has resulted in disk storage solutions with unmatched performance, reliability and style.

Performance. Style. Reliability.

www.g-technology.com

G|Index

USB 2.0	FireWire 400	FireWire 800	eSATA	mini-SAS	Fibre Channel	RAID Protected		
✓	✓	✓					G-DRIVE mini	4 - 5
✓	✓	✓	✓				G-DRIVE Q	6 - 7
✓		✓				✓	G-SAFE	8 - 9
✓	✓	✓	✓				G-RAID ₃	10 - 11
✓	✓	✓	✓			✓	G-RAID mini ₂	12 - 13
✓	✓	✓					G-DRIVE mini SSD	14 - 15
✓	✓	✓	✓			✓	G-RAID mini ₂ SSD	14 - 15
			✓			✓	G-SPEED eS	16 - 17
				✓		✓	G-SPEED eS PRO	18 - 19
				✓		✓	G-SPEED eS PRO XL	20 - 21
					✓	✓	G-SPEED FC	22 - 23



G-DRIVE mini

Ultra-Portable Storage Solutions for People on the Go!

G-DRIVE mini hard drives are the perfect storage solutions for people on the go. Weighing in at less than 9 oz., G-DRIVE mini is the ultra-portable and stylish way to travel with up to 500GB of storage space for your important documents, MP3s, digital video and digital photo files. G-DRIVE mini is bus powered, eliminating the need to carry an external AC power supply. G-DRIVE mini features a fan-less cooling system and the latest technology 5400 or 7200 RPM hard drives with 8MB of cache.



Awarded 
by MacWorld



Triple interface with FireWire 800,
FireWire 400 and USB 2.0 ports



G-DRIVE mini incorporates a unique "fan-less" cooling system designed to silently dissipate heat for superior reliability and data integrity.



To keep G-DRIVE mini safe when on the road, a protective leather carrying case is included.



MAC

PC

FW

USB

[Click here to unlock PDFKit.NET](#)

SPECIFICATIONS:

Disk Drive: 5400 or 7200 RPM

Interface: (1) FireWire 800 / (1) FireWire 400 / (1) USB 2.0

Size: (LxWxH) 4.9375" x 3.1875" x .875" (500GB - 1")
125 x 81 x 22mm (500GB - 25.4mm)

Weight: .55 lbs / .25 kg

SYSTEM REQUIREMENTS:

FireWire 800 / USB 2.0 Operation:

Mac OS X 10.3.x or higher,
Windows 2000/XP/Vista

FireWire 400 Operation:

Mac OS 9.2 or higher,
Windows 2000/XP/Vista



G-DRIVE Q

Professional Strength, Quad-Interface Storage Solutions

G-DRIVE Q quad interface external storage systems offer the ultimate in flexibility by providing FireWire 400, FireWire 800, USB 2.0 and eSATA ports all in a single unit. G-DRIVE Q is the perfect high-performance solution for storage intensive applications including audio/video editing, digital photography, MP3 libraries and high-speed data back up. The system features a fan-less cooling system and the latest technology Hitachi 7200 RPM SATA II hard drives with up to 32MB of cache.

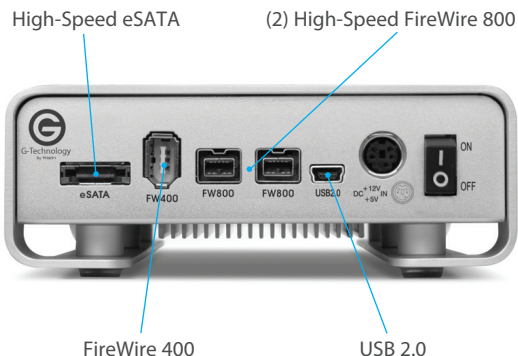


Recipient of the
MacWorld Editors' Choice Award

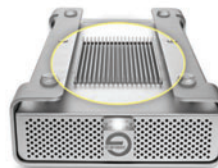
Awarded 
by MacWorld

High Performance for Demanding Applications

USB 2.0	up to 33 MB/sec
FireWire 400	up to 38 MB/sec
FireWire 800	up to 61 MB/sec
eSATA	up to 85 MB/sec



The industry's first high-performance quad interface storage system for Mac's and PC's.



G-DRIVE Q incorporates a unique "fan-less" cooling system designed to silently dissipate heat for superior reliability and data integrity.



MAC

PC

eSATA

FW

USB

Click here to unlock PDFKit.NET

SPECIFICATIONS:

Disk Drives: 7200 RPM SATA II drive with up to 32MB cache
Quad-Interface: (1) FireWire 400, (2) FireWire 800, (1) USB 2.0, (1) eSATA
Size: (LxWxH) 9.25" x 5.125" x 1.82"
235 x 130 x 46 mm
Weight: 2.6 lbs / 1.18 kg

SYSTEM REQUIREMENTS:

FireWire 400 Operation:
Mac OS 9.2 or higher,
Windows 2000/XP/Vista
FireWire 800 / USB 2.0 / eSATA Operation:
Mac OS X 10.3.x or higher,
Windows 2000/XP/Vista



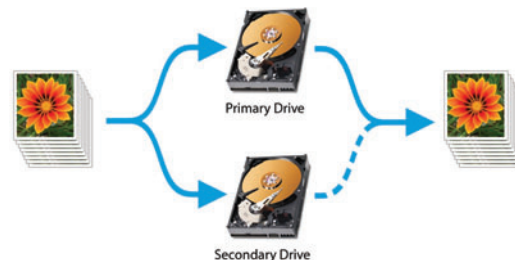
G|SAFE

RAID 1 (Mirrored) Storage Solutions for Data Security

G-SAFE is the ideal storage solution to safeguard digital files downloaded from flash memory cards. G-SAFE offers the ultimate in peace of mind by simultaneously writing to two independent hard disk drives providing instant back up of files as you save them. And unlike single drive backup systems, if a drive failure occurs your data is safe and accessible. G-SAFE features (2) removable drive modules for easy replacement of disk drives and off-site backup of data, and includes FireWire 800 and USB 2.0 ports and a front panel LCD for system status and configuration.



During operation G-SAFE writes data to (2) independent disk drives simultaneously.



If a drive failure occurs, your data is safe. G-SAFE will alert you of the failure and automatically begin reading data from the good drive. Simply replace the bad drive and G-SAFE will copy your data from the good drive to the new drive and return to protected mode.

Removable cooling fan to ensure reliable operation and data integrity

Internal AC power supply reduces cabling clutter

FireWire 800 and USB 2.0 ports for universal connectivity to Mac's or PC's



Click here to unlock PDFKit.NET

SPECIFICATIONS

Disk Drives: (2) Hot-Swappable, Hitachi 7200 RPM SATA II drives with up to 32MB cache
Controller: Hardware RAID 1
Interface: (2) FireWire 800, (1) USB 2.0
Size: (LxWxH) 4" x 4.9" x 7.6" / 102 x 127 x 193mm
Weight: 10 lbs/4.5 kg

SYSTEM REQUIREMENTS

FireWire 800 / USB 2.0 Operation:
Mac OS X 10.3.x or higher,
Windows 2000/XP/Vista



G RAID₃

Professional RAID 0 Storage Solutions with Quad Interface

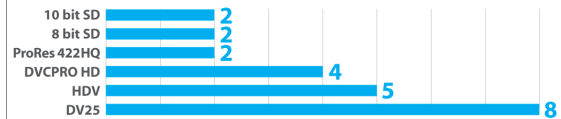
The all-new G-RAID₃ from G-Tech now features a quad interface (3 Gbit eSATA, FireWire 400/800 & USB 2.0) for universal connectivity and industry leading performance. It uses the latest generation Oxford 936 chipset and supports the simultaneous playback of multiple layers of HDV/DVCPRO HD/



ProRes 422 HQ/SD with the leading video editing applications including Final Cut Pro. G-RAID₃ is capable of delivering over 200 MB/second transfer rate when connected to any Mac or PC via eSATA. A new soft on/off electronic power switch and "smart" fan round out the new upgraded feature set.



Minimum number of real-time video streams*



*when attached via eSATA

G-RAID₃ is specifically designed to support professional multi-stream video editing applications like Apple Final Cut Pro and Adobe Premiere Pro.

G-RAID₃ is equipped with a thermo-regulated, "smart" fan to ensure quiet and reliable operation and data integrity.



New 3Gbit eSATA port for transfer speeds of over 200MB/sec!

Soft touch power switch



MAC

PC

eSATA

FW

USB

Click here to unlock PDFKit.NET

SPECIFICATIONS:

Disk Drives: (2) Hitachi 7200 RPM SATA II drives with up to 32MB cache

Controller: Hardware RAID 0 - Oxford 924

Interface: (1) FW 400, (2) FW 800 and (1) USB 2.0

Size: (LxWxH) 9.25" x 5.125" x 2.875"

235 x 130 x 73 mm

Weight: 3.85 lbs/1.75 kg

SYSTEM REQUIREMENTS:

FireWire 800 / USB 2.0 Operation:

Mac OS X 10.3.x or higher,
Windows 2000/XP/Vista

FireWire 400 Operation:

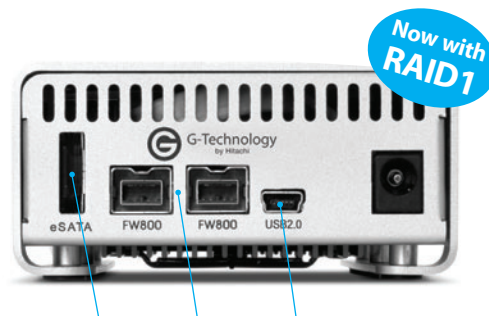
Mac OS 9.2 or higher,
Windows 2000/XP/Vista



G-RAID mini₂

Portable Storage Solutions with Quad Interface and Selectable RAID 0 / RAID 1 Operation

The all-new G-RAID mini₂ from G-Tech now features both RAID 0 and fail-safe RAID 1 operation, and a high-speed quad interface. It is the ideal portable storage solution for safe-guarding content downloaded from professional tapeless video cameras. Production houses and creative studios will appreciate its compact size and tough, all-aluminum enclosure, which make it perfect for capturing and editing on the go or while working on location. G-RAID mini₂ is capable of delivering an unprecedented 120+ MB/second transfer rate when used with eSATA in RAID 0. G-RAID mini₂ is FireWire bus-powered even when connected via eSATA



eSATA, FireWire 800 and USB 2.0 ports for universal connectivity to Mac's or PC's

G-RAID mini₂ is equipped with a small and quiet cooling fan to ensure reliable operation and data integrity.



Tapeless Workflow? Protect your content with G-RAID mini₂



Transfer content from solid state media to the G-RAID mini₂ for the ultimate data protection in the field



MAC

PC

eSATA

FW

USB

Click here to unlock PDFKit.NET

SPECIFICATIONS:

Disk Drives: (2) 5400 or 7200 RPM Hitachi SATA drives with up to 8MB cache
Controller: Hardware RAID 0/1 - Oxford 936DS
Interface: (1) eSATA, (2) FW 800 and (1) USB 2.0
Size: (LxWxH) 5.9" x 3.25" x 1.5" / 149 x 82.6 x 38 mm
Weight: 1.1 lbs/.5 kg

SYSTEM REQUIREMENTS:

eSATA / FireWire 800 / USB 2.0 Operation:
Mac OS X 10.3.x or higher,
Windows 2000/XP/Vista
FireWire 400 Operation:
Mac OS 9.2 or higher,
Windows 2000/XP/Vista



cutouts are for
illustration purposes only

G RAID mini₂ SSD

Solid State RAID for Extreme Performance and Protection

From blazing speed to rock-solid durability and data protection, nothing comes close to the new, two-drive, G-RAID mini₂ SSD. Featuring a quad interface (eSATA, FireWire 400, FireWire 800 and USB 2.0), G-RAID mini₂ SSD delivers over 200MB/sec data transfer rates when configured in RAID 0 mode. The system will support the playback of six simultaneous ProRes 422 HQ streams and a single stream of uncompressed HD when attached via eSATA. A simple user interface easily configures the unit to RAID 1 data mirroring for professional shooters using cameras such as the RED ONE, Panasonic P2 and Sony SxS who want to offload their footage to a redundant SSD-based system. The G-RAID mini₂ SSD comes in 256GB or 512GB, with the latter holding over 5.5 hours of ProRes 422 footage! Perfect for the road, it is light, compact and FireWire bus-powered.



Solid State Drives use high-performance Flash Memory and have no moving parts

The SSD Advantage

High-Performance – Faster than a standard HDD

Faster seek time – .2ms vs 12ms for a HDD, perfect for multi-stream editing

Low power – cooler operation

Silent operation – perfect for audio editing

No moving parts – very reliable, can withstand 1500G shock

G DRIVE mini SSD

Rugged Solid State Drives for Demanding Applications

Extremely durable and compact, the new G-DRIVE mini SSD comes in 128GB and 256GB capacities, and features a triple interface (FireWire 400, FireWire 800 and USB 2.0) to provide fast access to HD video, audio, and other dense multimedia files. Data rates top 60MB/sec write and 75MB/sec read speeds when using FireWire 800. Weighing in at just 8.5 oz, G-DRIVE mini SSD can be literally thrown into a gear bag for “grab n’ go” ease. No external AC power supply is required as it is USB or FireWire bus-powered.



MAC

PC

eSATA

FW

USB

[Click here to unlock PDFKit.NET](#)

SPECIFICATIONS (G-RAID mini₂ SSD):
 Disk Drives: (2) Solid State Drives (SSD)
 Controller: Oxford 936
 Interface: eSATA/FW400/FW800/USB 2.0
 Size: (LxWxH) 5.9" x 3.25" x 1.5" / 149 x 82.6 x 38 mm
 Weight: 1.1 lbs / .5 kg

SPECIFICATIONS (G-DRIVE mini SSD):
 Disk Drives: Solid State Drive (SSD)
 Controller: Oxford 924
 Interface: FW400/FW800/USB 2.0
 Size: (LxWxH) 4.9375" x 3.1875" x .875" / 125 x 81 x 22mm
 Weight: .55 lbs / .25 kg

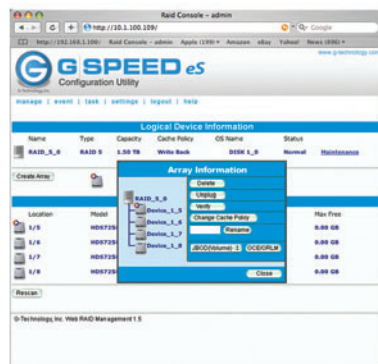
SYSTEM REQUIREMENTS:
 eSATA/FireWire 800 / USB 2.0 Operation:
 Mac OS X 10.3.x or higher, Windows 2000/XP/Vista
 FireWire 400 Operation:
 Mac OS 9.2 or higher, Windows 2000/XP/Vista



G-SPEED^{eS}

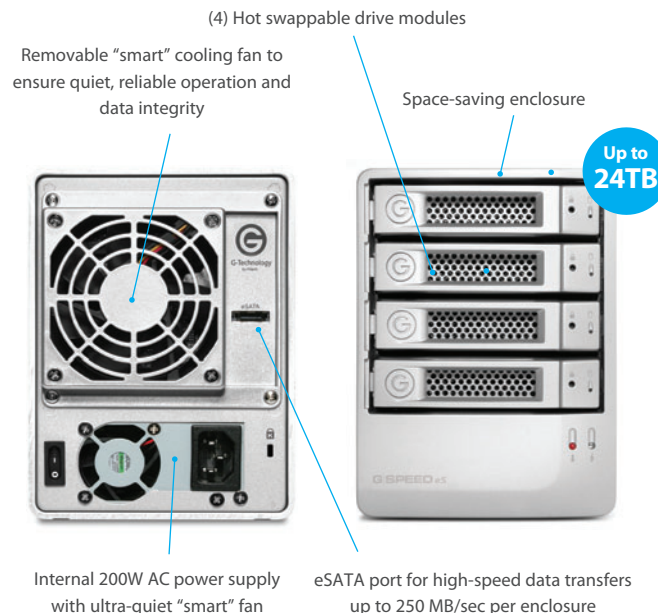
Cost-Effective eSATA RAID Storage for SD/HD Production

G-SPEED^{eS} from provides professional content creators with outstanding performance, high storage capacity and optional fail-safe operation at an unprecedented low cost per gigabyte. The compact G-SPEED^{eS} sports a 3Gbit eSATA interface and features Hitachi 7200 RPM, SATA II hard drives. When used with the optional G-Tech RAID controller, a single G-SPEED^{eS} in performance mode (RAID 0) easily supports uncompressed 8-bit, 1080/60i HD video capture and playback. Two G-SPEED^{eS} units in fail-safe mode (RAID 5) support 10-bit, 1080i and more! As many as four G-SPEED^{eS} enclosures can be attached to a single workstation to support up to 24TB of



G-SPEED^{eS} is configured and monitored through a web based GUI

storage with speeds in excess of 600MB/sec! Storage for multi-stream uncompressed SD and HD production has never been easier or more affordable!



The optional 4-port eSATA PCIe x4 RAID controller supports RAID 0,1,5 and JBOD configurations. Up to (4) G-SPEED^{eS} enclosures can be attached to each workstation for performance well over 600 MB/sec! G-SPEED^{eS} can also be attached to third-party port multiplier aware host bus adapters.



Click here to unlock PDFKit.NET

SPECIFICATIONS

Disk Drives: (4) Hot-swappable, Hitachi 7200 RPM SATA II drives with up to 32MB cache
Interface: (1) eSATA
Optional Controller: 4 port eSATA PCIe supporting RAID 0,1,5, JBOD
Size: (LxWxH) 8.25" x 4.9" x 6.5" / 210 x 124 x 166 mm
Weight: 12.5 lbs / 5.7 kg

SYSTEM REQUIREMENTS

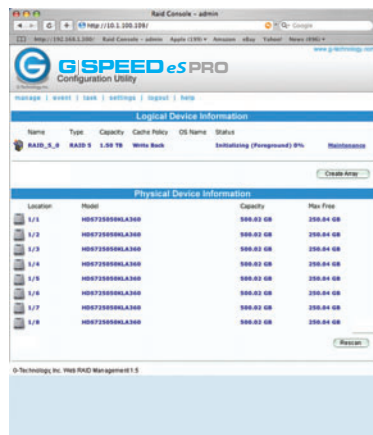
G-Tech RAID Controller: Mac Pro (Intel processor) or PC with available PCIe x4 slot, Mac OS X 10.3.x or higher, Windows 2000/XP/Vista. G-SPEED^{eS} is compatible with port multiplier aware adapter cards



G SPEED^{eS} PRO

High-Performance, Fail-Safe RAID Solutions for HD/2K Production

The new G-SPEED^{eS} PRO from G-Tech provides professional content creators better than Fibre-Channel performance for demanding post production applications at a fraction of the cost. The compact and whisper quiet G-SPEED^{eS} PRO features mini-SAS connectivity to a high performance PCIe x8 RAID controller that supports RAID levels 0, 1, 3, 5 and RAID 6. A single G-SPEED^{eS} PRO enclosure with four 7200 RPM drives in RAID 0 mode supports multi-stream ProRes 422 HQ playback and a single-stream of



G-SPEED^{eS} PRO is configured and monitored through a web based GUI

uncompressed 10-bit HD. Two units in protected mode (RAID 5) support two simultaneous streams of uncompressed 10-bit HD or a single 2K DPX sequence. G-SPEED^{eS} PRO is simply the most cost-effective desktop RAID storage solution designed specifically for high-end post.



(4) Hot swappable drive modules

Removable "smart" cooling fan to ensure quiet, reliable operation and data integrity

Space-saving enclosure

Up to 12TB



Internal 200W AC power supply with ultra-quiet "smart" fan



mini-SAS port for high-speed data transfers



The new G-Tech PCIe x8 RAID controller supports RAID levels 0, 1, 3, 5 and RAID 6 configurations. Two G-SPEED^{eS} Pro enclosures can be attached to the RAID controller for up to 12TB of storage capacity and performance over 800 MB/sec!



MAC

PC

mini-SAS

SD

HD

2K

Click here to unlock PDFKit.NET

SPECIFICATIONS

Disk Drives: (4) Hot-swappable, Hitachi 7200 RPM SATA II drives with up to 32MB cache
Interface: (1) PCIe x8 mini-SAS
RAID Controller: 2-port PCIe x8 IOP with 512MB RAM and support for RAID levels 0, 1, 3, 5 & 6
Size: (LxWxH) 8.25" x 4.9" x 6.5" / 210 x 124 x 166 mm
Weight: 12.5 lbs / 5.7 kg

SYSTEM REQUIREMENTS

G-Tech RAID Controller:
Mac Pro (Intel processor) or PC with available PCIe x8 slot, Mac OS X 10.3.x or higher, Windows 2000/XP/Vista.



G | SPEED_{eS} PRO XL

High-Performance, Expandable Fail-Safe RAID Solutions for uncompressed HD and 2K Production

The new G-SPEED_{eS} PRO XL from G-Tech is a cost-effective, expandable storage solution designed for content creation professionals working with multi-stream uncompressed HD and 2K workflows, and digital intermediate (DI) film applications. G-SPEED_{eS} PRO XL easily expands by simply daisy-chaining 12- or 16-bay enclosures using locking mini-SAS cables. A total of (8) enclosures can be connected to the system for up to 192TB of incredibly fast online storage! It features the same IOP RAID controller used in the G-SPEED_{eS} PRO system with (2) 12Gbit mini-SAS ports and performance over 800 MB/sec. A single 12-bay G-SPEED_{eS} PRO XL can support real-time multi-stream 10-bit 1080/60i and 2K DPX video files. Adding high-performance storage has never been so simple - or cost effective.



The new G-Tech PCIe x8 IOP RAID controller supports RAID levels 0,1,3,5,6, and features (2) 12Gbit mini-SAS ports.



The G-SPEED_{eS} PRO XL is easily expandable up to 192TB by simply daisy-chaining units using locking mini-SAS cables.

Adding high-performance storage has never been so simple - or cost effective.



MAC

PC

mini-SAS

SD

HD

2K

[Click here to unlock PDFKit.NET](#)

SPECIFICATIONS:

Disk Drives: (12 or 16) Hot-swappable, Hitachi 7200 RPM SATA II drives with up to 32MB cache
Interface: 12Gbit mini-SAS, expandable
Size: (LxWxH) 19.5" x 19" x 5.25"/495x483x133mm
Weight: 73 lbs/33 kg
RAID Controller: 2-port PCIe x8 IOP with 512MB RAM and support for RAID levels 0,1,3,5 & 6

SYSTEM REQUIREMENTS:

G-Tech RAID Controller:
Mac Pro (Intel processor) or PC with available PCIe x8 slot, Mac OS X 10.3.x or higher, Windows 2000/XP/Vista.



G-SPEED FC

High-Performance, SAN-Ready Storage Solutions for SD and HD

G-SPEED FC is the perfect solution for multi-stream, multi-user SD and uncompressed HD work flows - including real-time playback of 2K DPX sequences. G-SPEED FC features 4Gbit Fibre Channel connectivity and is available in a compact desktop enclosure with 6 drives (G-SPEED FC) and dual channel, 2U or 3U rackmount enclosures (G-SPEED FC XL12/XL16) with 12 or 16 drives.



G-SPEED FC's built-in RAID controller can be configured as RAID 0, 1, 3, 5 or 6 via the front LCD panel or the easy to use web GUI. G-SPEED FC is "SAN Ready" and is an affordable and simple



way to deploy a fail-safe SAN or add additional high performance RAID storage to existing XSan2, FibreJet or metaSAN networks. G-SPEED FC was designed to support the latest and greatest professional video editing equipment from AJA, Avid, Blackmagic Design, Matrox and more.



G-SPEED can be configured and monitored via the system's front panel LCD.

G-SPEED features hot-swappable 7200 RPM, SATA II disk drive modules with up to 32MB of cache.



SAN READY!

G-SPEED XL12/16 feature dual channel 4Gbit connectivity and utilize SFP to LC optical transceivers. The system connects to your workstation or network using thin optical cabling.



Ethernet Port

Dual, redundant 460W power supplies

Now up to 24TB!



MAC PC mini-SAS

SD HD 2K

Click here to unlock PDFKit.NET

SPECIFICATIONS (G-SPEED):

Disk Drives: (6) Hot-swappable, Hitachi 7200 RPM SATA II drives with up to 32MB cache
Controller: Hardware RAID 0, 1, 3, 5, 6 and JBOD Interface: 4Gbit Fibre Channel, SFP to LC Size: (LxWxH) 11.3" x 6.5" x 13.6"/235 x 130 x 73mm Weight: 35 lbs/16 kg

SPECIFICATIONS (G-SPEED XL12/16):

Disk Drives: (12 or 16) Hot-swappable, Hitachi 7200 RPM SATA II drives with up to 32MB cache
Controller: Hardware RAID 0, 1, 3, 5, 6 and JBOD Interface: Dual 4Gbit Fibre Channel, SFP to LC Size: (LxWxH) 17.5" x 19.5" x 5.25"/446x495x133mm Weight: 73 lbs/33 kg

SYSTEM REQUIREMENTS:

Fibre Channel equipped computer or switch, Ethernet port and Web Browser for GUI connection



G-Technology
by Hitachi

Performance. Style. Reliability.